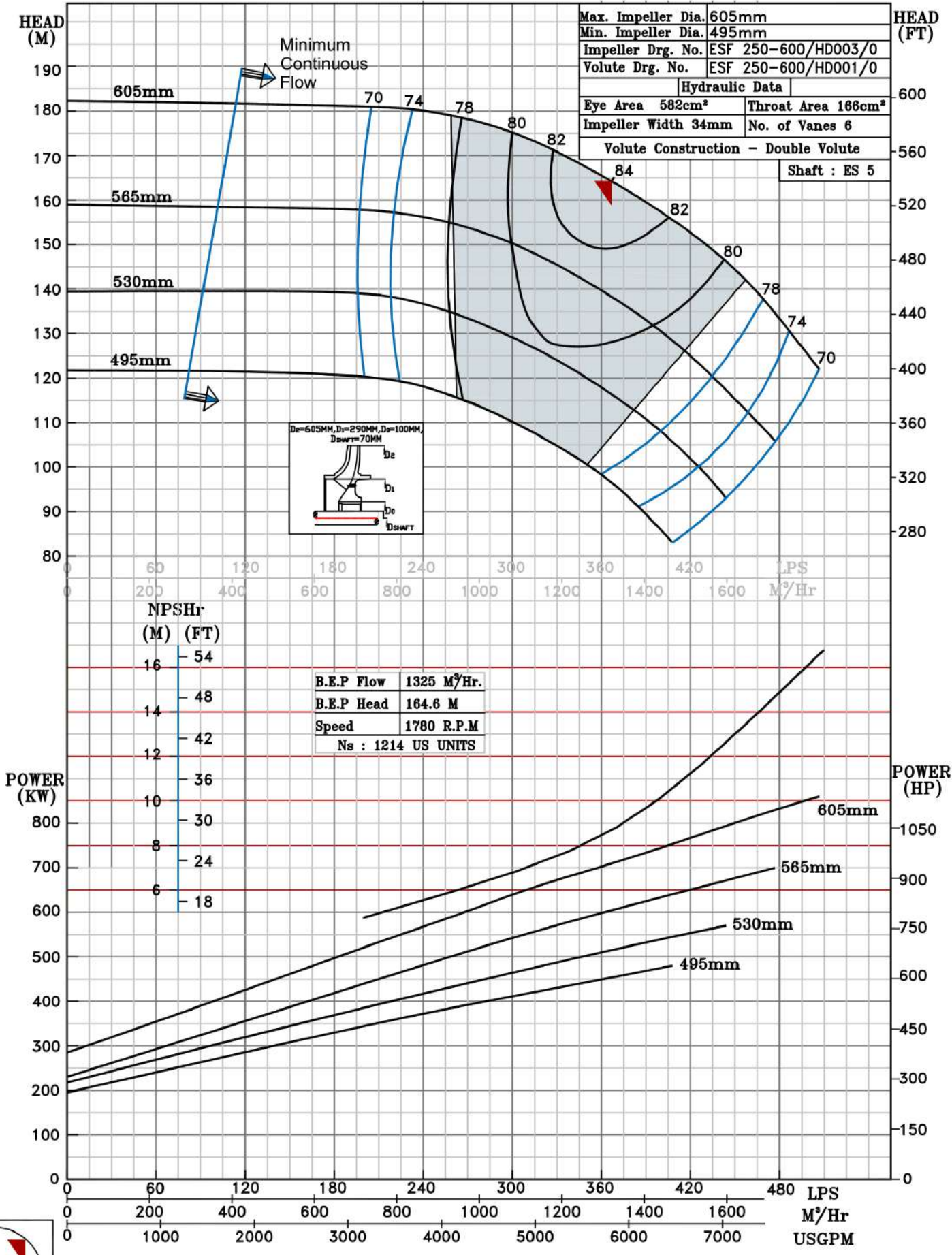


NOTE- PERFORMANCE AS PER ISO 9906 GRADE-2B

<b>PERFORMANCE CURVE OF ESF 250-600 @1780 R.P.M</b>		ESF 250-600/Y/501864	
<b>FISHER PUMP</b>	<b>MODEL ESF 250-600</b>	WORKING PRESS.	20 bar
	SIZE 350x250-605	TEST PRESS.	30 bar
<b>ESF RANGE</b>	TYPE - END SUCTION BACK PULL OUT		
			SPEED 1780 rpm

SHADED REGION ON THE H-Q CURVE REPRESENTS OPTIMUM SELECTION ZONE

PUMP PERFORMANCE CHARACTERISTICS COMPUTED BASED ON CLEAN COLD WATER S.G 1.0



1780 RPM