

NOTE- PERFORMANCE AS PER ISO 9906 GRADE-2B

PERFORMANCE CURVE OF ESF 200-500 @1780 R.P.M

ESF 200-500/X/500964

FISHER PUMP

ESF RANGE

MODEL ESF 200-500

WORKING PRESS. 16 bar

SIZE 250x200-515

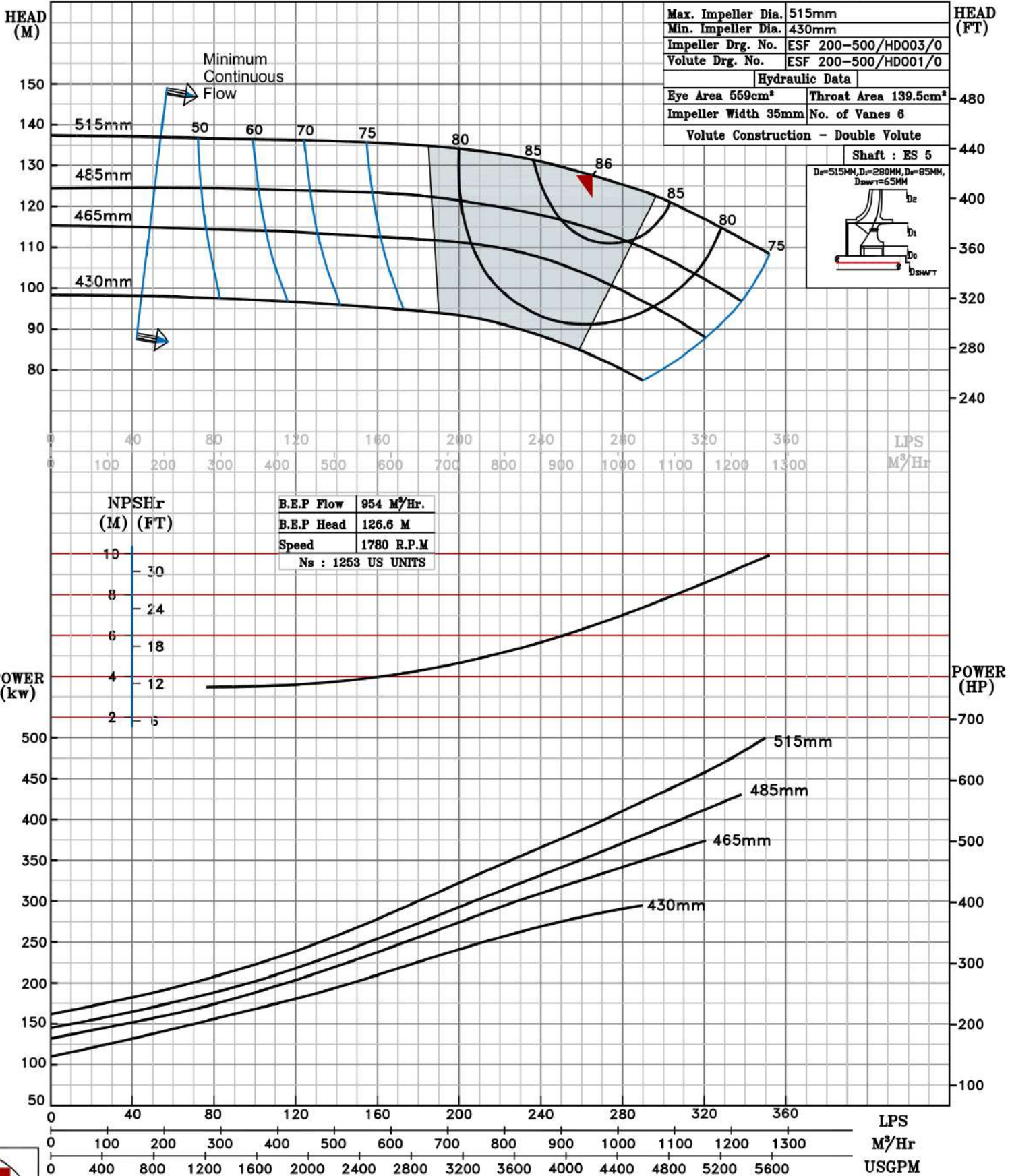
TEST PRESS. 24 bar

TYPE - END SUCTION BACK PULL OUT

SPEED 1780 rpm

SHADED REGION ON THE H-Q CURVE REPRESENTS OPTIMUM SELECTION ZONE

PUMP PERFORMANCE CHARACTERISTICS COMPUTED BASED ON CLEAN COLD WATER S.G 1.0



1780 RPM