

NOTE- PERFORMANCE AS PER ISO 9906 GRADE-2B

PERFORMANCE CURVE OF ESF 300-575 @1780 R.P.M

ESF 300-575/X/503564

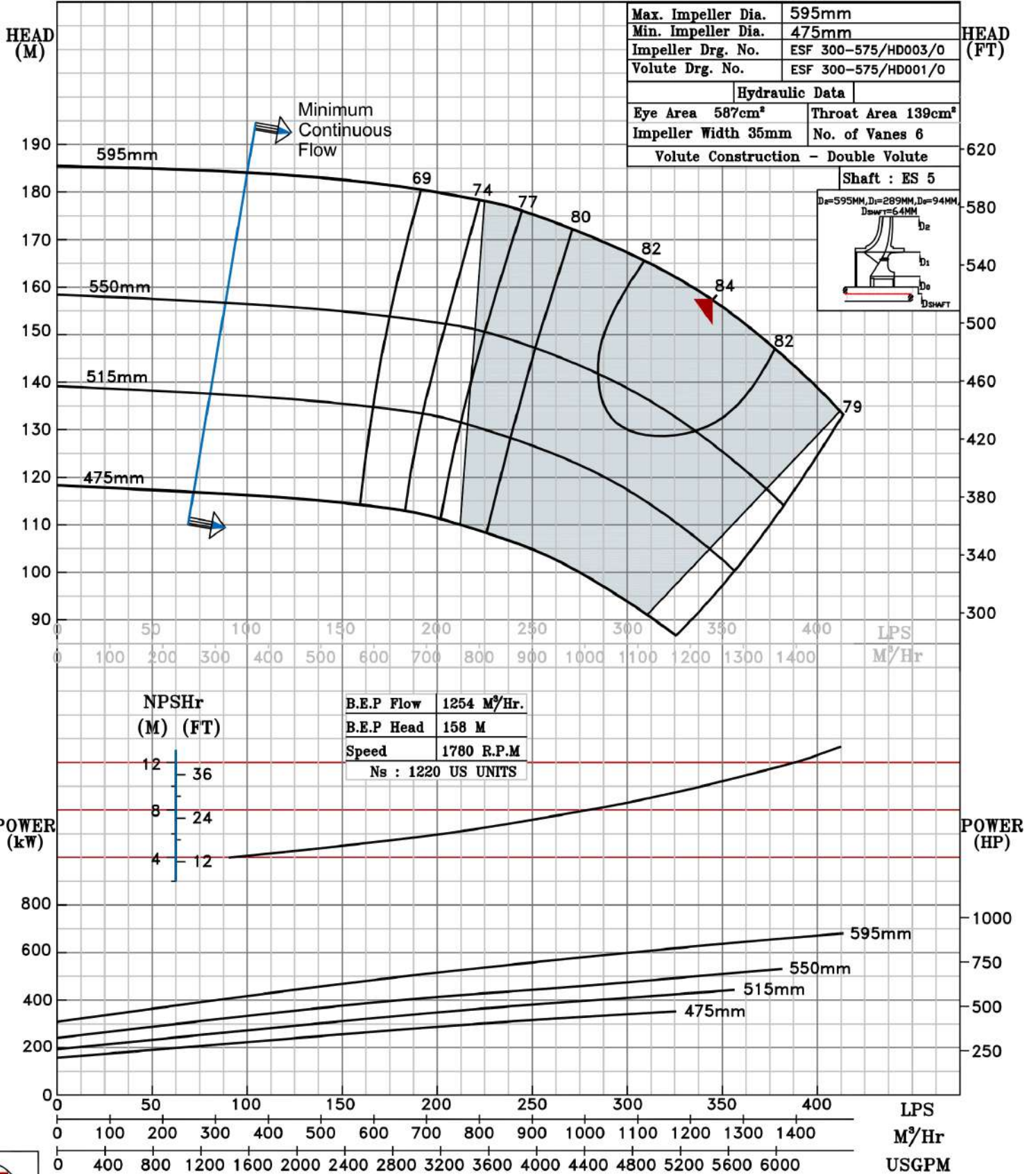
FISHER PUMP

ESF RANGE

MODEL	ESF 300-575	WORKING PRESS.	20 bar
SIZE	350x300-595	TEST PRESS.	30 bar
TYPE-END SUCTION BACK PULL-OUT		SPEED 1780 rpm	

SHADED REGION ON THE H-Q CURVE REPRESENTS OPTIMUM SELECTION ZONE

PUMP PERFORMANCE CHARACTERISTICS COMPUTED BASED ON CLEAN COLD WATER S.G 1.0



1780 RPM