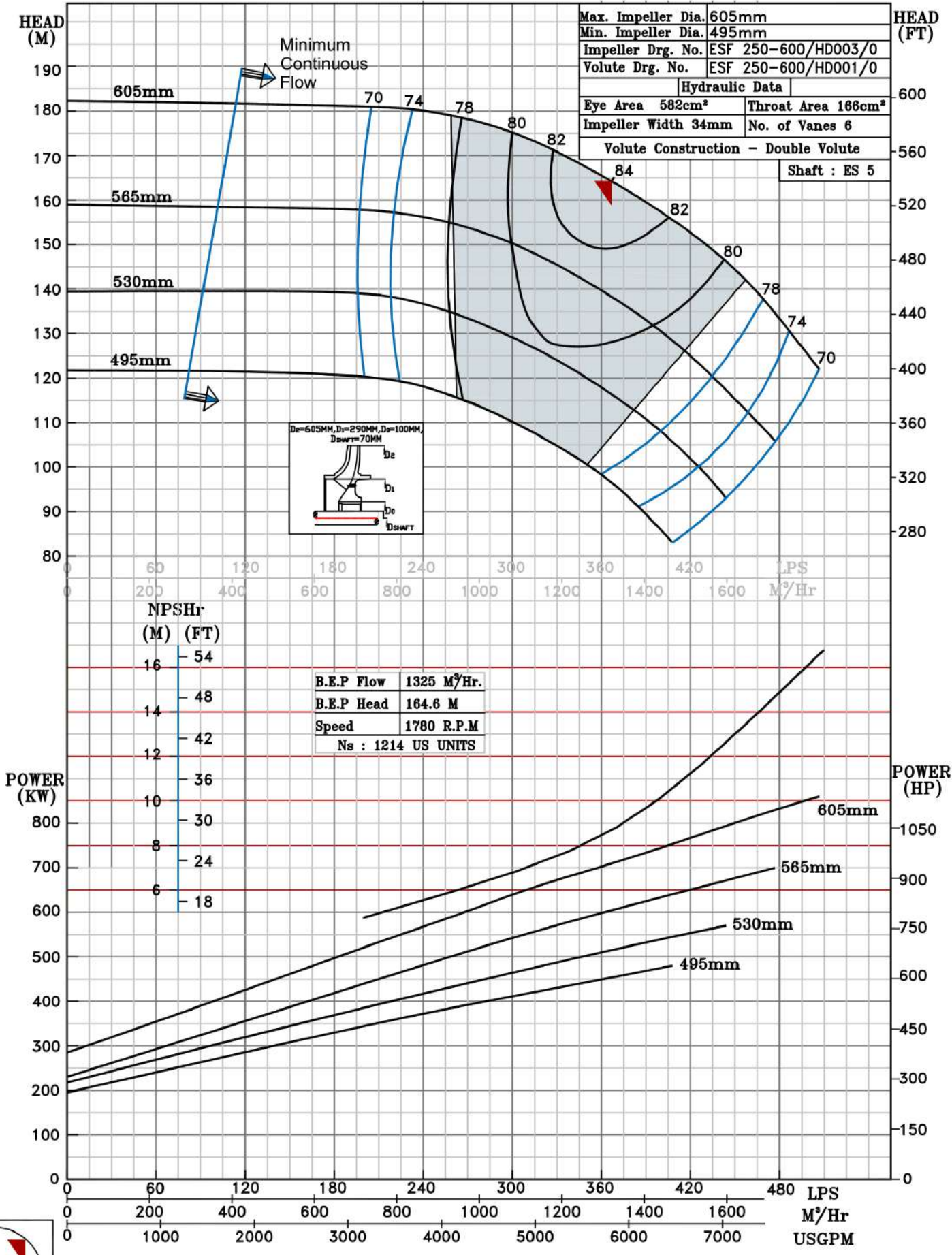


NOTE- PERFORMANCE AS PER ISO 9906 GRADE-2B

PERFORMANCE CURVE OF ESF 250-600 @1780 R.P.M		ESF 250-600/Y/501864	
FISHER PUMP	MODEL ESF 250-600	WORKING PRESS.	20 bar
	SIZE 350x250-605	TEST PRESS.	30 bar
ESF RANGE	TYPE - END SUCTION BACK PULL OUT		SPEED 1780 rpm

SHADED REGION ON THE H-Q CURVE REPRESENTS OPTIMUM SELECTION ZONE

PUMP PERFORMANCE CHARACTERISTICS COMPUTED BASED ON CLEAN COLD WATER S.G 1.0



1780 RPM