

NOTE- PERFORMANCE AS PER ISO 9906 GRADE-2B

PERFORMANCE CURVE OF 80MA @1760 R.P.M

80MA/X/200664

**FISHER PUMP**

CSC RANGE

MODEL 80MA

WORKING PRESS. 12 bar

SIZE 100x80-345

TEST PRESS. 18 bar

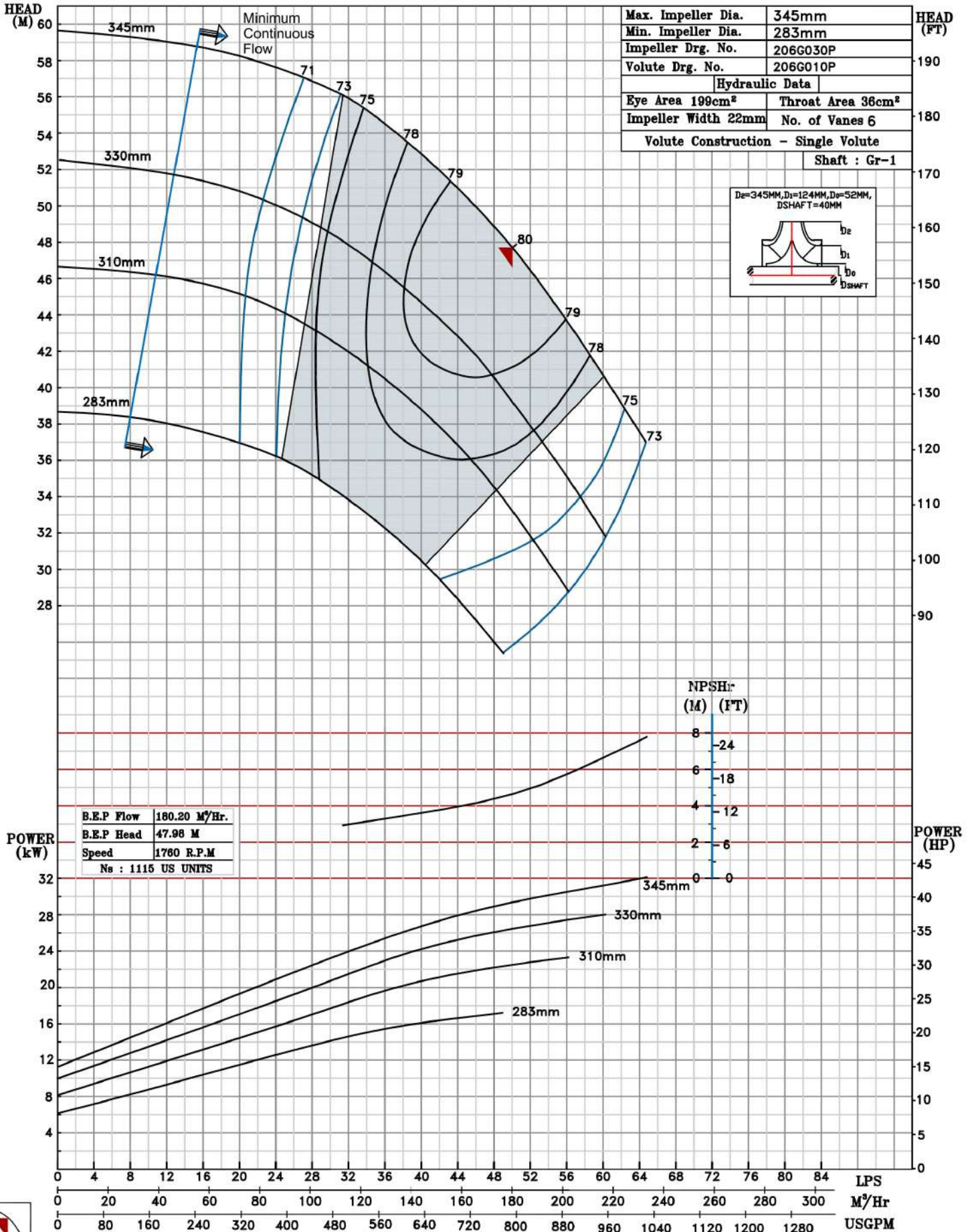
TYPE-AXIALLY SPLIT CASE SINGLE STAGE

SPEED 1760 rpm

DATE - 10.08.14

SHADED REGION ON THE H-Q CURVE REPRESENTS OPTIMUM SELECTION ZONE

PUMP PERFORMANCE CHARACTERISTICS COMPUTED BASED ON CLEAN COLD WATER S.G 1.0



1760 RPM