

NOTE- PERFORMANCE AS PER ISO 9906 GRADE-2B

PERFORMANCE CURVE OF 80HA @1760 R.P.M

80HA/X/200764

FISHER PUMP

CSC RANGE

MODEL 80HA

WORKING PRESS. 12 bar

SIZE 100x80-394

TEST PRESS. 18 bar

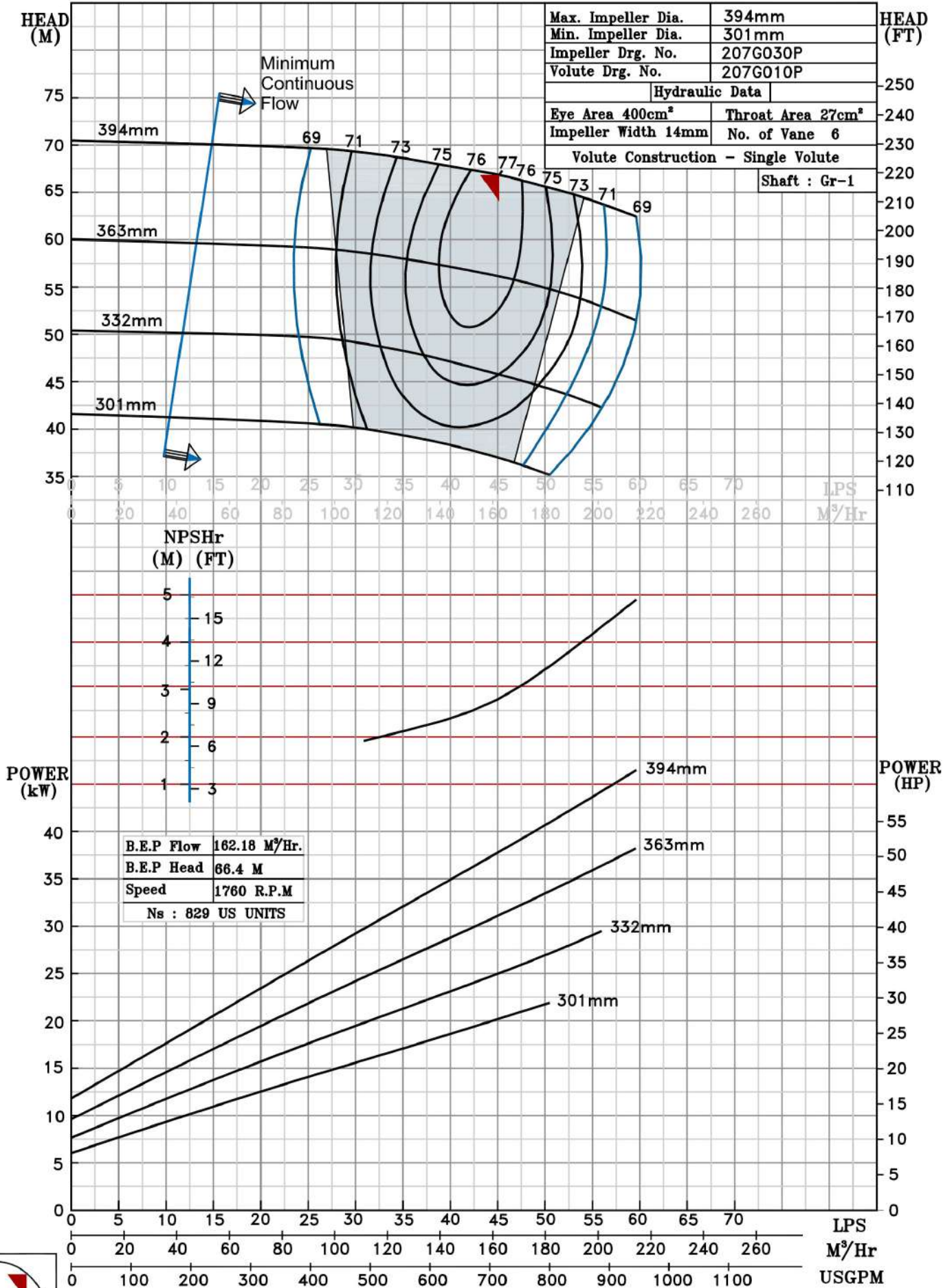
TYPE-AXIALLY SPLIT CASE SINGLE STAGE

SPEED 1760 rpm

DATE - 10.08.14

SHADED REGION ON THE H-Q CURVE REPRESENTS OPTIMUM SELECTION ZONE

PUMP PERFORMANCE CHARACTERISTICS COMPUTED BASED ON CLEAN COLD WATER S.G 1.0



1760 RPM