

NOTE- PERFORMANCE AS PER ISO 9906 GRADE-2B

PERFORMANCE CURVE OF 65LA @1760 R.P.M

65LA/X/200364

FISHER PUMP

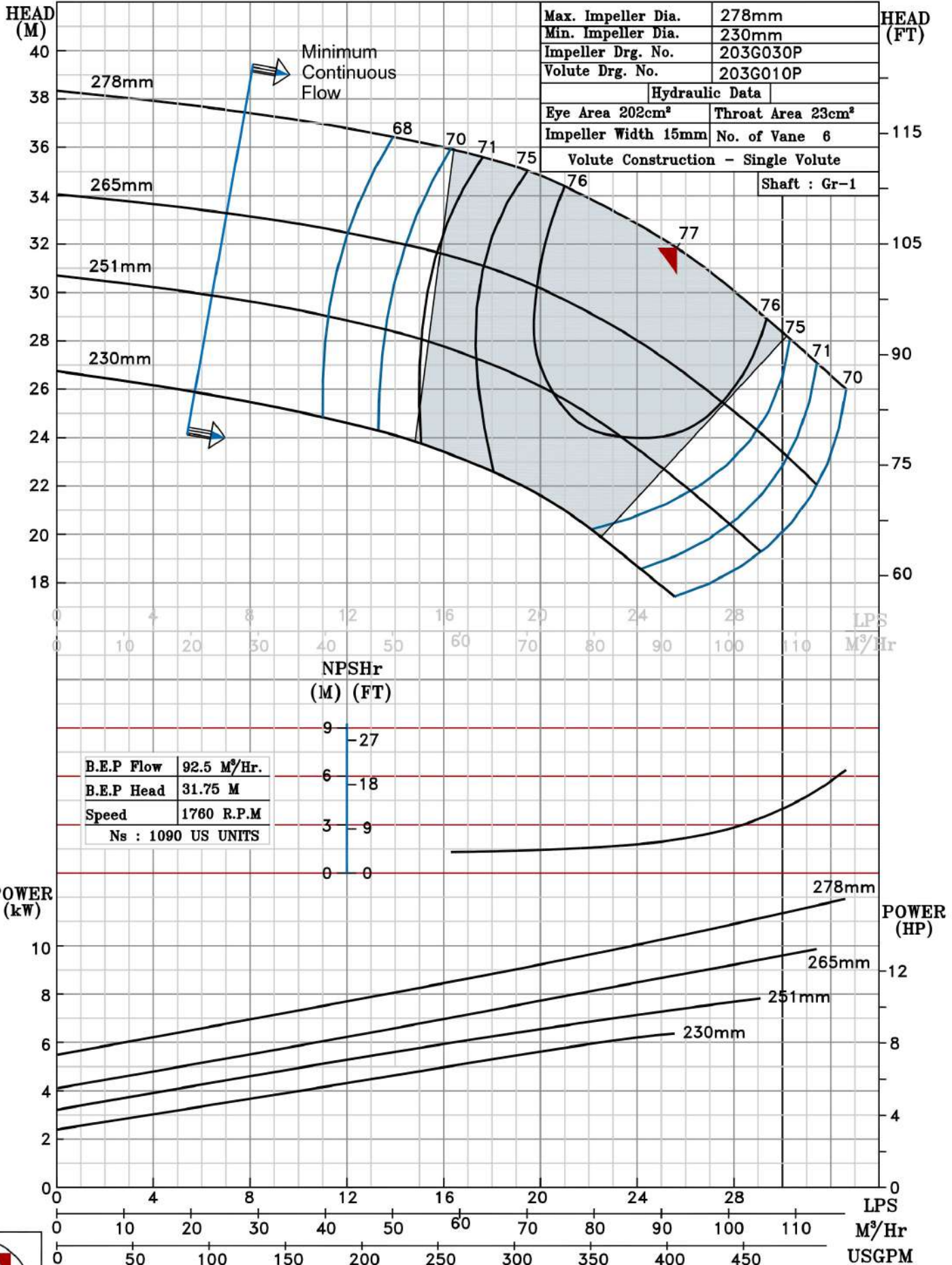
CSC RANGE

MODEL 65LA	WORKING PRESS. 12 bar
SIZE 80x65-278	TEST PRESS. 18 bar
TYPE-AXIALLY SPLIT CASE SINGLE STAGE	
SPEED 1760 rpm	
DATE - 10.08.14	

SHADED REGION ON THE H-Q CURVE REPRESENTS OPTIMUM SELECTION ZONE

PUMP PERFORMANCE CHARACTERISTICS COMPUTED BASED ON CLEAN COLD WATER S.G 1.0

Max. Impeller Dia.	278mm
Min. Impeller Dia.	230mm
Impeller Drg. No.	203G030P
Volute Drg. No.	203G010P
Hydraulic Data	
Eye Area 202cm ²	Throat Area 23cm ²
Impeller Width 15mm	No. of Vane 6
Volute Construction - Single Volute	
Shaft : Gr-1	



B.E.P Flow	92.5 M ³ /Hr.
B.E.P Head	31.75 M
Speed	1760 R.P.M
Ns : 1090 US UNITS	



1760 RPM