

NOTE- PERFORMANCE AS PER ISO 9906 GRADE-2B

PERFORMANCE CURVE OF 50MA @1760 R.P.M

50MA/X/200264

**FISHER PUMP**

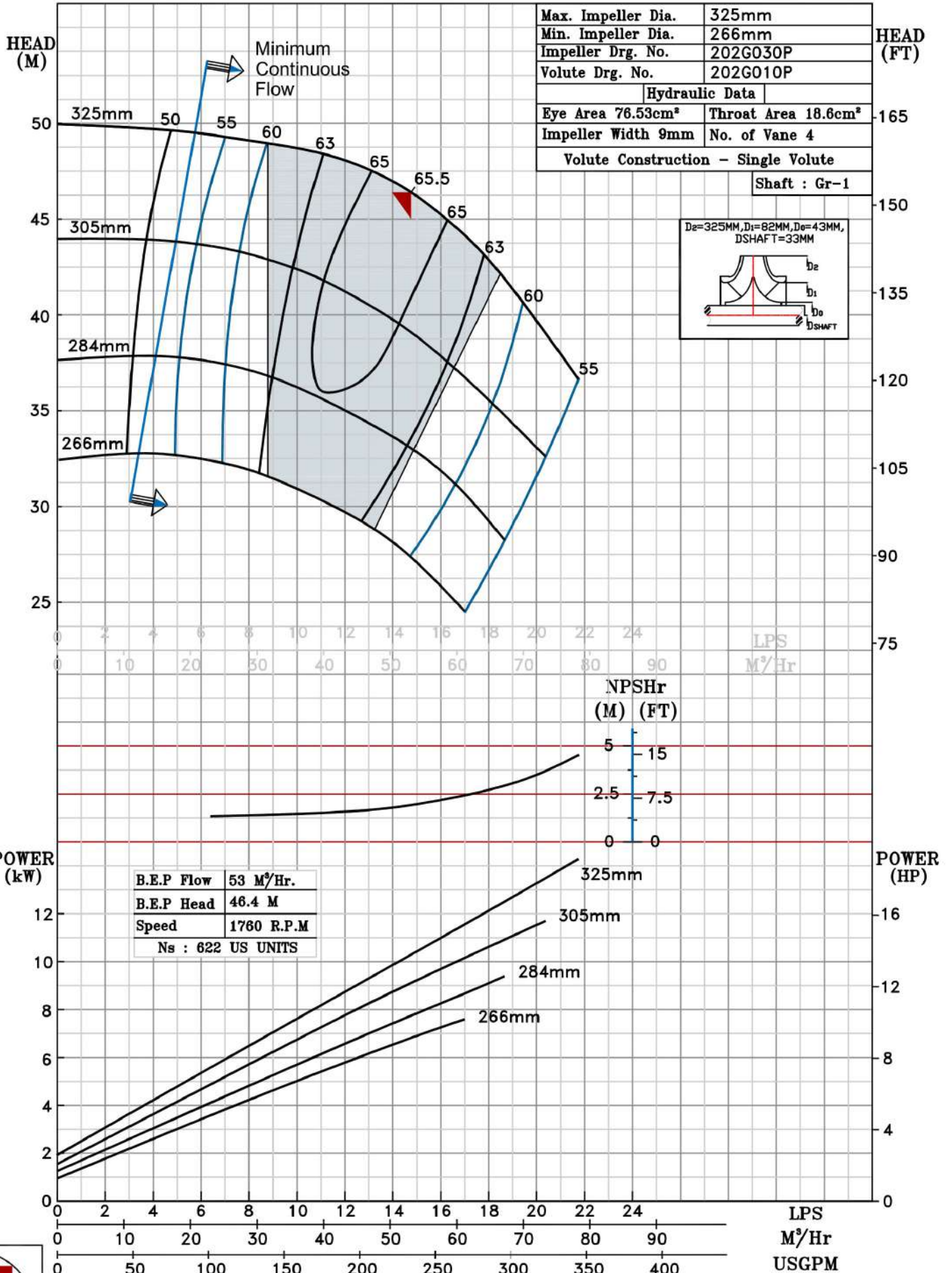
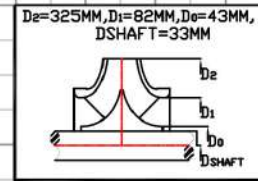
CSC RANGE

MODEL 50MA	WORKING PRESS	12 bar
SIZE 80x50-325	TEST PRESS.	18 bar
TYPE-AXIALLY SPLIT CASE SINGLE STAGE		SPEED 1760 rpm
		DATE - 10.08.14

SHADED REGION ON THE H-Q CURVE REPRESENTS OPTIMUM SELECTION ZONE

PUMP PERFORMANCE CHARACTERISTICS COMPUTED BASED ON CLEAN COLD WATER S.G 1.0

Max. Impeller Dia.	325mm
Min. Impeller Dia.	266mm
Impeller Drg. No.	202G030P
Volute Drg. No.	202G010P
Hydraulic Data	
Eye Area 76.53cm <sup>2</sup>	Throat Area 18.6cm <sup>2</sup>
Impeller Width 9mm	No. of Vane 4
Volute Construction - Single Volute	
Shaft : Gr-1	



1760 RPM