

NOTE- PERFORMANCE AS PER ISO 9906 GRADE-2B

PERFORMANCE CURVE OF 250MA @1780 R.P.M

250MA/X/203064

**FISHER PUMP**

CSC RANGE

MODEL 250MA

WORKING PRESS. 16 bar

SIZE 300x250-325

TEST PRESS. 24 bar

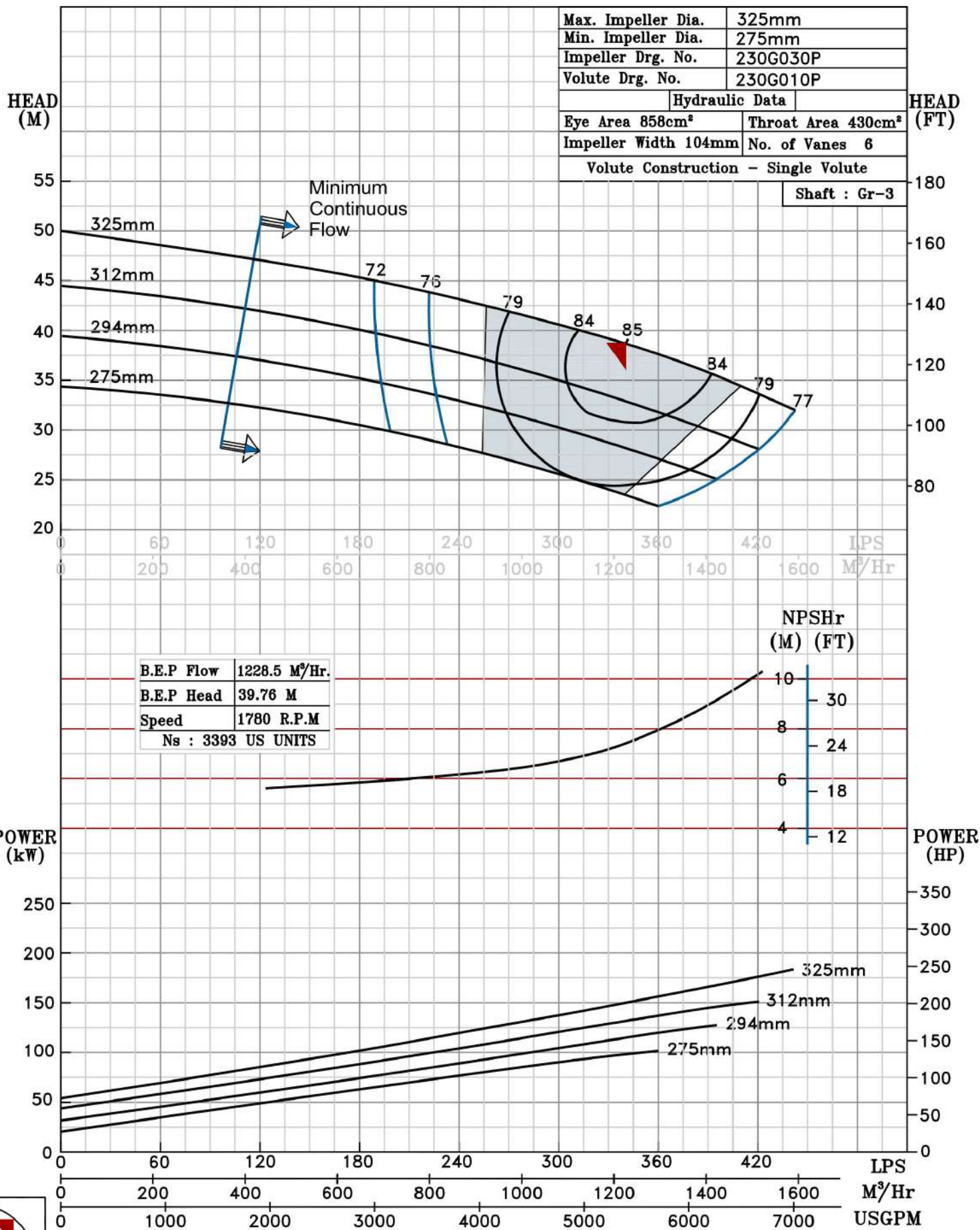
TYPE-AXIALLY SPLIT CASE SINGLE STAGE

SPEED 1780 rpm

SHADED REGION ON THE H-Q CURVE REPRESENTS OPTIMUM SELECTION ZONE

DATE - 10.08.14

PUMP PERFORMANCE CHARACTERISTICS COMPUTED BASED ON CLEAN COLD WATER S.G 1.0



1780 RPM

