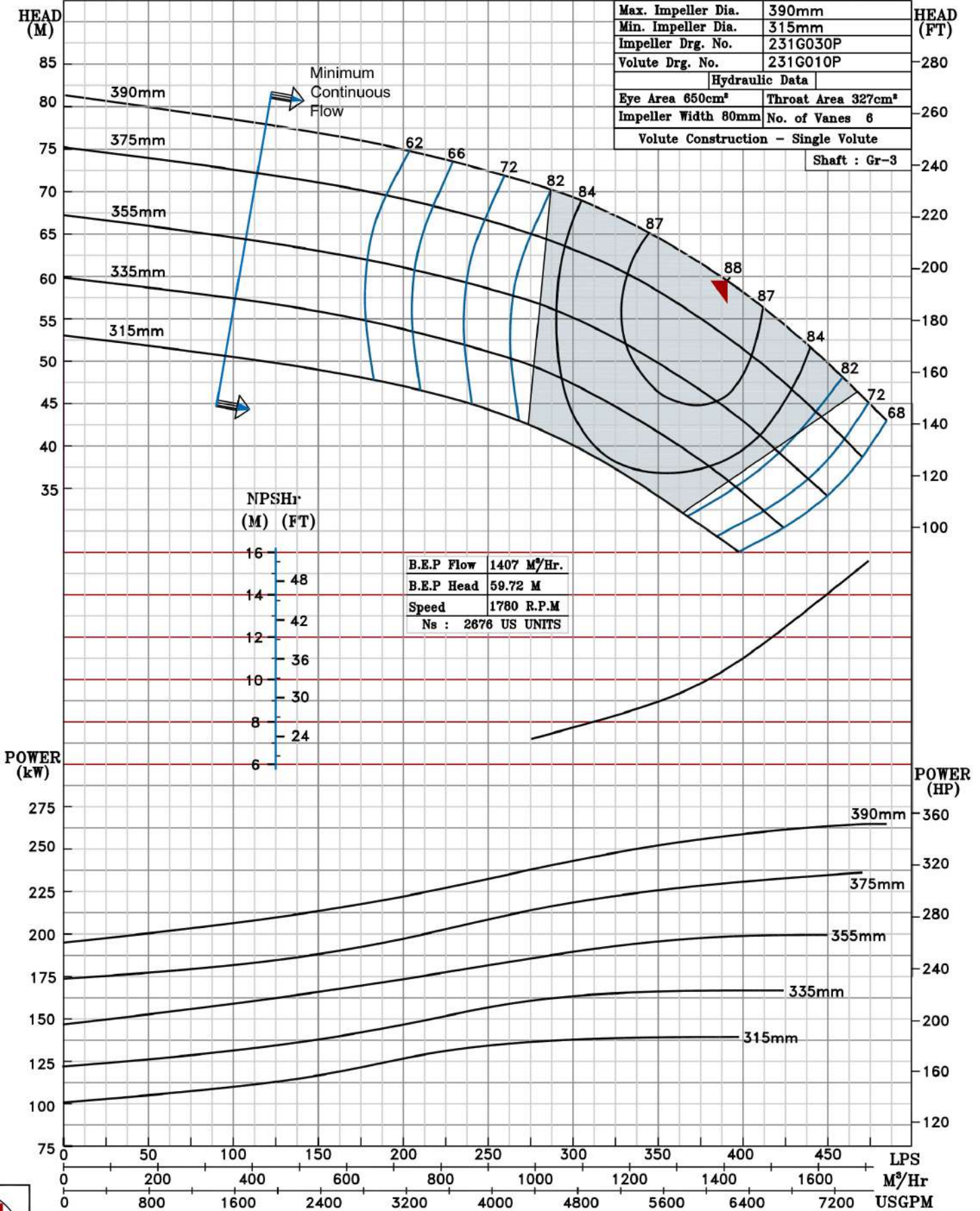


NOTE- PERFORMANCE AS PER ISO 9906 GRADE-2B

<b>PERFORMANCE CURVE OF 250HA @1780 R.P.M</b>		250HA/X/203164	
<h1 style="margin: 0;">FISHER PUMP</h1> <i>CSC RANGE</i>	<b>MODEL 250HA</b>	WORKING PRESS. 16 bar	
	SIZE 300x250-390	TEST PRESS. 24 bar	
	TYPE-AXIALLY SPLIT CASE SINGLE STAGE		SPEED 1780 rpm
			DATE - 10.08.14

SHADED REGION ON THE H-Q CURVE REPRESENTS OPTIMUM SELECTION ZONE

PUMP PERFORMANCE CHARACTERISTICS COMPUTED BASED ON CLEAN COLD WATER S.G 1.0



Max. Impeller Dia.	390mm
Min. Impeller Dia.	315mm
Impeller Drg. No.	231G030P
Volute Drg. No.	231G010P
Hydraulic Data	
Eye Area 650cm²	Throat Area 327cm²
Impeller Width 80mm	No. of Vanes 6
Volute Construction - Single Volute	
Shaft : Gr-3	

