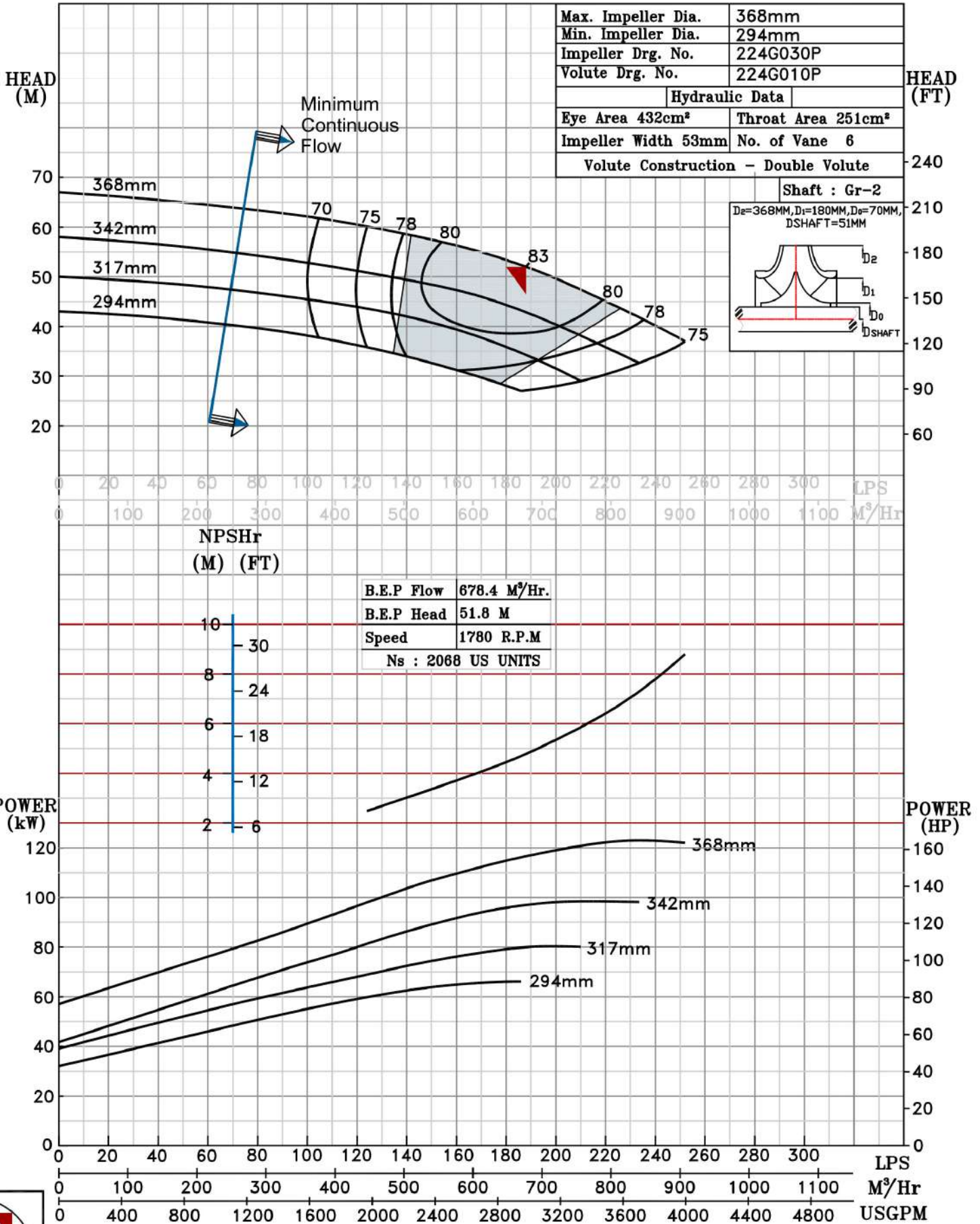
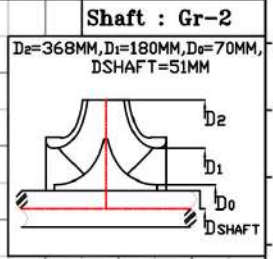


NOTE- PERFORMANCE AS PER ISO 9906-GRADE-2B

PERFORMANCE CURVE OF 200MB @1780 R.P.M		200MB/Y/202464
<b>FISHER PUMP</b>	MODEL 200MB	WORKING PRESS. 12 bar
	SIZE 200x200-368	TEST PRESS. 18 bar
CSC RANGE	TYPE-AXIALLY SPLIT CASE SINGLE STAGE	
SHADED REGION ON THE H-Q CURVE REPRESENTS OPTIMUM SELECTION ZONE		SPEED 1780 rpm
PUMP PERFORMANCE CHARACTERISTICS COMPUTED BASED ON CLEAN COLD WATER S.G 1.0		DATE - 10.12.14

Max. Impeller Dia.	368mm
Min. Impeller Dia.	294mm
Impeller Drg. No.	224G030P
Volute Drg. No.	224G010P
Hydraulic Data	
Eye Area 432cm <sup>2</sup>	Throat Area 251cm <sup>2</sup>
Impeller Width 53mm	No. of Vane 6
Volute Construction - Double Volute	



1780 RPM