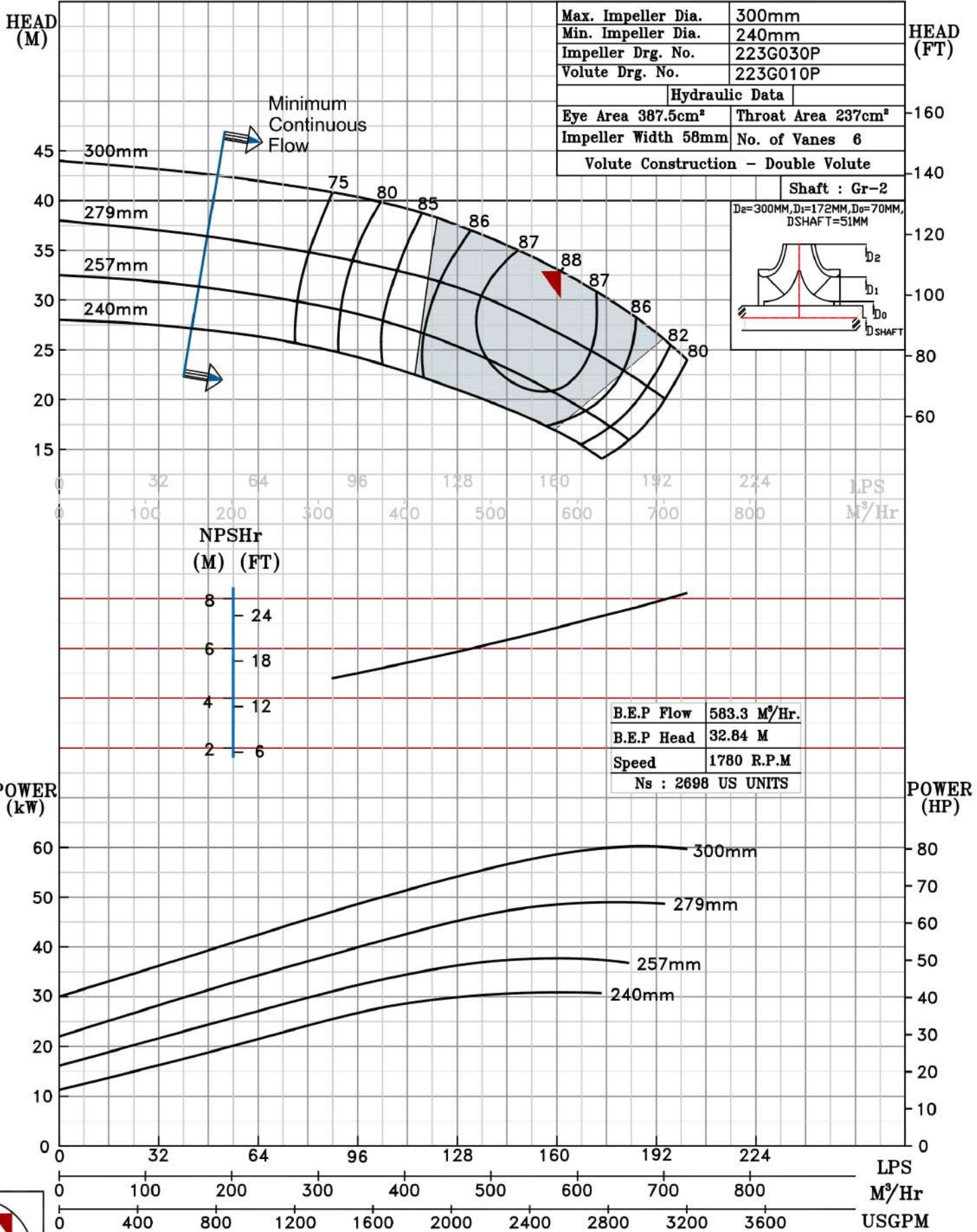
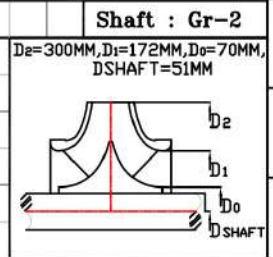


NOTE- PERFORMANCE AS PER ISO 9906 GRADE-2B

PERFORMANCE CURVE OF 200LC @1780 R.P.M		200LC/Y/202364	
FISHER PUMP	MODEL 200LC	WORKING PRESS.	12 bar
	SIZE 200x200-300	TEST PRESS.	18 bar
	TYPE-AXIALLY SPLIT CASE SINGLE STAGE		
CSC RANGE		SPEED 1780 rpm	
SHADED REGION ON THE H-Q CURVE REPRESENTS OPTIMUM SELECTION ZONE		DATE - 10.12.14	

PUMP PERFORMANCE CHARACTERISTICS COMPUTED BASED ON CLEAN COLD WATER S.G 1.0

Max. Impeller Dia.	300mm
Min. Impeller Dia.	240mm
Impeller Drg. No.	223G030P
Volute Drg. No.	223G010P
Hydraulic Data	
Eye Area 387.5cm ²	Throat Area 237cm ²
Impeller Width 58mm	No. of Vanes 6
Volute Construction - Double Volute	



1780 RPM