

NOTE- PERFORMANCE AS PER ISO 9906 GRADE-2B

PERFORMANCE CURVE OF 200HH @1780 R.P.M

200HH/Y/202864

**FISHER PUMP**

CSC RANGE

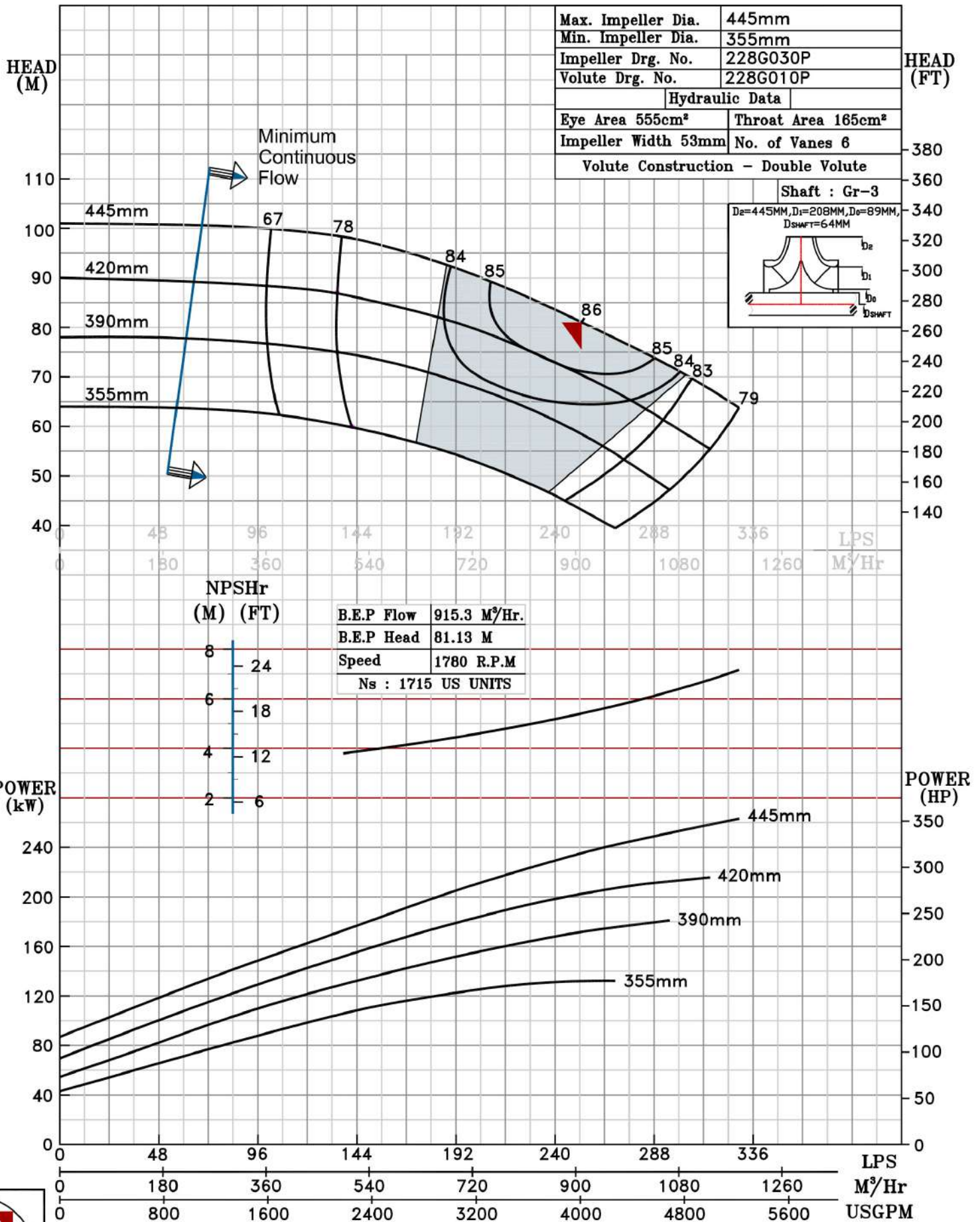
MODEL 200HH	WORKING PRESS. 16 bar
SIZE 250x200-445	TEST PRESS. 24 bar
TYPE-AXIALLY SPLIT CASE SINGLE STAGE	

SPEED 1780 rpm

DATE - 10.12.14

SHADED REGION ON THE H-Q CURVE REPRESENTS OPTIMUM SELECTION ZONE

PUMP PERFORMANCE CHARACTERISTICS COMPUTED BASED ON CLEAN COLD WATER S.G 1.0



1780 RPM