

NOTE- PERFORMANCE AS PER ISO 9906 GRADE-2B

PERFORMANCE CURVE OF 150LA @1780 R.P.M

150LA/Y/201564

**FISHER PUMP**

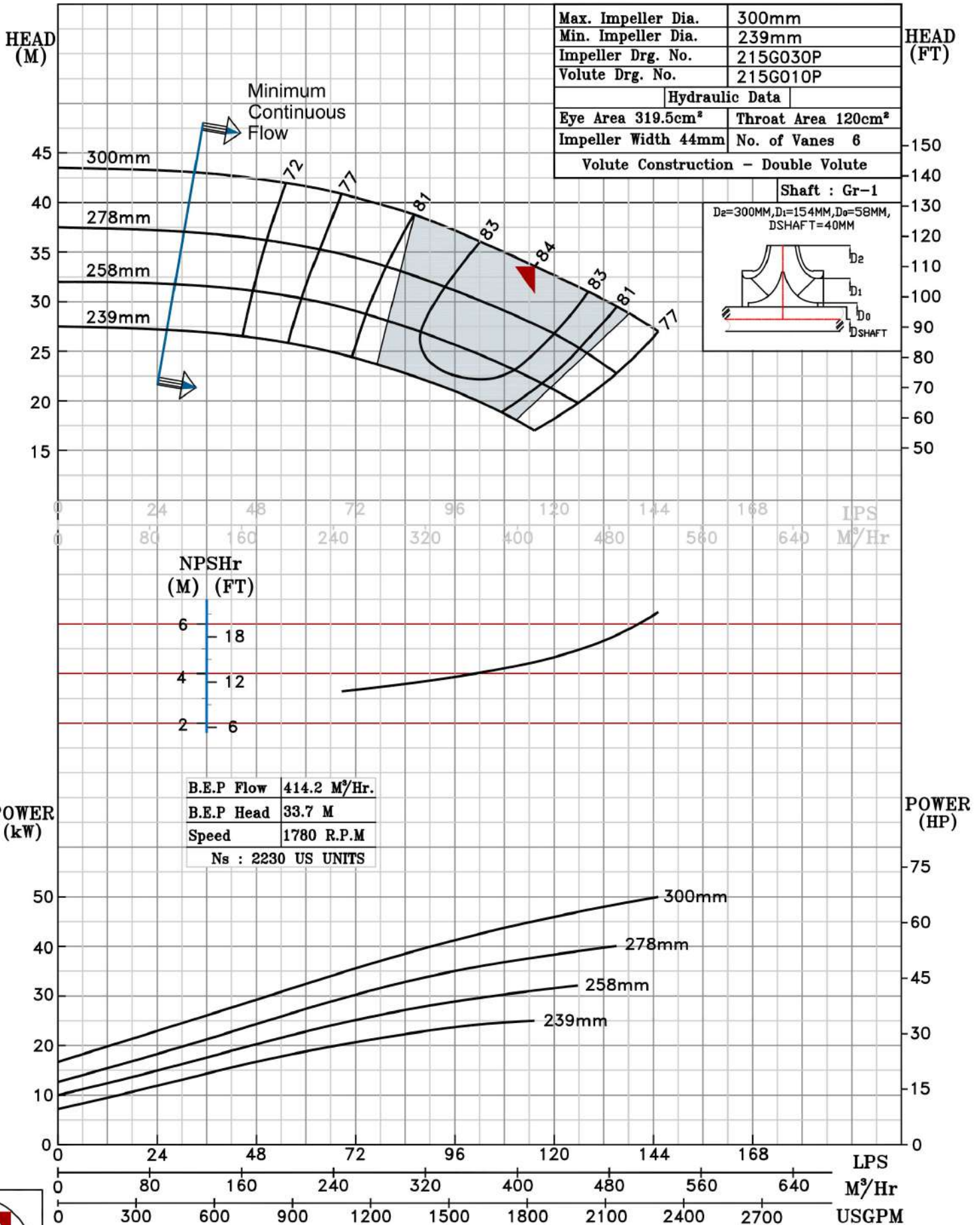
CSC RANGE

MODEL 150LA	WORKING PRESS. 12 bar
SIZE 200x150-300	TEST PRESS. 18 bar
TYPE-AXIALLY SPLIT CASE SINGLE STAGE	
SPEED 1780 rpm	

SHADED REGION ON THE H-Q CURVE REPRESENTS OPTIMUM SELECTION ZONE

DATE - 10.12.14

PUMP PERFORMANCE CHARACTERISTICS COMPUTED BASED ON CLEAN COLD WATER S.G 1.0



1780 RPM