

NOTE- PERFORMANCE AS PER ISO 9906 GRADE-2B

PERFORMANCE CURVE OF 150HA @1780 R.P.M

150HA/Y/201964

**FISHER PUMP**

CSC RANGE

MODEL 150HA

WORKING PRESS. 12 bar

SIZE 200x150-390

TEST PRESS. 18 bar

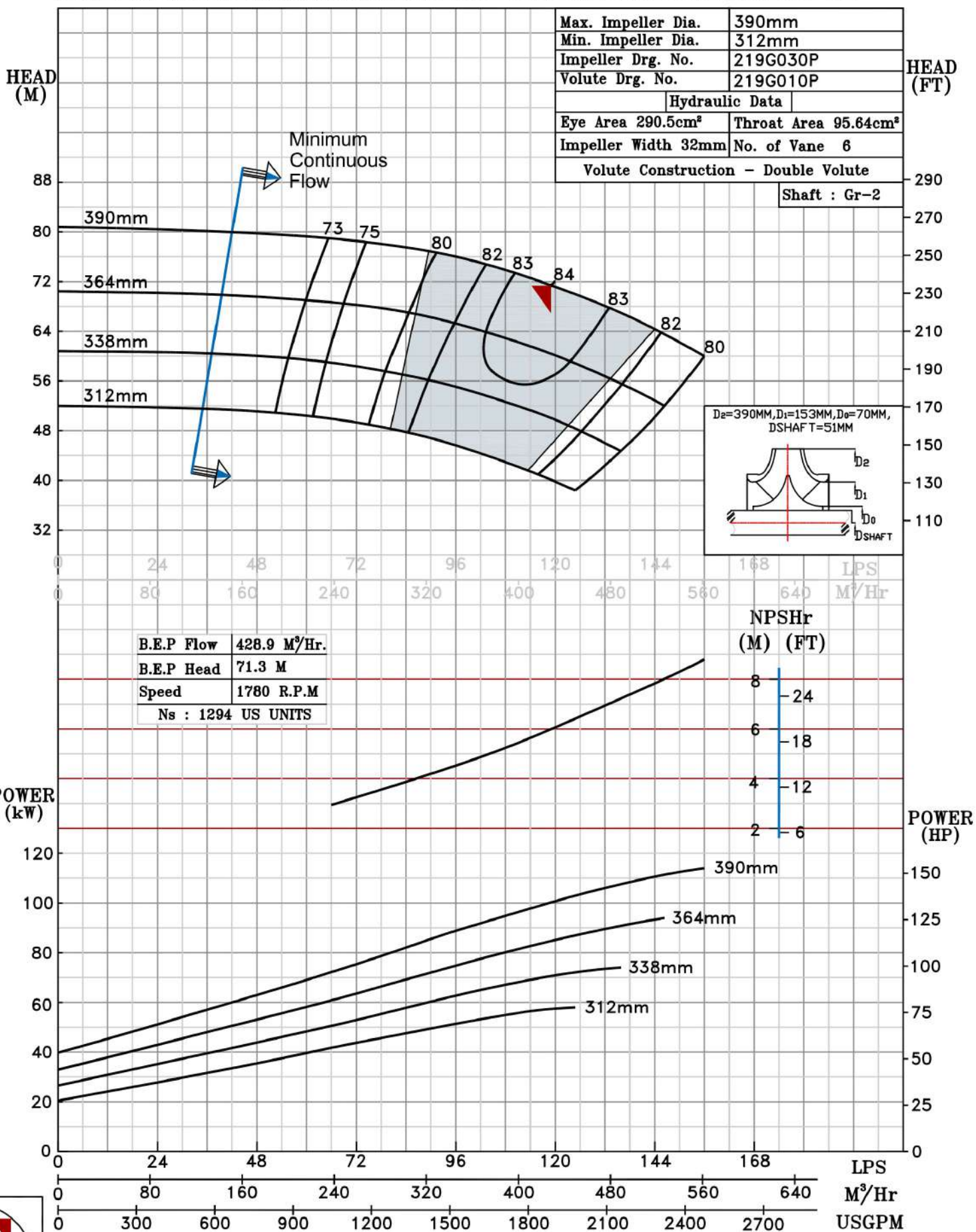
TYPE-AXIALLY SPLIT CASE SINGLE STAGE

SPEED 1780 rpm

DATE - 10.12.14

SHADED REGION ON THE H-Q CURVE REPRESENTS OPTIMUM SELECTION ZONE

PUMP PERFORMANCE CHARACTERISTICS COMPUTED BASED ON CLEAN COLD WATER S.G 1.0



1780 RPM

