

NOTE- PERFORMANCE AS PER ISO 9906 GRADE-2B

PERFORMANCE TEST CURVE OF 100HA @1780 R.P.M

100HA/Y/201064

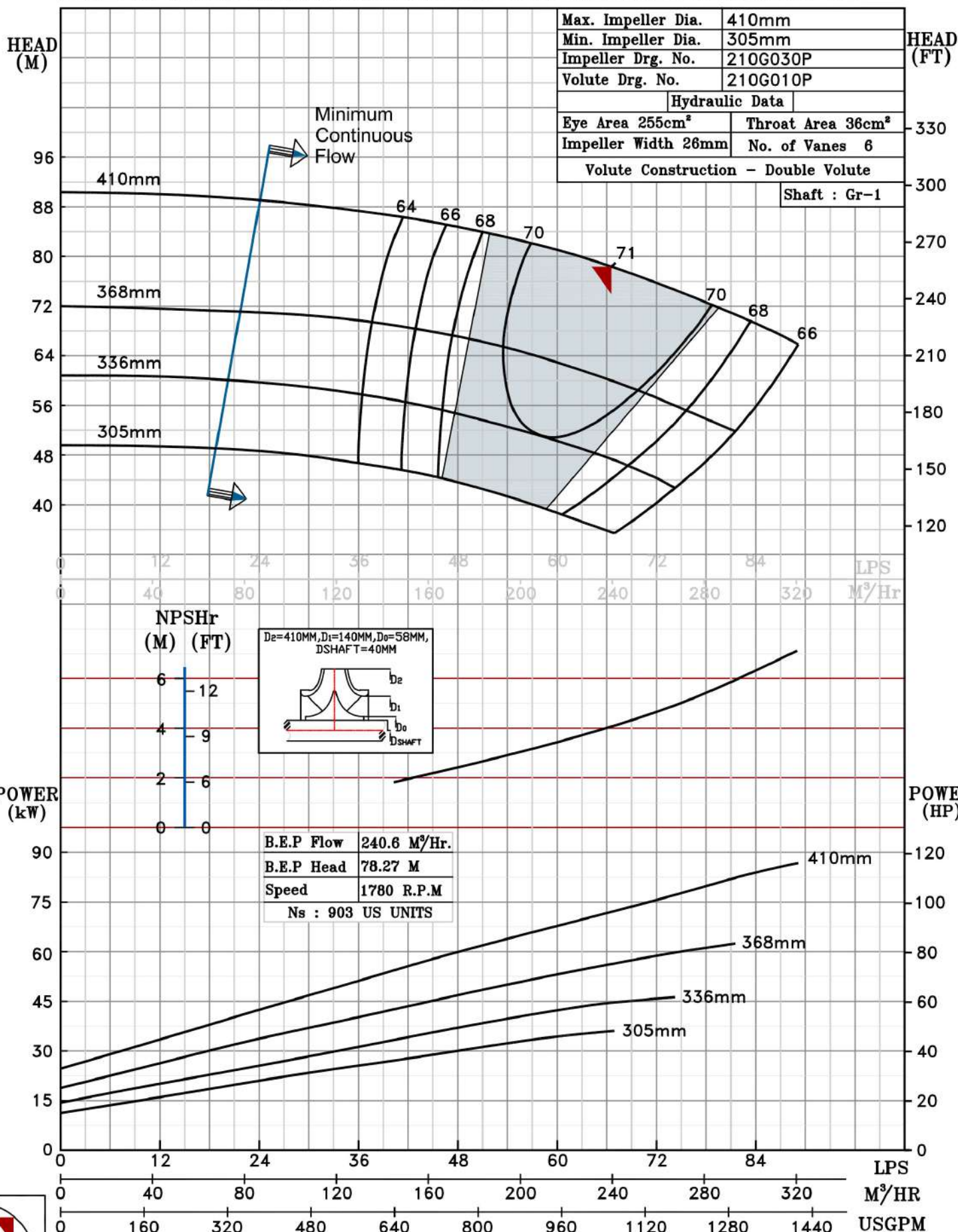
**FISHER PUMP**

CSC RANGE

MODEL 100HA	WORKING PRESS. 12 bar
SIZE 125x100-410	TEST PRESS. 18 bar
TYPE-AXIALLY SPLIT CASE SINGLE STAGE	
SPEED 1780 rpm	
DATE - 10.12.14	

SHADED REGION ON THE H-Q CURVE REPRESENTS OPTIMUM SELECTION ZONE

PUMP PERFORMANCE CHARACTERISTICS COMPUTED BASED ON CLEAN COLD WATER S.G 1.0



1780 RPM

