

NOTE- PERFORMANCE AS PER ISO 9906 GRADE-2B

PERFORMANCE CURVE OF 80MA @1465 R.P.M

80MA/X/200654

FISHER PUMP

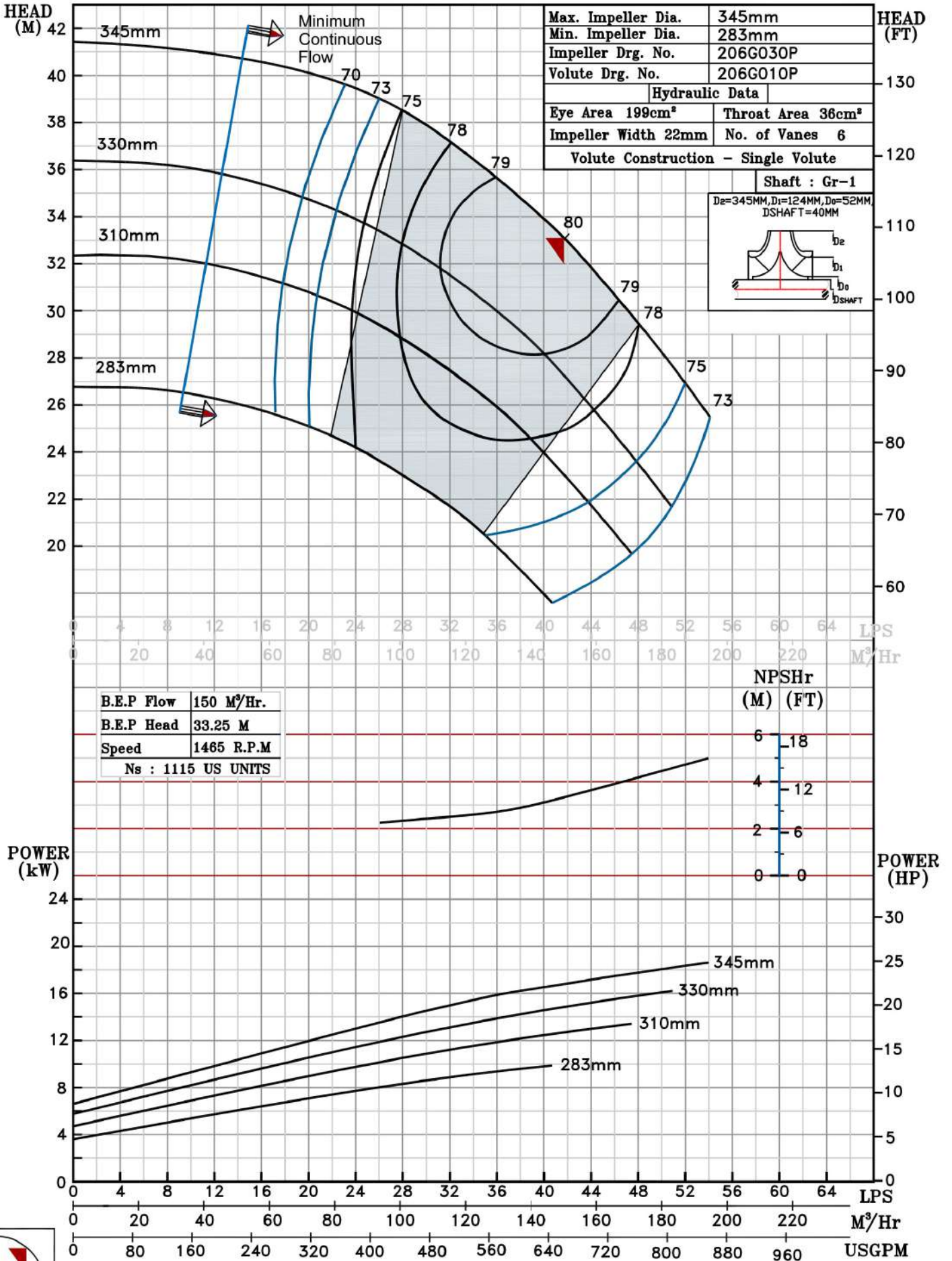
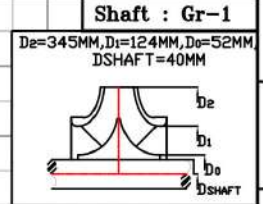
CSC RANGE

MODEL 80MA	WORKING PRESS	12 bar
SIZE 100x80-345	TEST PRESS.	18 bar
TYPE-AXIALLY SPLIT CASE SINGLE STAGE		SPEED 1465 rpm
		DATE - 10.08.14

SHADED REGION ON THE H-Q CURVE REPRESENTS OPTIMUM SELECTION ZONE

PUMP PERFORMANCE CHARACTERISTICS COMPUTED BASED ON CLEAN COLD WATER S.G 1.0

Max. Impeller Dia.	345mm
Min. Impeller Dia.	283mm
Impeller Drg. No.	206G030P
Volute Drg. No.	206G010P
Hydraulic Data	
Eye Area 199cm ²	Throat Area 36cm ²
Impeller Width 22mm	No. of Vanes 6
Volute Construction - Single Volute	



1465 RPM