

NOTE- PERFORMANCE AS PER ISO 9906 GRADE-2B

PERFORMANCE CURVE OF 65MA @1465 R.P.M

65MA/X/200454

FISHER PUMP

CSC RANGE

MODEL 65MA	WORKING PRESS. 12 bar
SIZE 80x65-340	TEST PRESS. 18 bar
TYPE-AXIALLY SPLIT CASE SINGLE STAGE	
SPEED 1465 rpm	

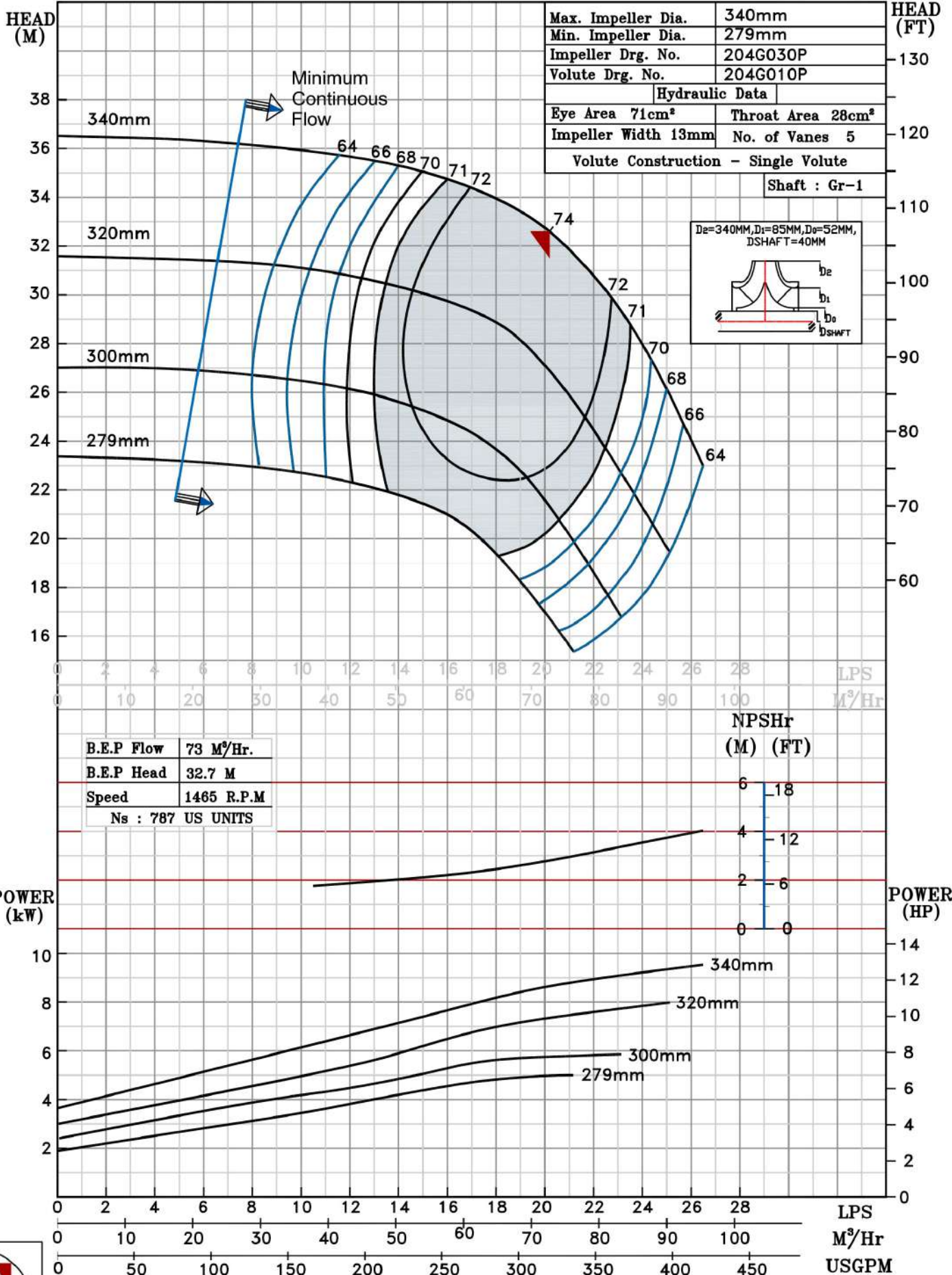
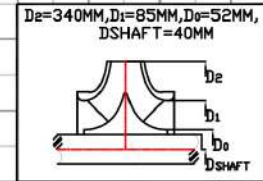
SHADED REGION ON THE H-Q CURVE REPRESENTS OPTIMUM SELECTION ZONE

DATE - 10.08.14

PUMP PERFORMANCE CHARACTERISTICS COMPUTED BASED ON CLEAN COLD WATER S.G 1.0

Max. Impeller Dia.	340mm
Min. Impeller Dia.	279mm
Impeller Drg. No.	204G030P
Volute Drg. No.	204G010P
Hydraulic Data	
Eye Area 71cm ²	Throat Area 28cm ²
Impeller Width 13mm	No. of Vanes 5
Volute Construction - Single Volute	

Shaft : Gr-1



B.E.P Flow	73 M ³ /Hr.
B.E.P Head	32.7 M
Speed	1465 R.P.M
Ns : 787	US UNITS

NPSHr (M) (FT)

6	18
4	12
2	6
0	0



1465 RPM