

NOTE- PERFORMANCE AS PER ISO 9906 GRADE-2B

PERFORMANCE CURVE OF 150MC @1480 R.P.M

150MC/Y/201754

FISHER PUMP

CSC RANGE

MODEL 150MC

WORKING PRESS. 12 bar

SIZE 200x150-360

TEST PRESS. 18 bar

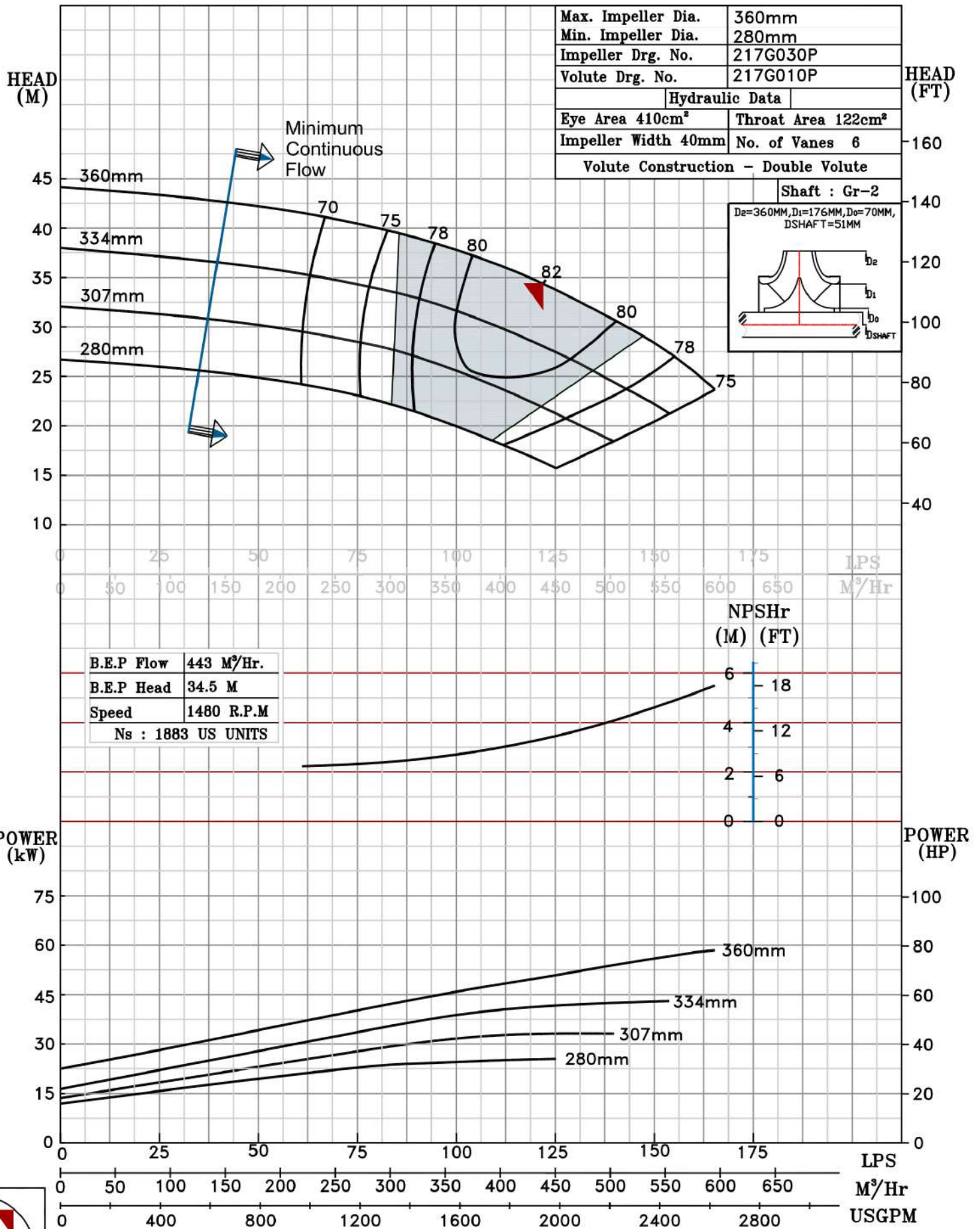
TYPE-AXIALLY SPLIT CASE SINGLE STAGE

SPEED 1480 rpm

SHADED REGION ON THE H-Q CURVE REPRESENTS OPTIMUM SELECTION ZONE

DATE - 10.12.14

PUMP PERFORMANCE CHARACTERISTICS COMPUTED BASED ON CLEAN COLD WATER S.G 1.0



1480 RPM

