

NOTE- PERFORMANCE AS PER ISO 9906 GRADE-2B

PERFORMANCE CURVE OF 150HH @1480 R.P.M

150HH/Y/202054

FISHER PUMP

CSC RANGE

MODEL	150HH	WORKING PRESS.	16 bar
SIZE	200x150-438	TEST PRESS.	24 bar
TYPE-AXIALLY SPLIT CASE SINGLE STAGE		SPEED 1480 rpm	
		DATE - 10.12.14	

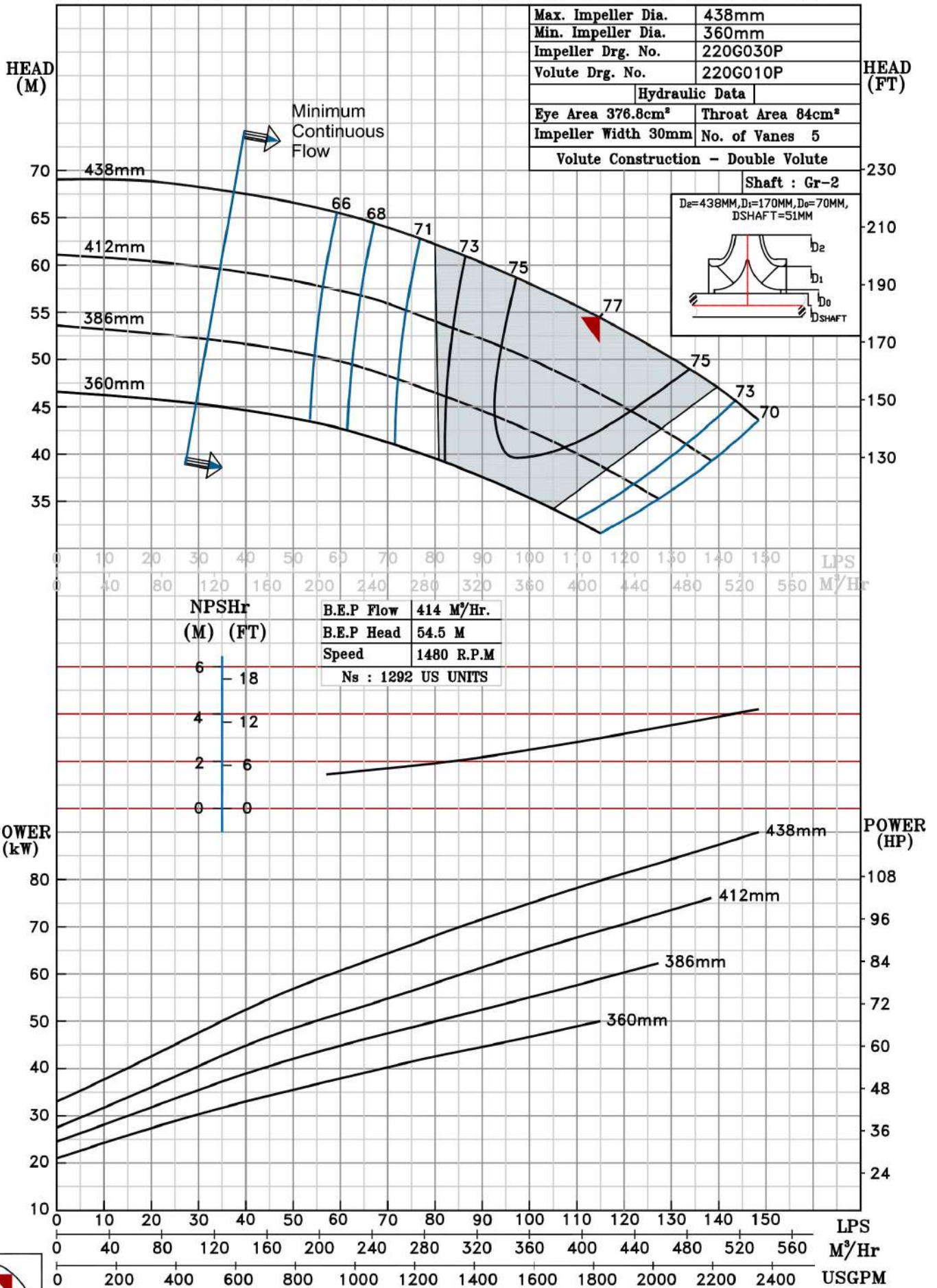
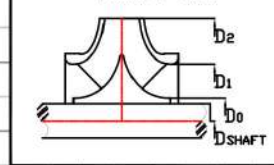
SHADED REGION ON THE H-Q CURVE REPRESENTS OPTIMUM SELECTION ZONE

PUMP PERFORMANCE CHARACTERISTICS COMPUTED BASED ON CLEAN COLD WATER S.G 1.0

Max. Impeller Dia.	438mm
Min. Impeller Dia.	360mm
Impeller Drg. No.	220G030P
Volute Drg. No.	220G010P
Hydraulic Data	
Eye Area 376.8cm ²	Throat Area 84cm ²
Impeller Width 30mm	No. of Vanes 5
Volute Construction - Double Volute	

Shaft : Gr-2

De=438MM, D1=170MM, Dø=70MM, DSHAFT T=51MM



1480 RPM