

NOTE- PERFORMANCE AS PER ISO 9906 GRADE-2B

PERFORMANCE CURVE OF 125LA @1465 R.P.M

125LA/Y/201154

FISHER PUMP

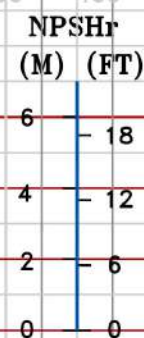
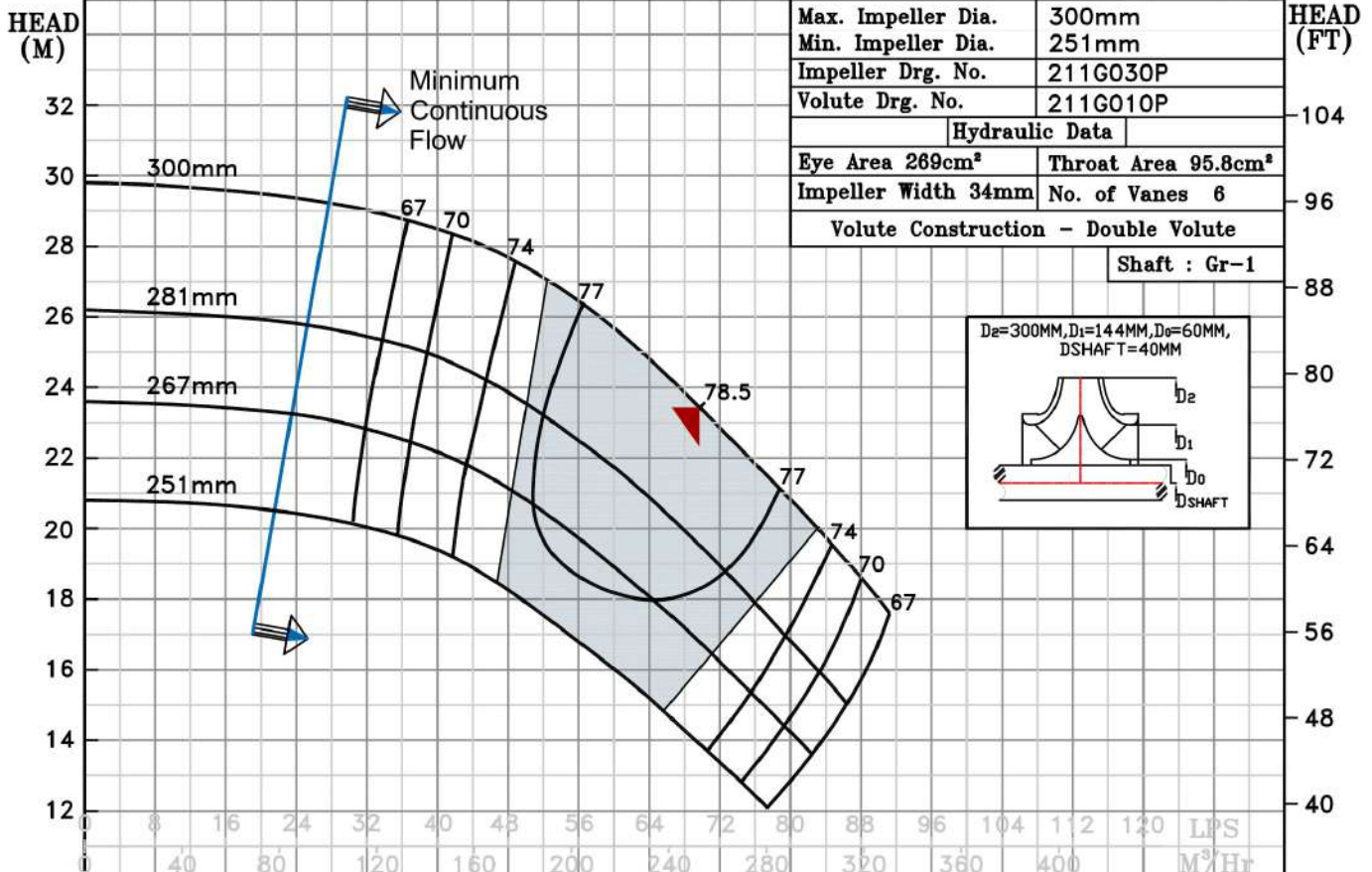
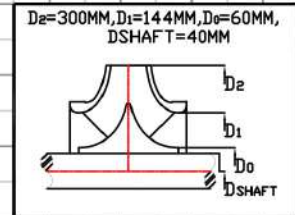
CSC RANGE

MODEL 125LA	WORKING PRESS.	12 bar
SIZE 150x125-300	TEST PRESS.	18 bar
TYPE-AXIALLY SPLIT CASE SINGLE STAGE		SPEED 1465 rpm
		DATE - 10.12.14

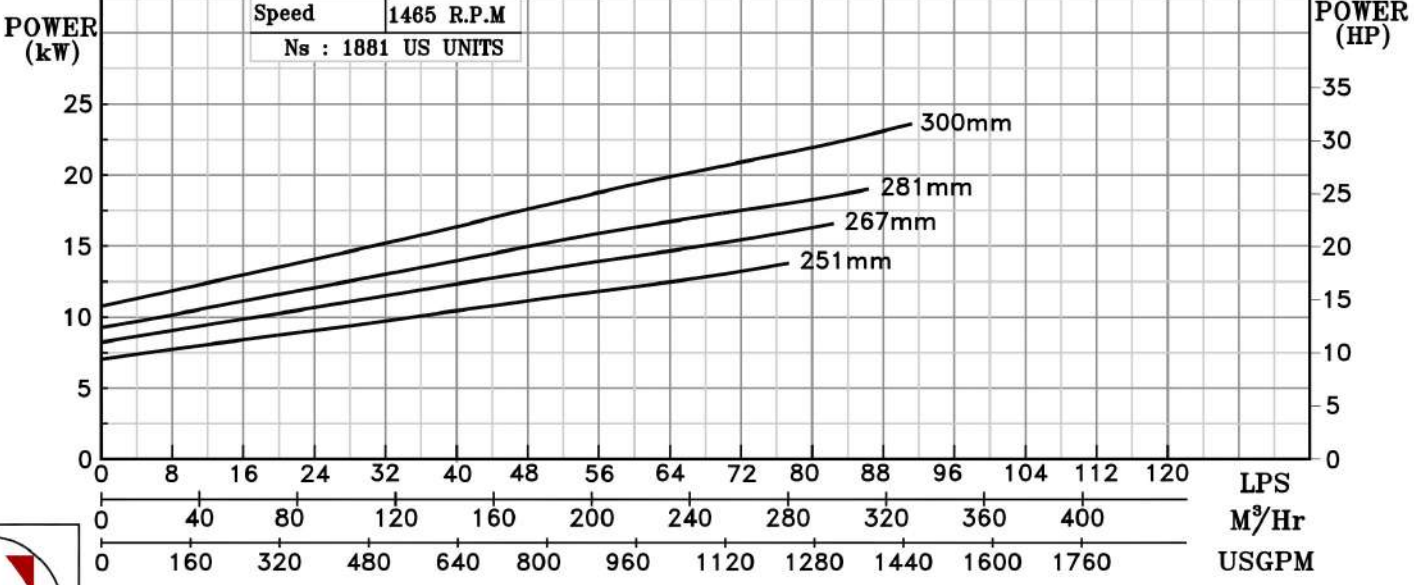
SHADED REGION ON THE H-Q CURVE REPRESENTS OPTIMUM SELECTION ZONE

PUMP PERFORMANCE CHARACTERISTICS COMPUTED BASED ON CLEAN COLD WATER S.G 1.0

Max. Impeller Dia.	300mm
Min. Impeller Dia.	251mm
Impeller Drg. No.	211G030P
Volute Drg. No.	211G010P
Hydraulic Data	
Eye Area 269cm ²	Throat Area 95.8cm ²
Impeller Width 34mm	No. of Vanes 6
Volute Construction - Double Volute	
Shaft : Gr-1	



B.E.P Flow	253.2 M ³ /Hr.
B.E.P Head	23.5 M
Speed	1465 R.P.M
Ns	1881 US UNITS



1465 RPM