

NOTE- PERFORMANCE AS PER ISO 9906 GRADE-2B

PERFORMANCE CURVE OF 8SW19L @740 R.P.M

8SW19L/X/601858

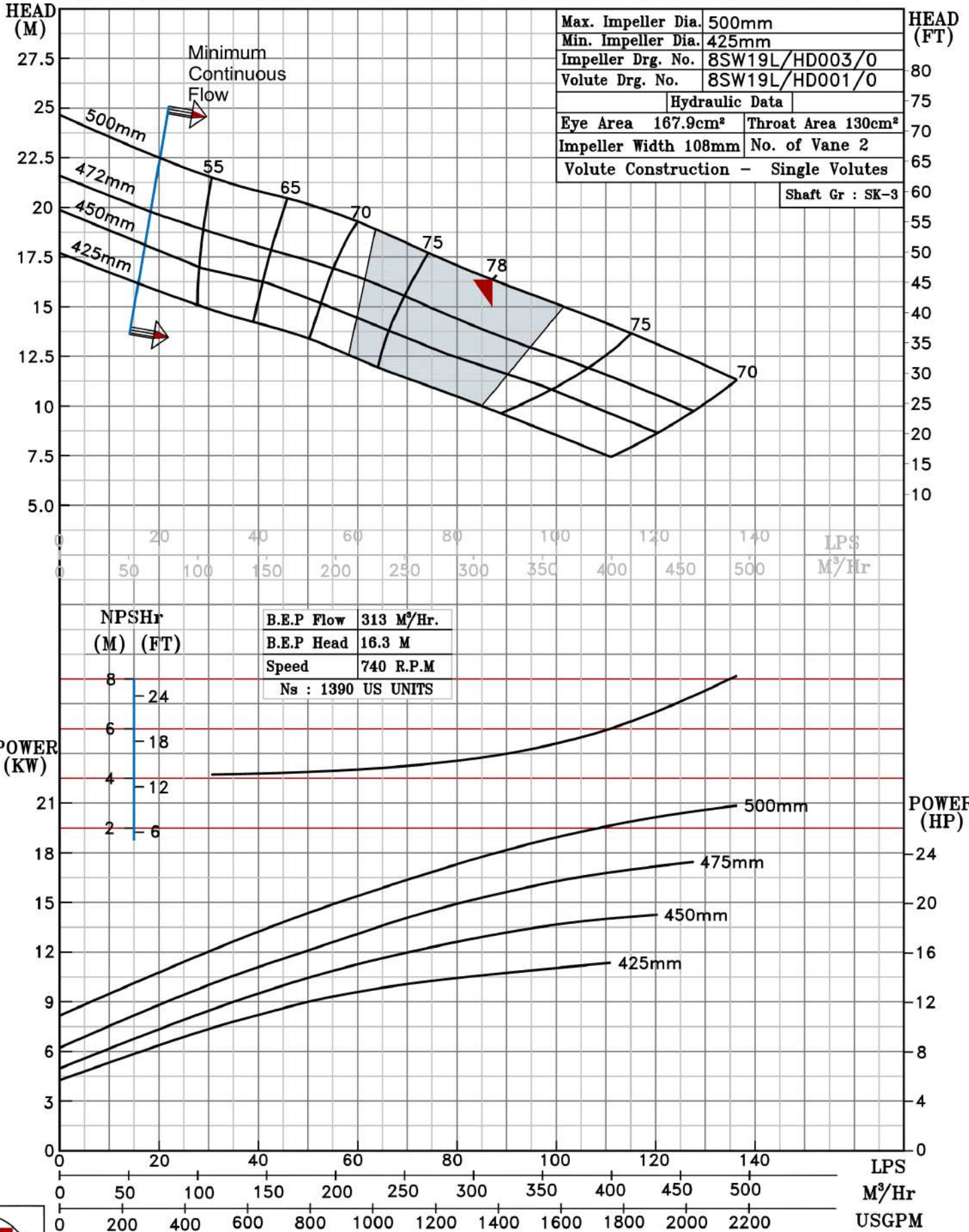
FISHER PUMP

SW RANGE

MODEL 8SW19L	WORKING PRESS.	12 bar
SIZE 250x200-500	TEST PRESS.	18 bar
TYPE-DRY PIT NON-CLOG SEWAGE PUMP		
MAX. SPHERE SIZE - 90MM	SPEED 740 rpm	

SHADED REGION ON THE H-Q CURVE REPRESENTS OPTIMUM SELECTION ZONE

PUMP PERFORMANCE CHARACTERISTICS COMPUTED BASED ON CLEAN COLD WATER S.G 1.0



740 RPM