

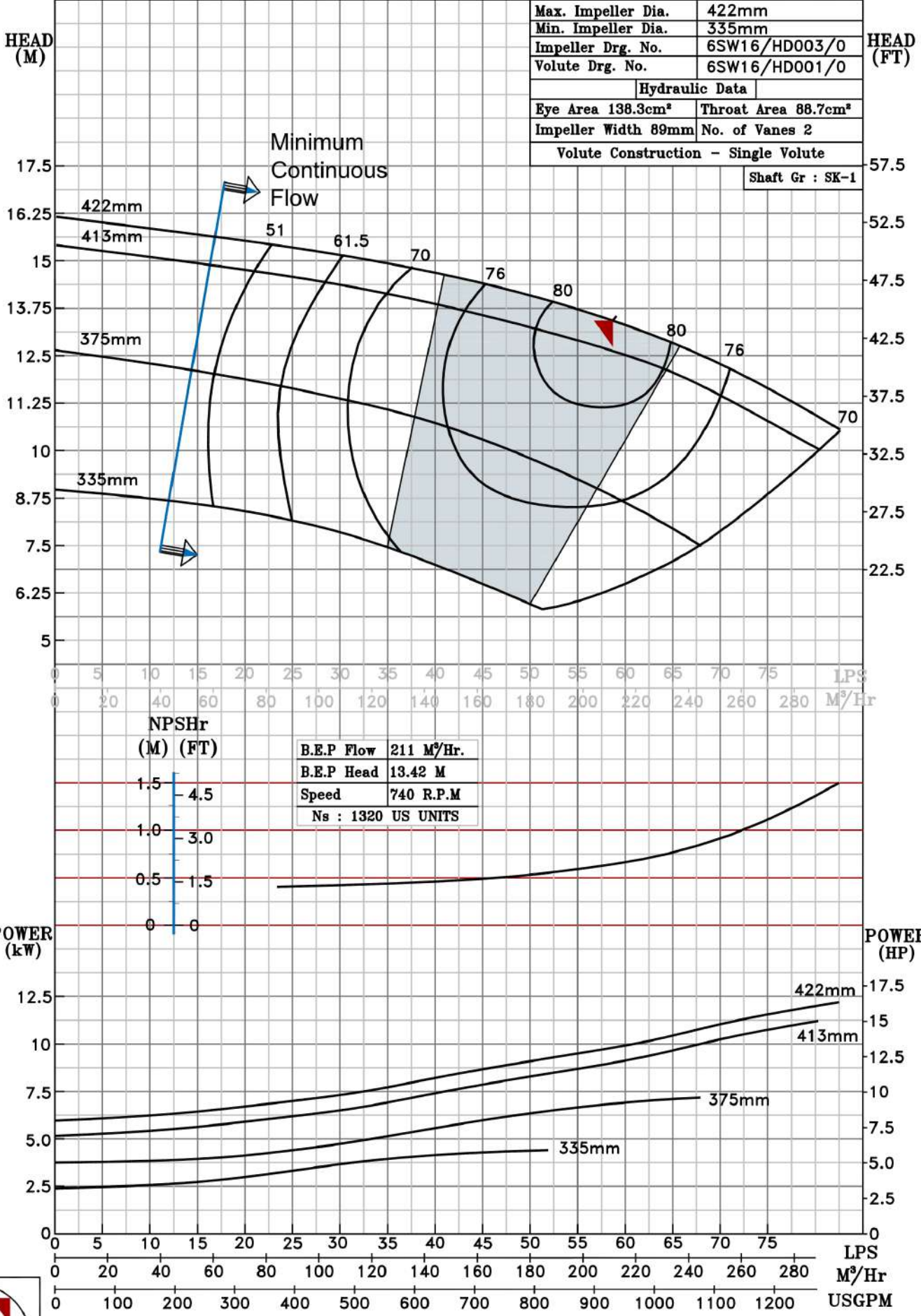
NOTE- PERFORMANCE AS PER ISO 9906 GRADE-2B

<b>PERFORMANCE CURVE OF 6SW16 @740 R.P.M</b>		6SW16/X/601158
<b>FISHER PUMP</b> <i>SW RANGE</i>	<b>MODEL 6SW16</b>	WORKING PRESS. 12 bar
	SIZE 200x150-422	TEST PRESS. 18 bar
	TYPE-DRY PIT NON-CLOG SEWAGE PUMP	
	MAX. SPHERE SIZE - 50 MM	SPEED 740 rpm

SHADED REGION ON THE H-Q CURVE REPRESENTS OPTIMUM SELECTION ZONE

PUMP PERFORMANCE CHARACTERISTICS COMPUTED BASED ON CLEAN COLD WATER S.G 1.0

Max. Impeller Dia.	422mm
Min. Impeller Dia.	335mm
Impeller Drg. No.	6SW16/HD003/0
Volute Drg. No.	6SW16/HD001/0
Hydraulic Data	
Eye Area 138.3cm <sup>2</sup>	Throat Area 88.7cm <sup>2</sup>
Impeller Width 89mm	No. of Vanes 2
Volute Construction - Single Volute	
Shaft Gr : SK-1	



740 RPM