

NOTE- PERFORMANCE AS PER ISO 9906 GRADE-2B

PERFORMANCE CURVE OF 6SW13 @740 R.P.M

6SW13/X/601058

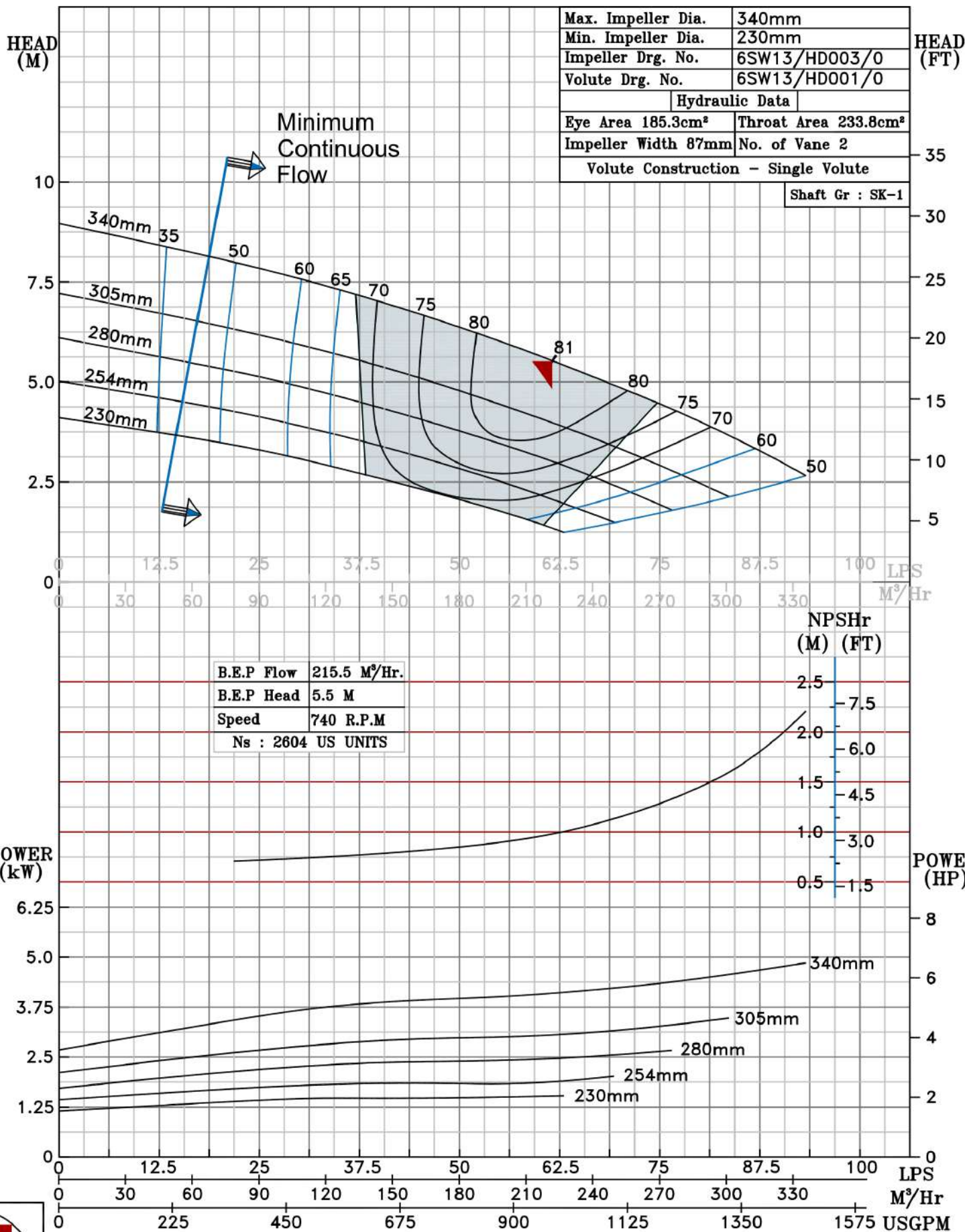
**FISHER PUMP**

SW RANGE

MODEL 6SW13	WORKING PRESS. 12 bar
SIZE-200x150-340	TEST PRESS. 18 bar
TYPE-DRY PIT NON-CLOG SEWAGE PUMP	
MAX. SPHERE SIZE - 50MM	SPEED 740 rpm

SHADED REGION ON THE H-Q CURVE REPRESENTS OPTIMUM SELECTION ZONE

PUMP PERFORMANCE CHARACTERISTICS COMPUTED BASED ON CLEAN COLD WATER S.G 1.0



740 RPM

