

NOTE- PERFORMANCE AS PER ISO 9906 GRADE-2B

PERFORMANCE CURVE OF 10SW22 @740 R.P.M

10SW22/X/602658

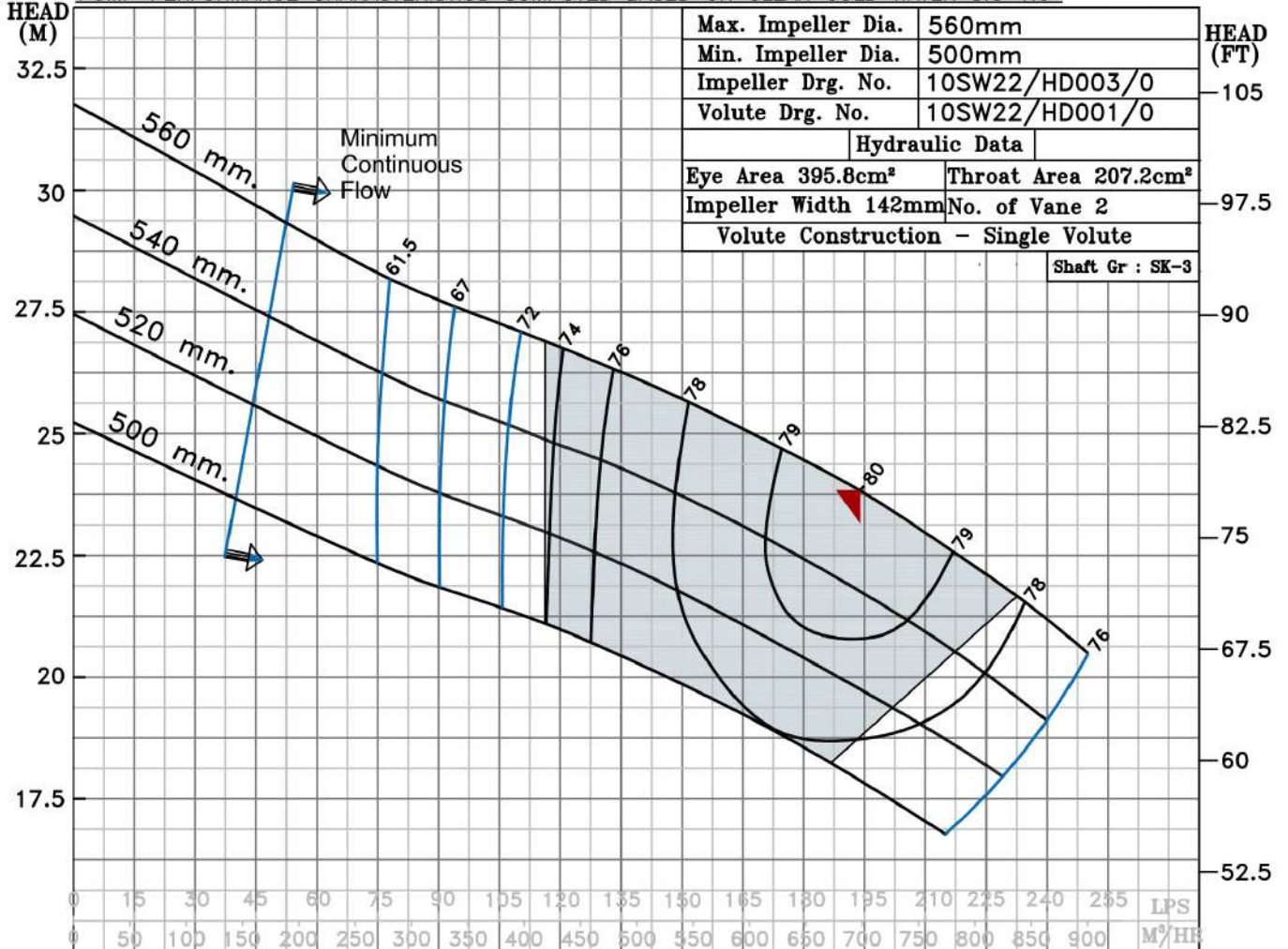
FISHER PUMP

SW RANGE

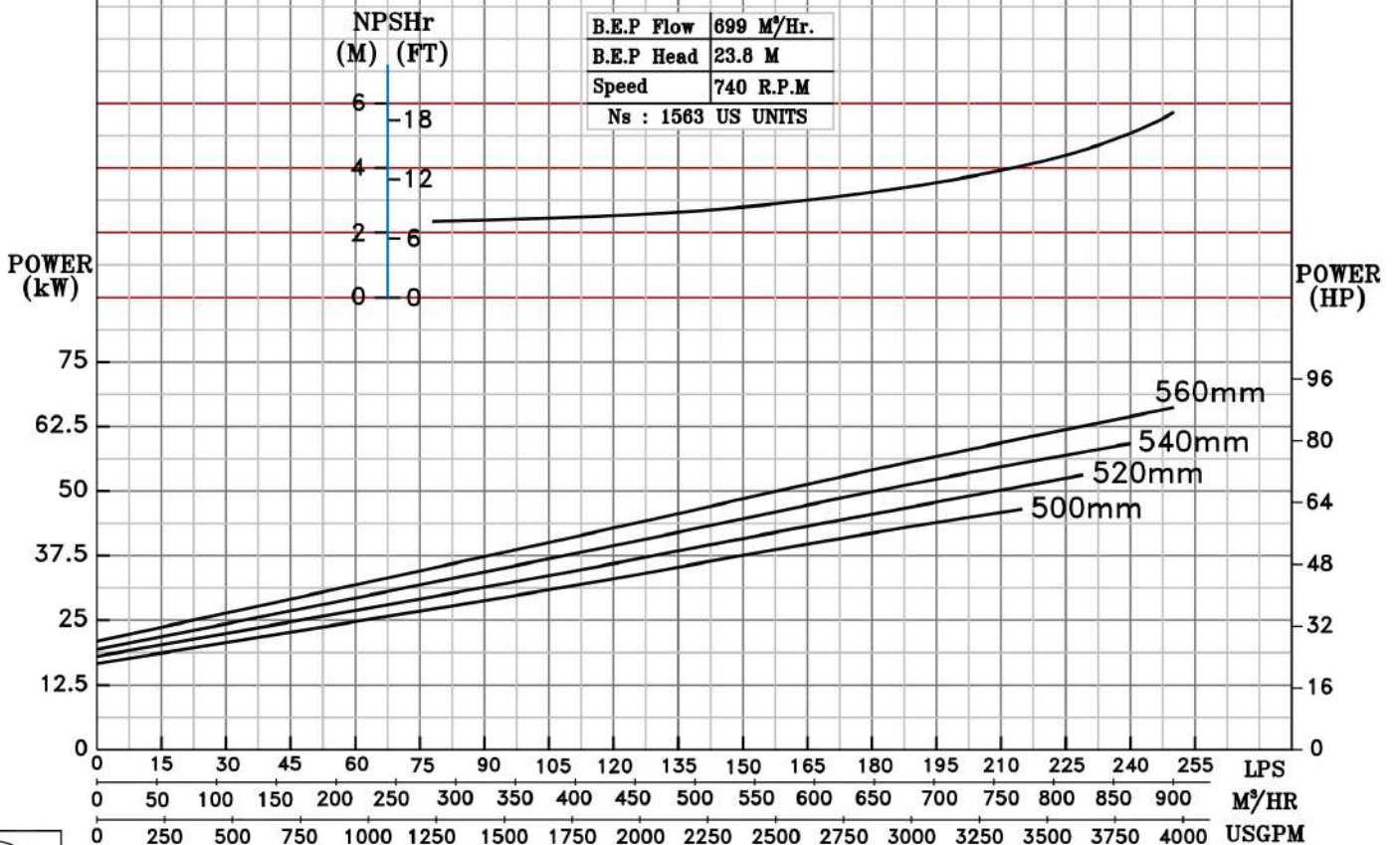
MODEL 10SW22	WORKING PRESS. 16 bar
SIZE 300x250-560	TEST PRESS. 24 bar
TYPE-DRY PIT NON-CLOG SEWAGE PUMP	
MAX. SPHERE SIZE - 100MM	SPEED 740 rpm

SHADED REGION ON THE H-Q CURVE REPRESENTS OPTIMUM SELECTION ZONE

PUMP PERFORMANCE CHARACTERISTICS COMPUTED BASED ON CLEAN COLD WATER S.G 1.0



Max. Impeller Dia.	560mm	HEAD (FT)	105
Min. Impeller Dia.	500mm		
Impeller Drg. No.	10SW22/HD003/0		
Volute Drg. No.	10SW22/HD001/0		
Hydraulic Data			
Eye Area 395.8cm²	Throat Area 207.2cm²		97.5
Impeller Width 142mm	No. of Vane 2		
Volute Construction - Single Volute			
Shaft Gr : SK-3			



B.E.P Flow	699 M³/HR.
B.E.P Head	23.8 M
Speed	740 R.P.M
Ns	1563 US UNITS

