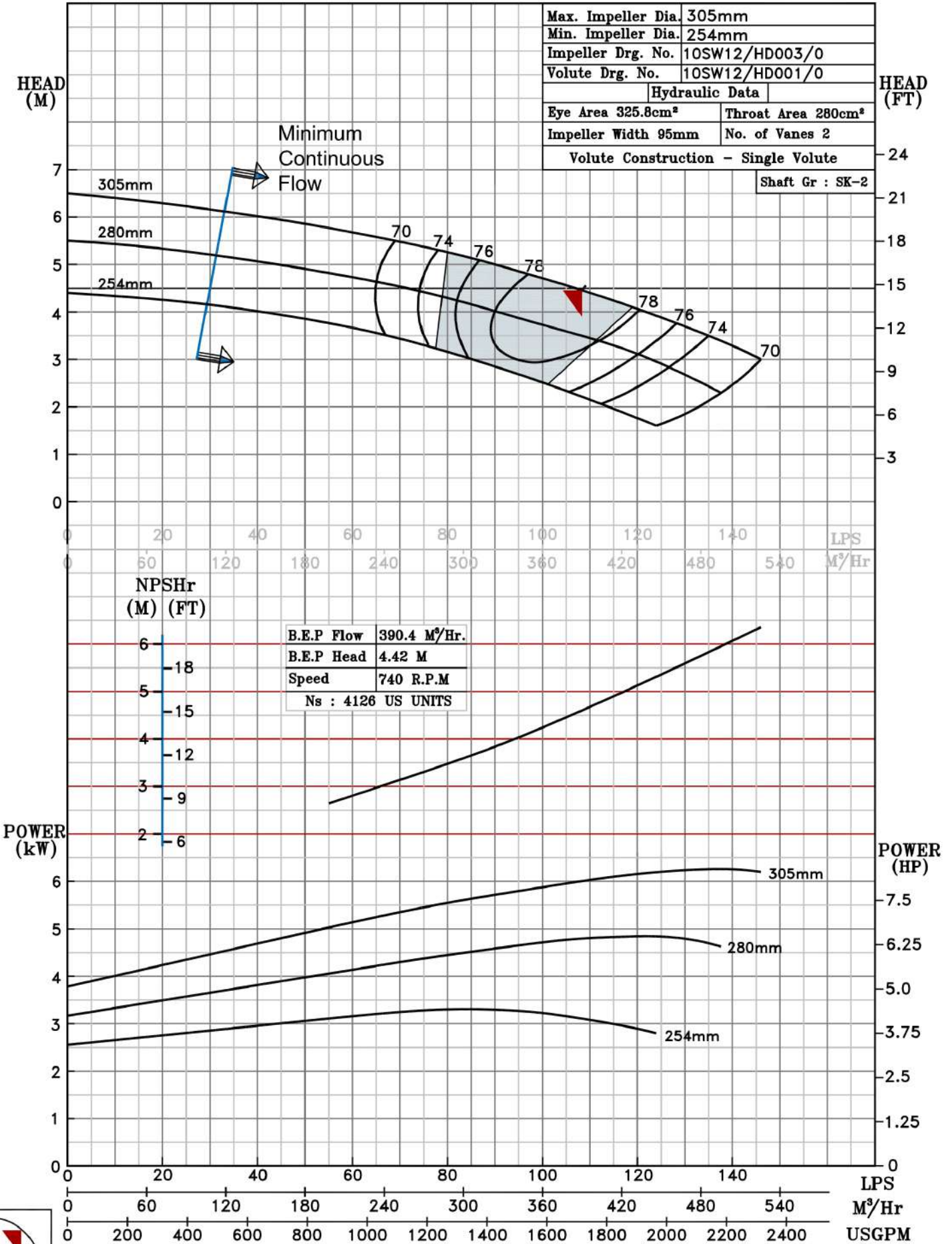


NOTE- PERFORMANCE AS PER ISO 9906 GRADE-2B

<b>PERFORMANCE CURVE OF 10SW12 @740 R.P.M</b>		10SW12/X/602258	
<b>FISHER PUMP</b>	<b>MODEL 10SW12</b>	WORKING PRESS.	12 bar
	SIZE 300x250-305	TEST PRESS.	18 bar
	<b>SW RANGE</b>	TYPE-DRY PIT NON-CLOG SEWAGE PUMP	
	MAX. SPHERE SIZE - 90MM	SPEED 740 rpm	

SHADED REGION ON THE H-Q CURVE REPRESENTS OPTIMUM SELECTION ZONE

PUMP PERFORMANCE CHARACTERISTICS COMPUTED BASED ON CLEAN COLD WATER S.G 1.0



740 RPM