

NOTE- PERFORMANCE AS PER ISO 9906 GRADE-2B

PERFORMANCE CURVE OF 8SW16 @980 R.P.M

8SW16/X/601456

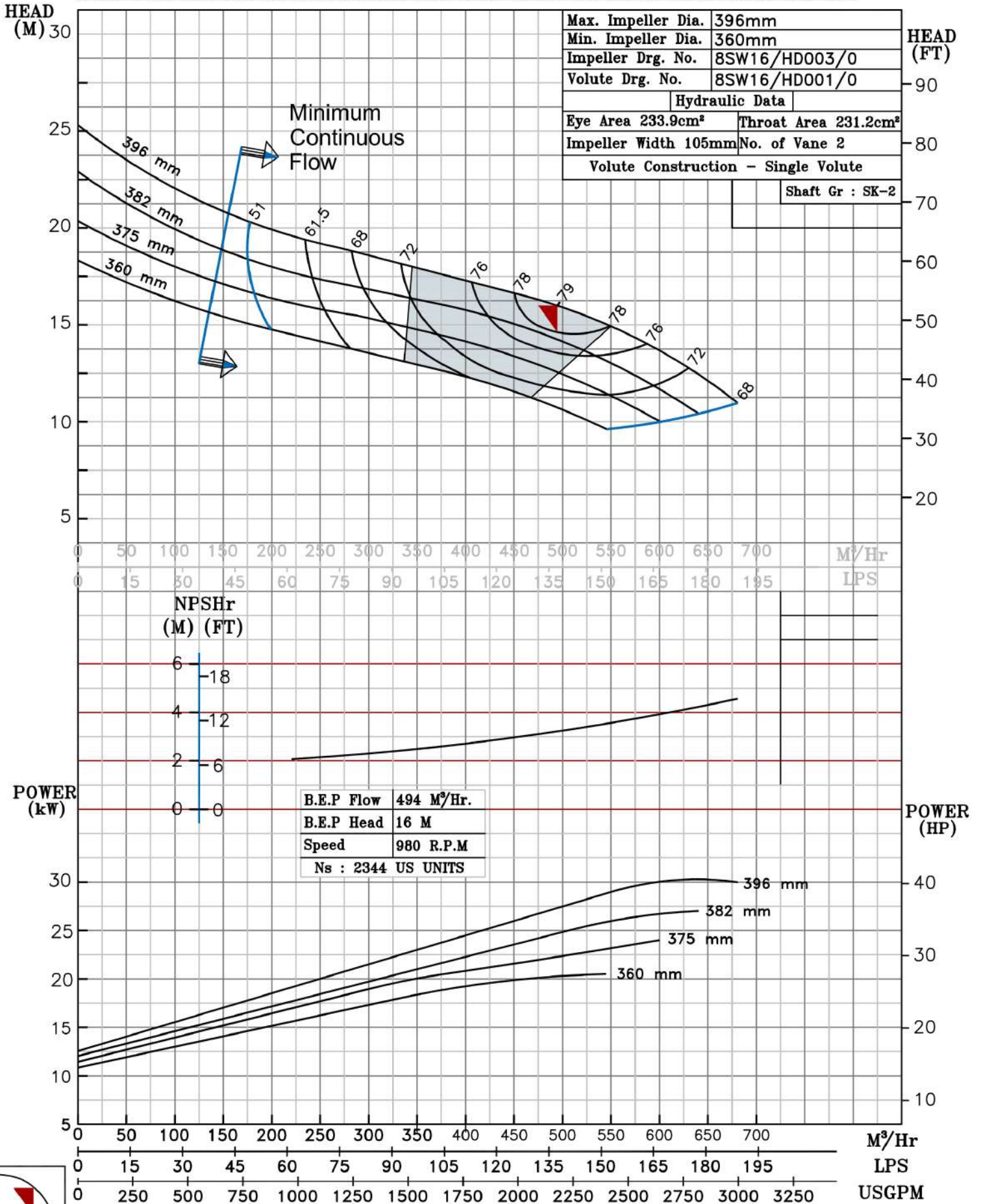
FISHER PUMP

SW RANGE

| | | |
|-----------------------------------|----------------|--------|
| MODEL 8SW16 | WORKING PRESS. | 12 bar |
| SIZE-250X200-396 | TEST PRESS. | 18 bar |
| TYPE-DRY PIT NON-CLOG SEWAGE PUMP | | |
| MAX. SPHERE SIZE - 75MM | SPEED 980 rpm | |

SHADED REGION ON THE H-Q CURVE REPRESENTS OPTIMUM SELECTION ZONE

PUMP PERFORMANCE CHARACTERISTICS COMPUTED BASED ON CLEAN COLD WATER S.G 1.0



980 RPM