

NOTE- PERFORMANCE AS PER ISO 9906 GRADE-2B

PERFORMANCE CURVE OF 8SW14 @980 R.P.M

8SW14/X/601356

FISHER PUMP

SW RANGE

MODEL 8SW14

WORKING PRESS. 12 bar

SIZE-250x200-350

TEST PRESS. 18 bar

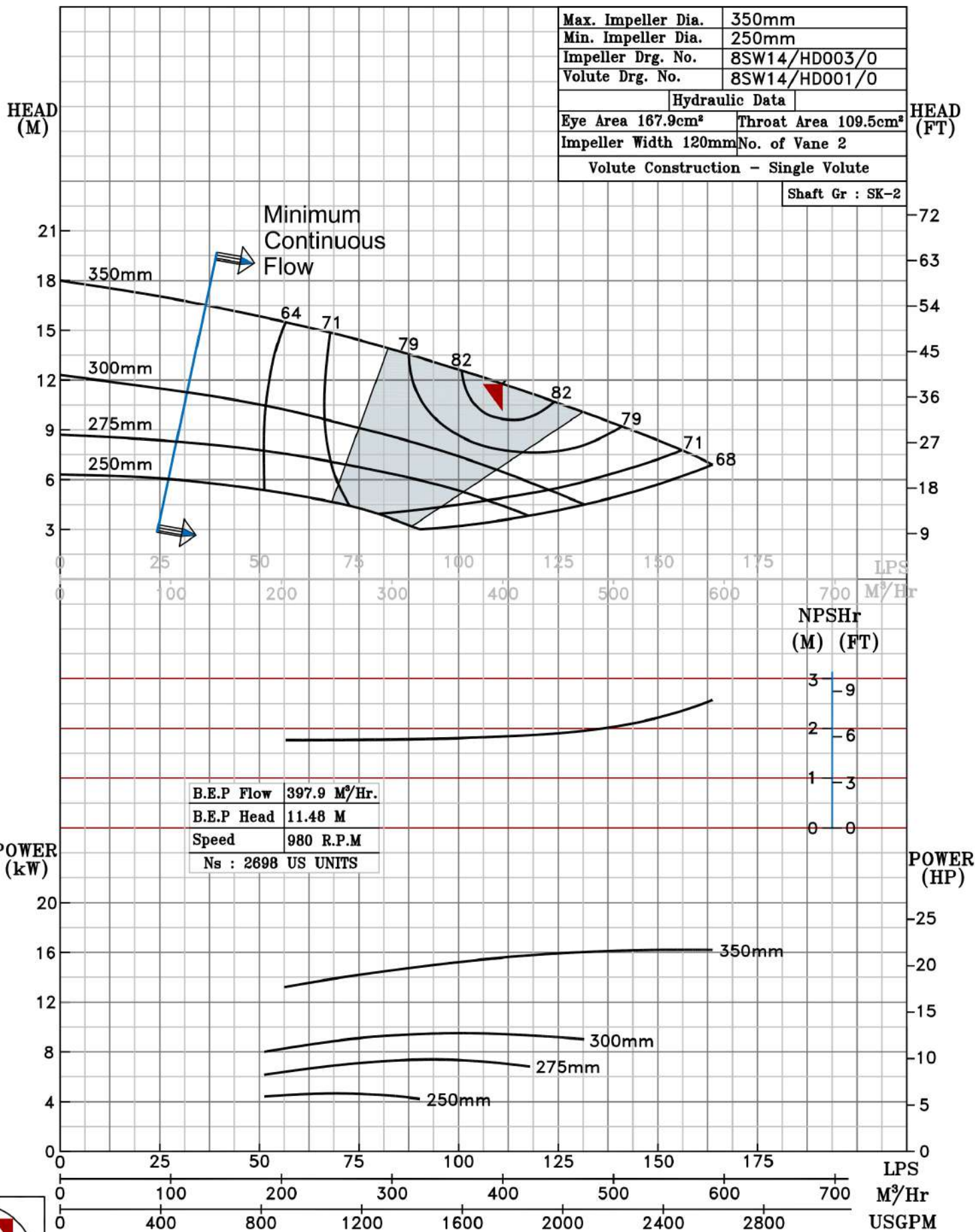
TYPE-DRY PIT NON-CLOG SEWAGE PUMP

MAX. SPHERE SIZE - 75MM

SPEED 980 rpm

SHADED REGION ON THE H-Q CURVE REPRESENTS OPTIMUM SELECTION ZONE

PUMP PERFORMANCE CHARACTERISTICS COMPUTED BASED ON CLEAN COLD WATER S.G 1.0



HEAD (FT)

POWER (HP)

980 RPM

