

NOTE- PERFORMANCE AS PER ISO 9906 GRADE-2B

PERFORMANCE CURVE OF 6SW16 @980 R.P.M

6SW16/X/601156

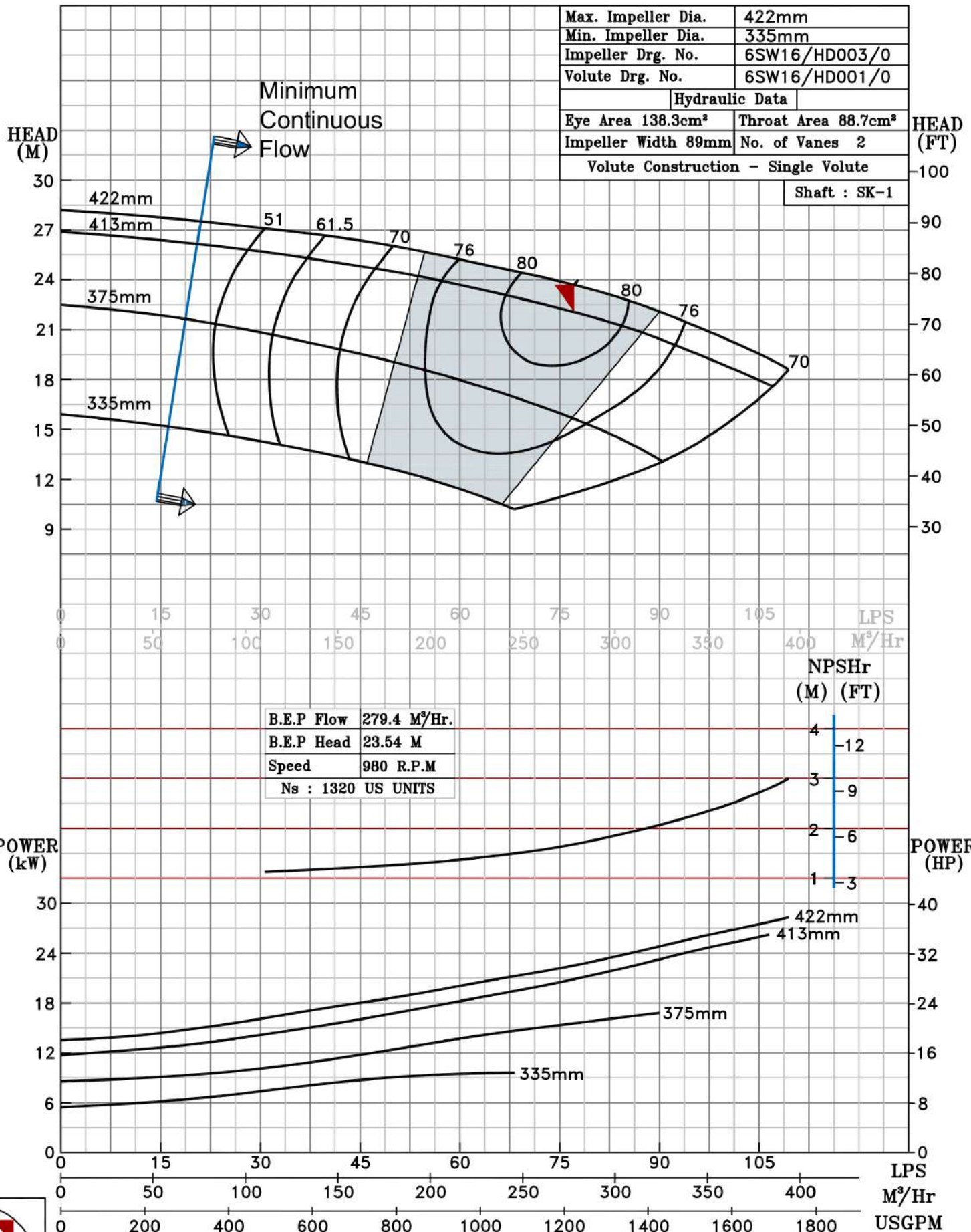
**FISHER PUMP**

SW RANGE

MODEL 6SW16	WORKING PRESS. 12 bar
SIZE 200x150-422	TEST PRESS. 18 bar
TYPE-DRY PIT NON-CLOG SEWAGE PUMP	
MAX. SPHERE SIZE - 50 MM	SPEED 980 rpm

SHADED REGION ON THE H-Q CURVE REPRESENTS OPTIMUM SELECTION ZONE

PUMP PERFORMANCE CHARACTERISTICS COMPUTED BASED ON CLEAN COLD WATER S.G 1.0



980 RPM