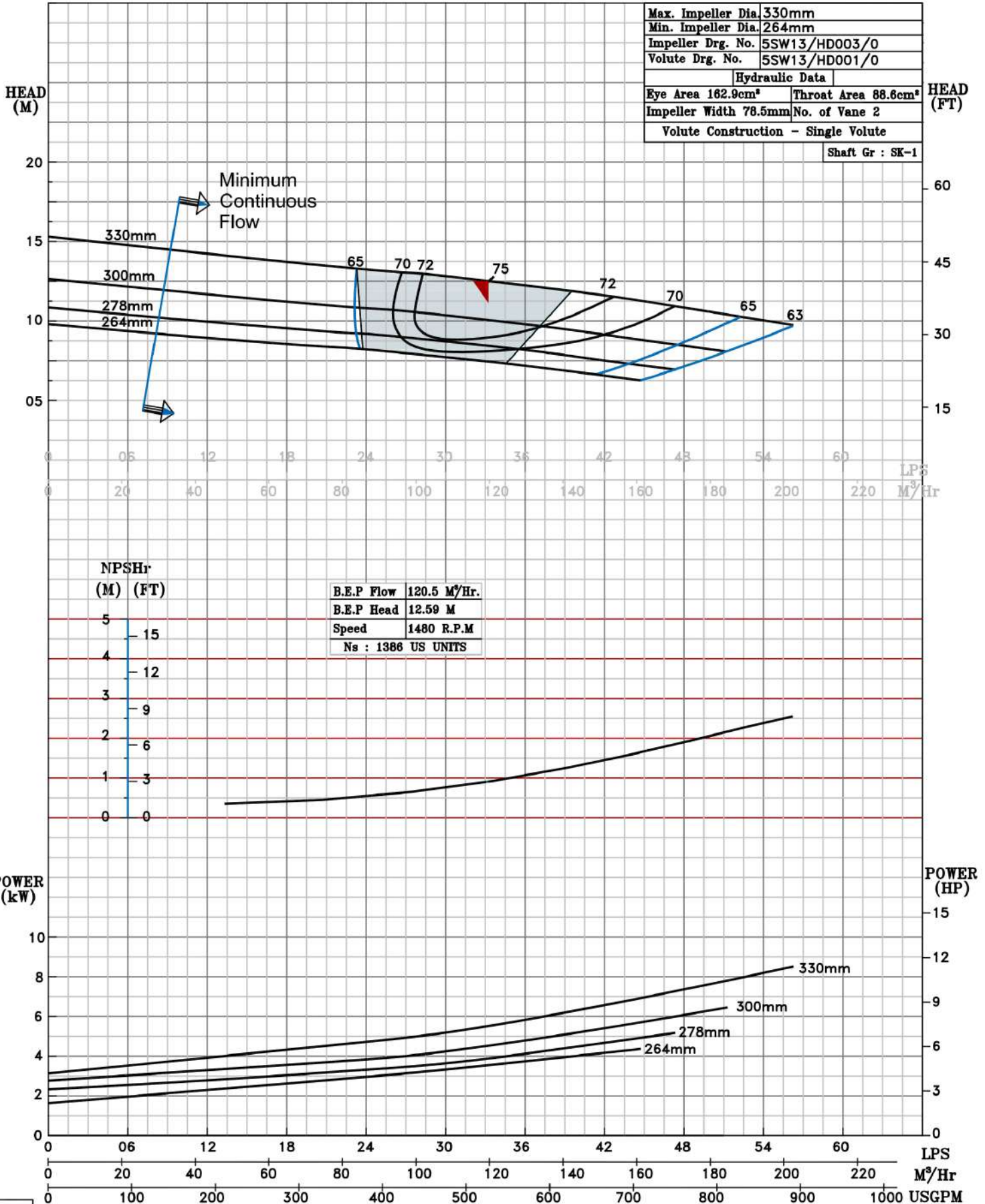


NOTE- PERFORMANCE AS PER ISO 9906 GRADE-2B

PERFORMANCE CURVE OF 5SW13 @980 R.P.M		5SW13/X/600856	
FISHER PUMP	MODEL 5SW13	WORKING PRESS.	12 bar
	SIZE 150x125-330	TEST PRESS.	18 bar
	<i>SW RANGE</i>	TYPE-DRY PIT NON-CLOG SEWAGE PUMP	
	MAX. SPHERE SIZE - 50MM	SPEED 980 rpm	

SHADED REGION ON THE H-Q CURVE REPRESENTS OPTIMUM SELECTION ZONE

PUMP PERFORMANCE CHARACTERISTICS COMPUTED BASED ON CLEAN COLD WATER S.G 1.0



980 RPM