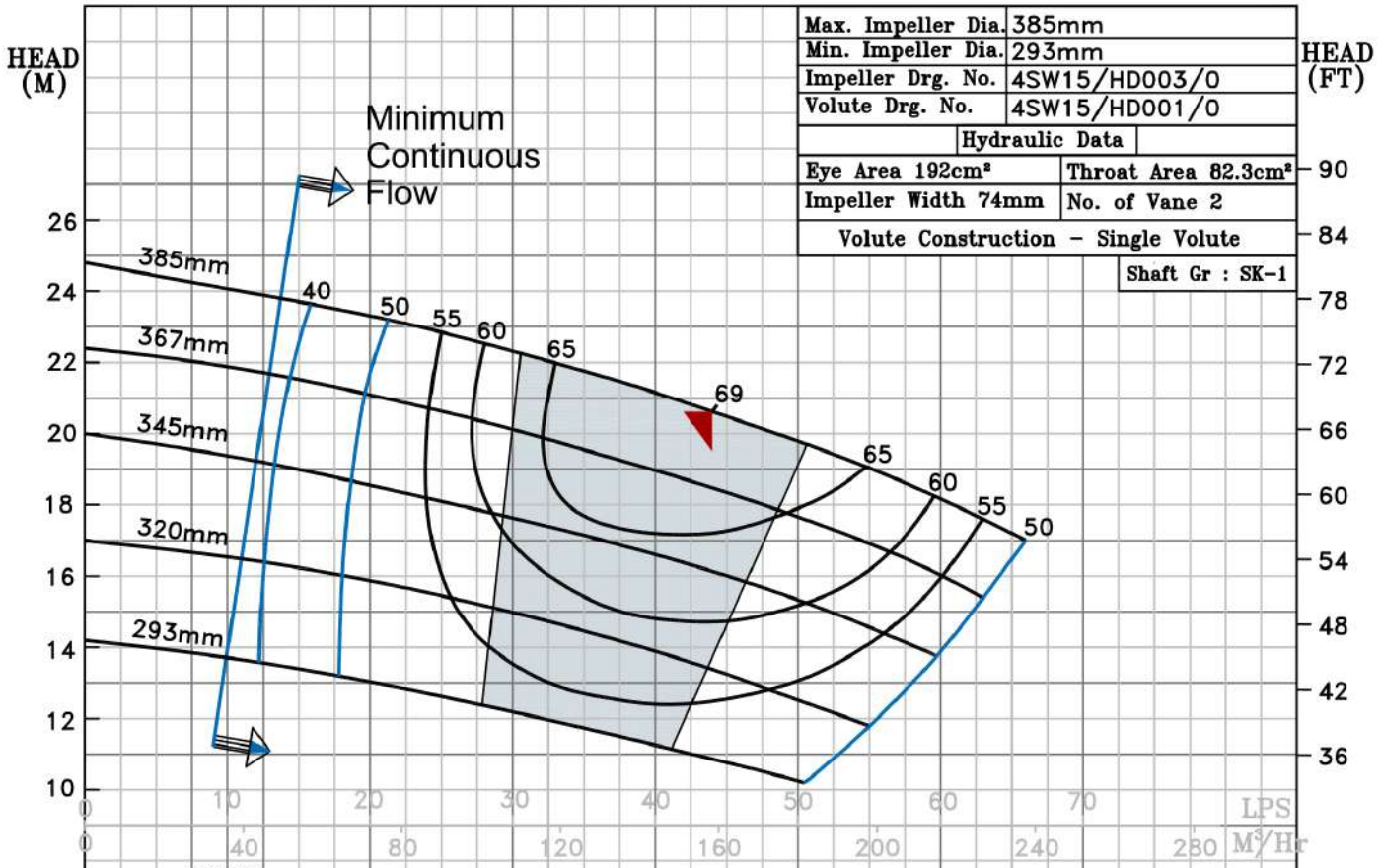


NOTE- PERFORMANCE AS PER ISO 9906 GRADE-2B

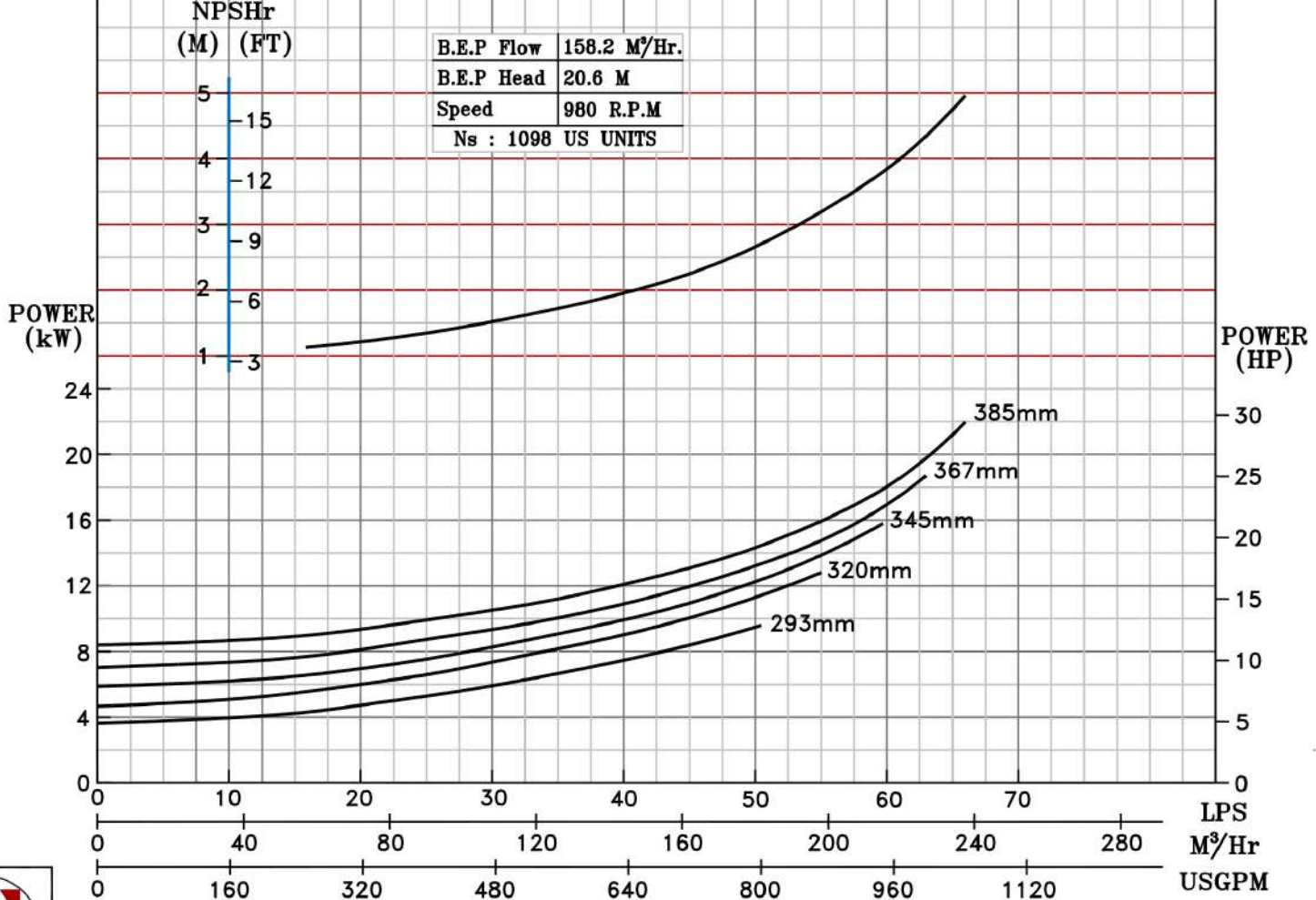
PERFORMANCE CURVE OF 4SW15 @980 R.P.M		4SW15/X/600756
<b>FISHER PUMP</b>	<b>MODEL 4SW15</b>	WORKING PRESS. 12 bar
	SIZE 125x100-385	TEST PRESS. 18 bar
	TYPE-DRY PIT NON-CLOG SEWAGE PUMP	
	MAX. SPHERE SIZE - 50MM	SPEED 980 rpm
<i>SW RANGE</i>		

SHADED REGION ON THE H-Q CURVE REPRESENTS OPTIMUM SELECTION ZONE  
 PUMP PERFORMANCE CHARACTERISTICS COMPUTED BASED ON CLEAN COLD WATER S.G 1.0

Max. Impeller Dia.	385mm
Min. Impeller Dia.	293mm
Impeller Drg. No.	4SW15/HD003/0
Volute Drg. No.	4SW15/HD001/0
Hydraulic Data	
Eye Area 192cm <sup>2</sup>	Throat Area 82.3cm <sup>2</sup>
Impeller Width 74mm	No. of Vane 2
Volute Construction - Single Volute	
Shaft Gr : SK-1	



B.E.P Flow	158.2 M <sup>3</sup> /Hr.
B.E.P Head	20.6 M
Speed	980 R.P.M
Ns	1098 US UNITS



980 RPM