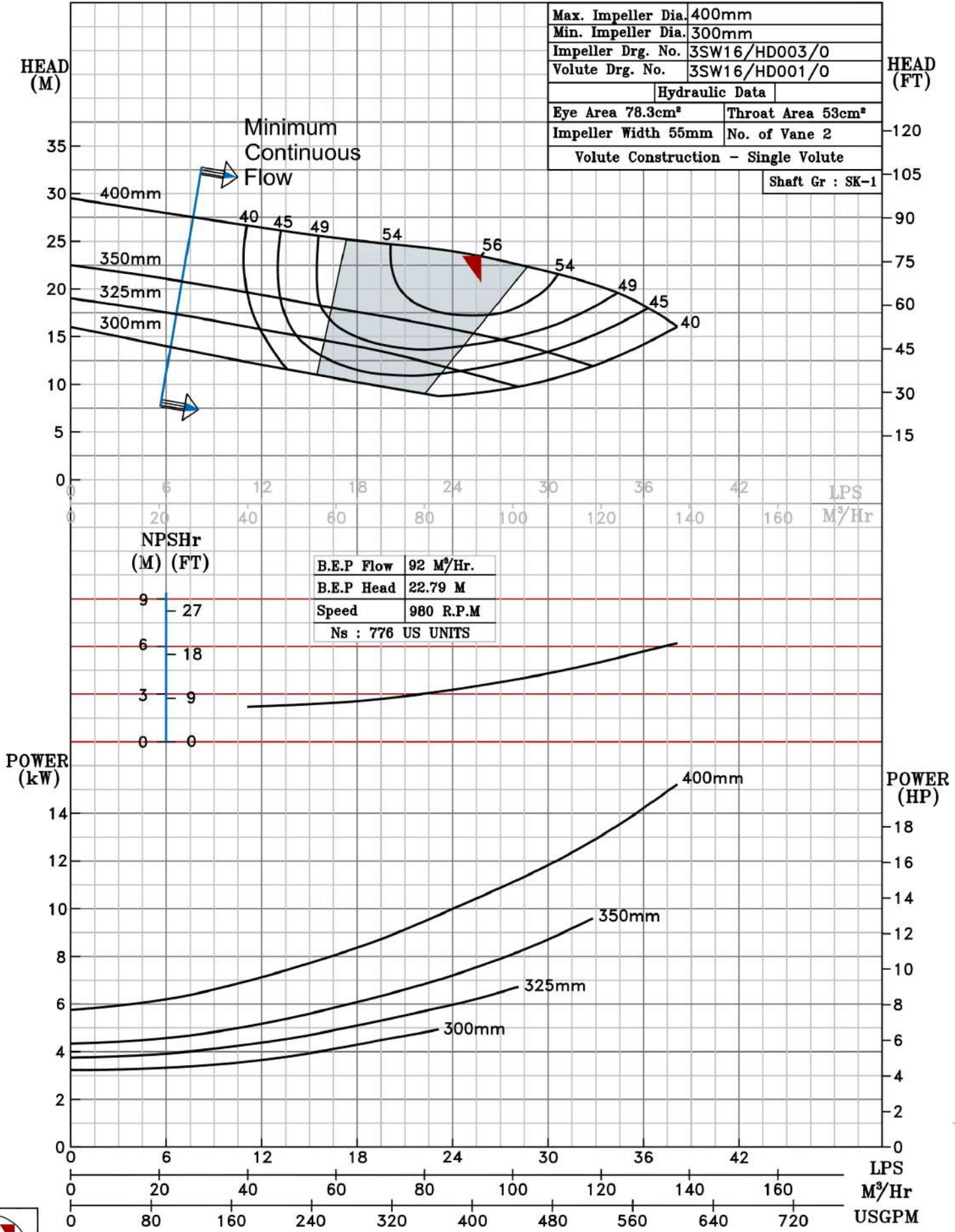


NOTE- PERFORMANCE AS PER ISO 9906 GRADE-2B

PERFORMANCE CURVE OF 3SW16 @980 R.P.M		3SW16/X/600456	
FISHER PUMP	MODEL 3SW16	WORKING PRESS.	12 bar
	SIZE 100x80-400	TEST PRESS.	18 bar
	TYPE-DRY PIT NON-CLOG SEWAGE PUMP		
	MAX. SPHERE SIZE - 30MM	SPEED 980 rpm	
<i>SW RANGE</i>			

SHADED REGION ON THE H-Q CURVE REPRESENTS OPTIMUM SELECTION ZONE
 PUMP PERFORMANCE CHARACTERISTICS COMPUTED BASED ON CLEAN COLD WATER S.G 1.0

Max. Impeller Dia.	400mm
Min. Impeller Dia.	300mm
Impeller Drg. No.	3SW16/HD003/0
Volute Drg. No.	3SW16/HD001/0
Hydraulic Data	
Eye Area 78.3cm ²	Throat Area 53cm ²
Impeller Width 55mm	No. of Vane 2
Volute Construction - Single Volute	
Shaft Gr : SK-1	



980 RPM