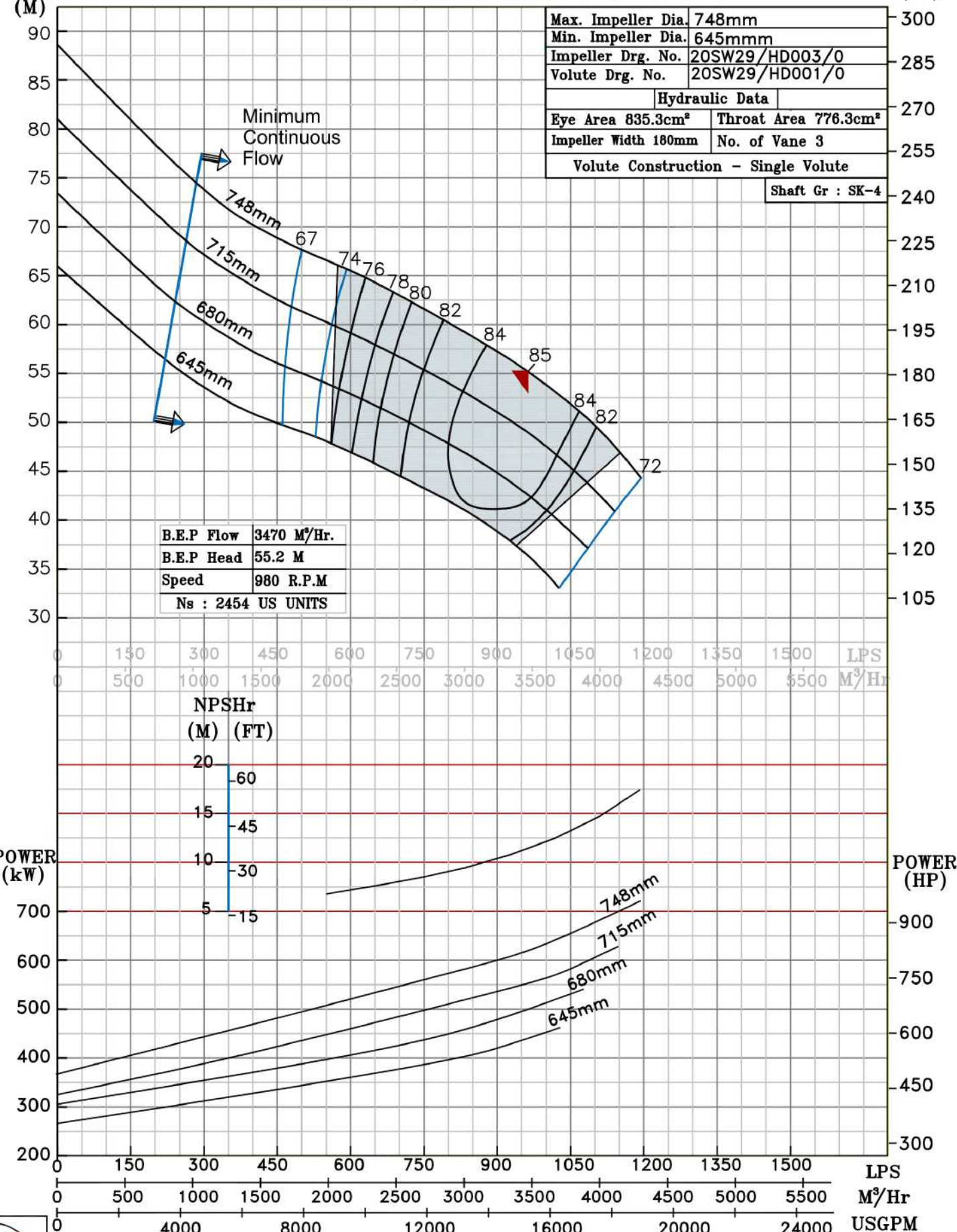


NOTE- PERFORMANCE AS PER ISO 9906 GRADE-2B

<b>PERFORMANCE CURVE OF 20SW29 @980 R.P.M</b>		20SW29/X/603956	
<b>FISHER PUMP</b>	<b>MODEL 20SW29</b>	WORKING PRESS	12 bar
	SIZE 600x500-748	TEST PRESS.	18 bar
	TYPE-DRY PIT NON-CLOG SEWAGE PUMP		
	MAX. SPHERE SIZE - 130MM	SPEED 980 rpm	
<i>SW RANGE</i>			

SHADED REGION ON THE H-Q CURVE REPRESENTS OPTIMUM SELECTION ZONE

PUMP PERFORMANCE CHARACTERISTICS COMPUTED BASED ON CLEAN COLD WATER S.G 1.0



980 RPM