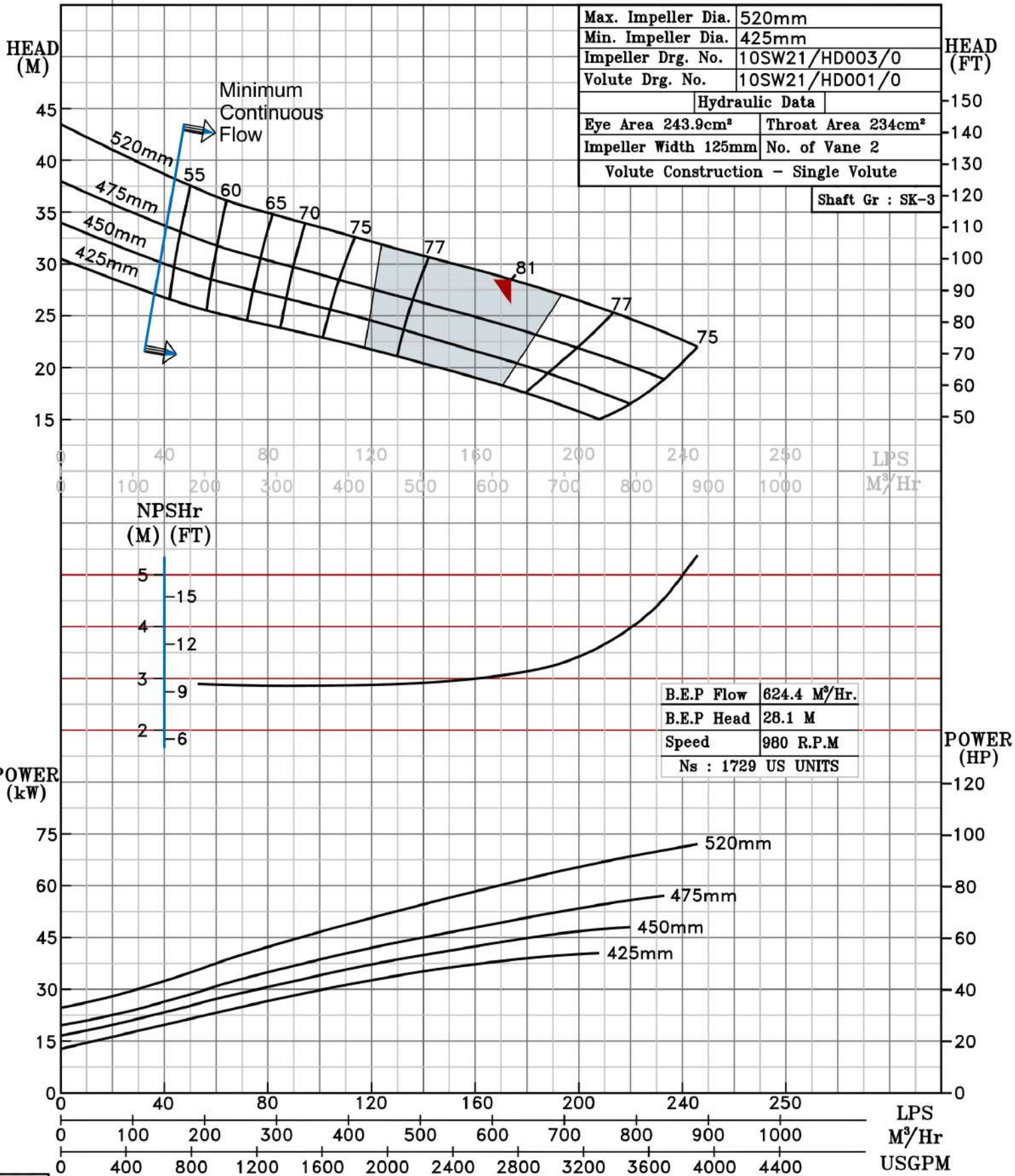


NOTE- PERFORMANCE AS PER ISO 9906 GRADE-2B

PERFORMANCE CURVE OF 10SW21 @980 R.P.M		10SW21/X/602556	
FISHER PUMP	MODEL 10SW21	WORKING PRESS.	12 bar
	SIZE 300x250-520	TEST PRESS.	18 bar
	SW RANGE	TYPE-DRY PIT NON-CLOG SEWAGE PUMP	
	MAX. SPHERE SIZE - 100MM	SPEED 980 rpm	

SHADED REGION ON THE H-Q CURVE REPRESENTS OPTIMUM SELECTION ZONE

PUMP PERFORMANCE CHARACTERISTICS COMPUTED BASED ON CLEAN COLD WATER S.G 1.0



980 RPM