

NOTE- PERFORMANCE AS PER ISO 9906 GRADE-2B

PERFORMANCE CURVE OF 8SW25 @1480 R.P.M

8SW25/X/602154

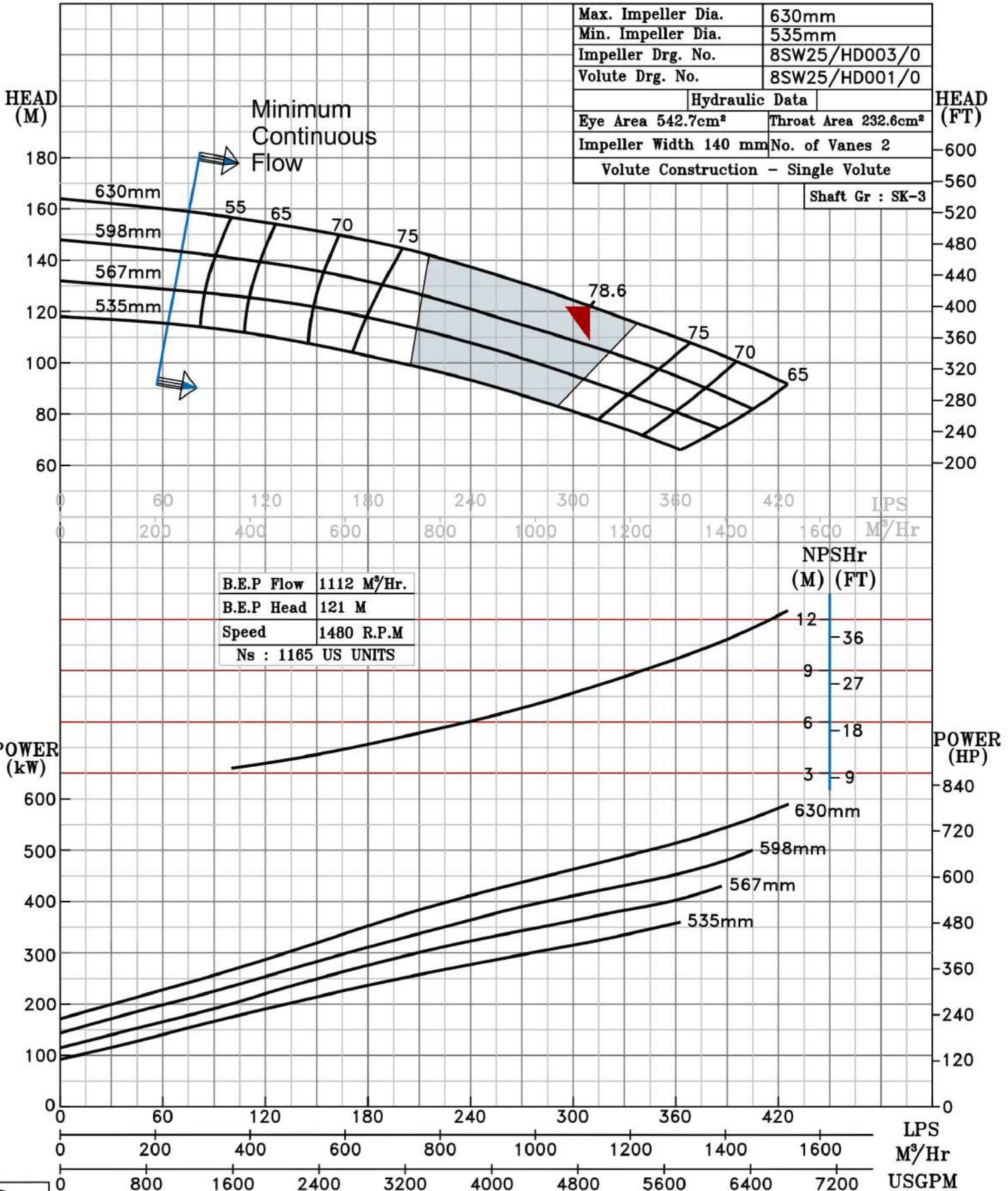
FISHER PUMP

SW RANGE

MODEL 8SW25	WORKING PRESS. 16 bar
SIZE 250x200-630	TEST PRESS. 24 bar
TYPE-DRY PIT NON-CLOG SEWAGE PUMP	
MAX. SPHERE SIZE - 90MM	SPEED 1480 rpm

SHADED REGION ON THE H-Q CURVE REPRESENTS OPTIMUM SELECTION ZONE

PUMP PERFORMANCE CHARACTERISTICS COMPUTED BASED ON CLEAN COLD WATER S.G 1.0



1480 RPM