

NOTE- PERFORMANCE AS PER ISO 9906 GRADE-2B

PERFORMANCE CURVE OF 6SW16 @1480 R.P.M

6SW16/X/601154

**FISHER PUMP**

SW RANGE

MODEL 6SW16

WORKING PRESS. 12 bar

SIZE 200x150-422

TEST PRESS. 18 bar

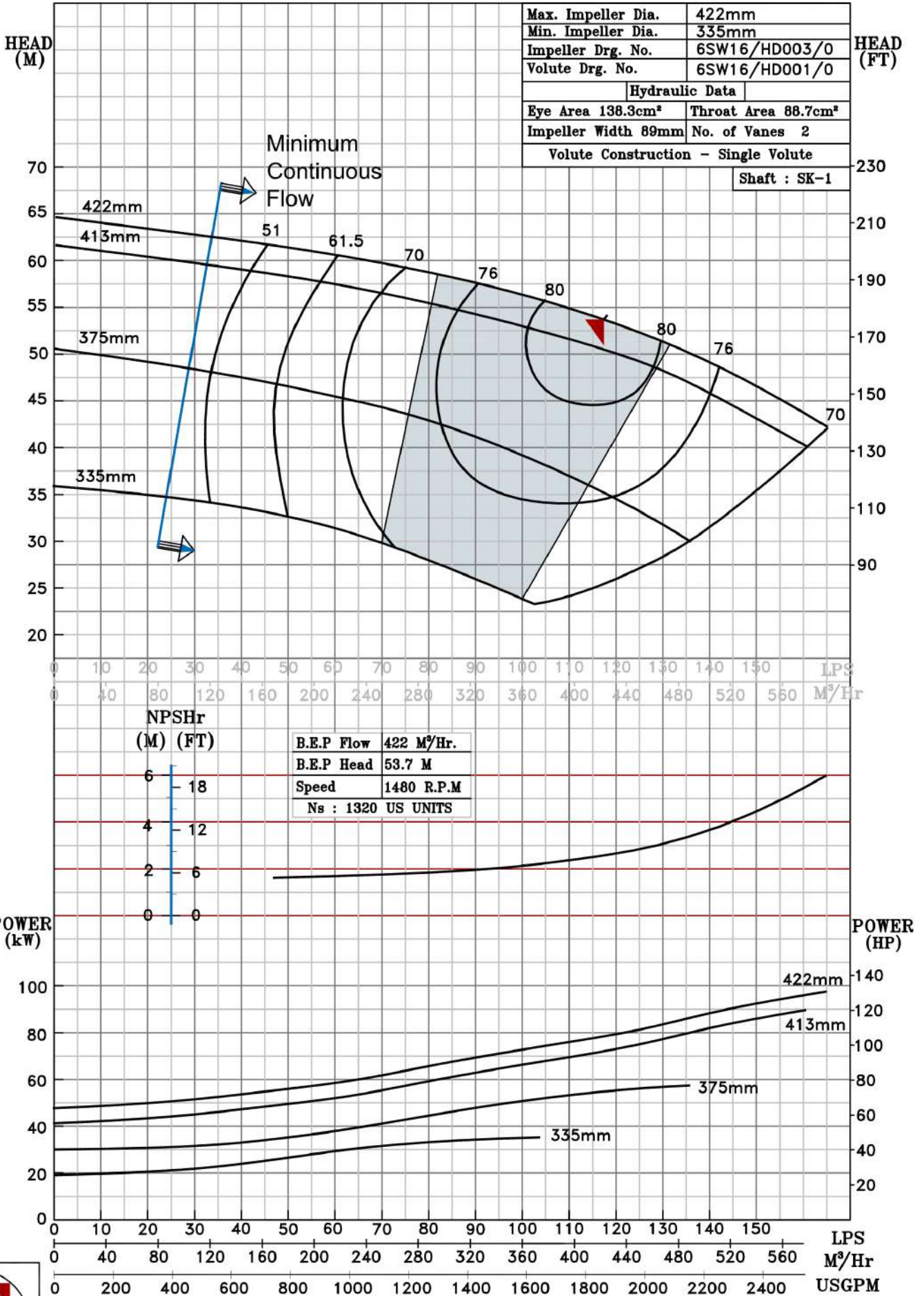
TYPE-DRY PIT NON-CLOG SEWAGE PUMP

MAX. SPHERE SIZE - 50 MM

SPEED 1480 rpm

SHADED REGION ON THE H-Q CURVE REPRESENTS OPTIMUM SELECTION ZONE

PUMP PERFORMANCE CHARACTERISTICS COMPUTED BASED ON CLEAN COLD WATER S.G 1.0



1480 RPM