

NOTE- PERFORMANCE AS PER ISO 9906 GRADE-2B

PERFORMANCE CURVE OF 3SW9 @1480 R.P.M

3SW9/X/600254

**FISHER PUMP**

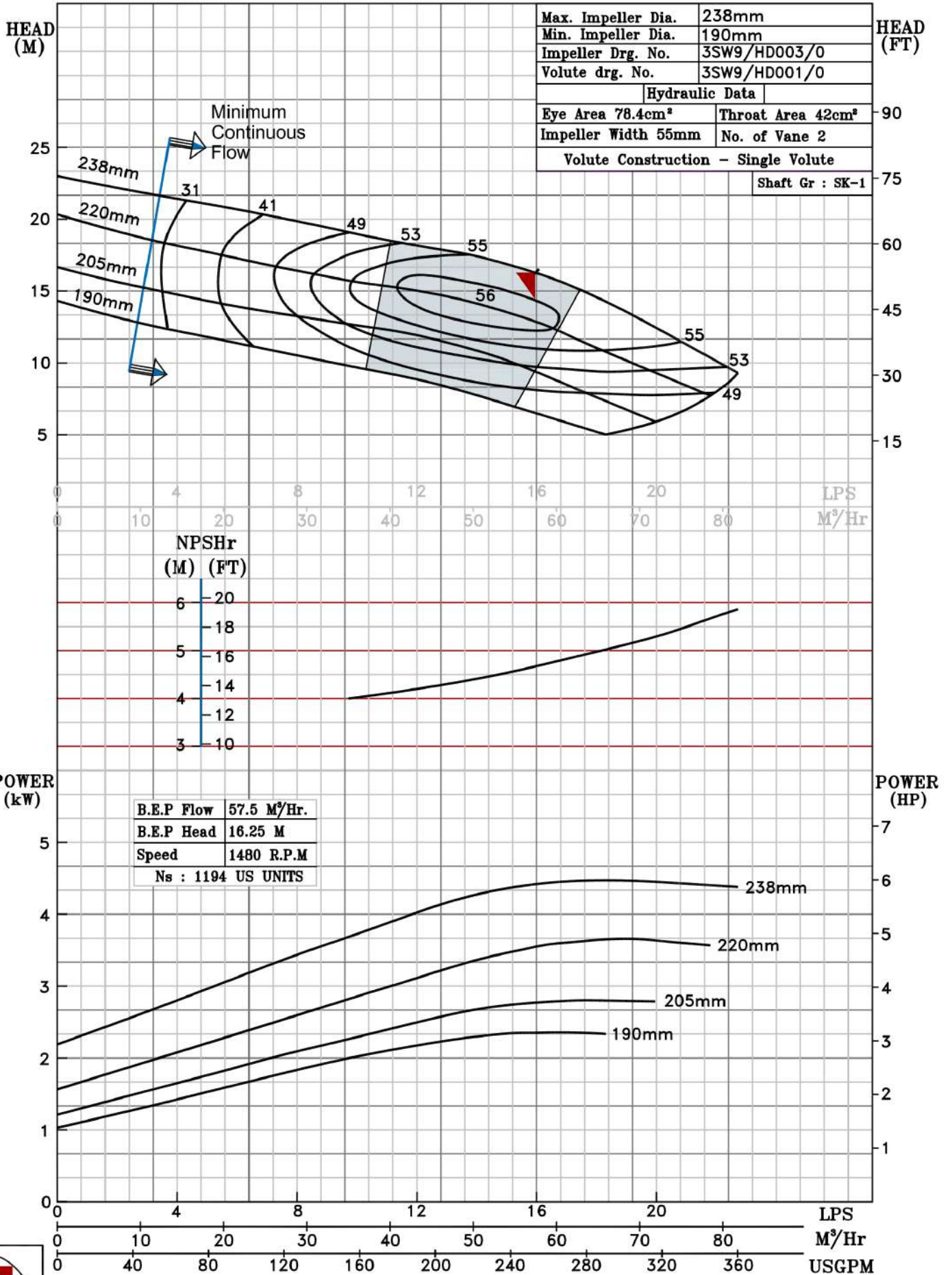
SW RANGE

MODEL 3SW9	WORKING PRESS	12 bar
SIZE 100x80-238	TEST PRESS.	18 bar
TYPE-DRY PIT NON-CLOG SEWAGE PUMP		
MAX. SPHERE SIZE - 30MM	SPEED	1480 rpm

SHADED REGION ON THE H-Q CURVE REPRESENTS OPTIMUM SELECTION ZONE

PUMP PERFORMANCE CHARACTERISTICS COMPUTED BASED ON CLEAN COLD WATER S.G 1.0

Max. Impeller Dia.	238mm
Min. Impeller Dia.	190mm
Impeller Drg. No.	3SW9/HD003/0
Volute drg. No.	3SW9/HD001/0
Hydraulic Data	
Eye Area 78.4cm <sup>2</sup>	Throat Area 42cm <sup>2</sup>
Impeller Width 55mm	No. of Vane 2
Volute Construction - Single Volute	
Shaft Gr : SK-1	



1480 RPM