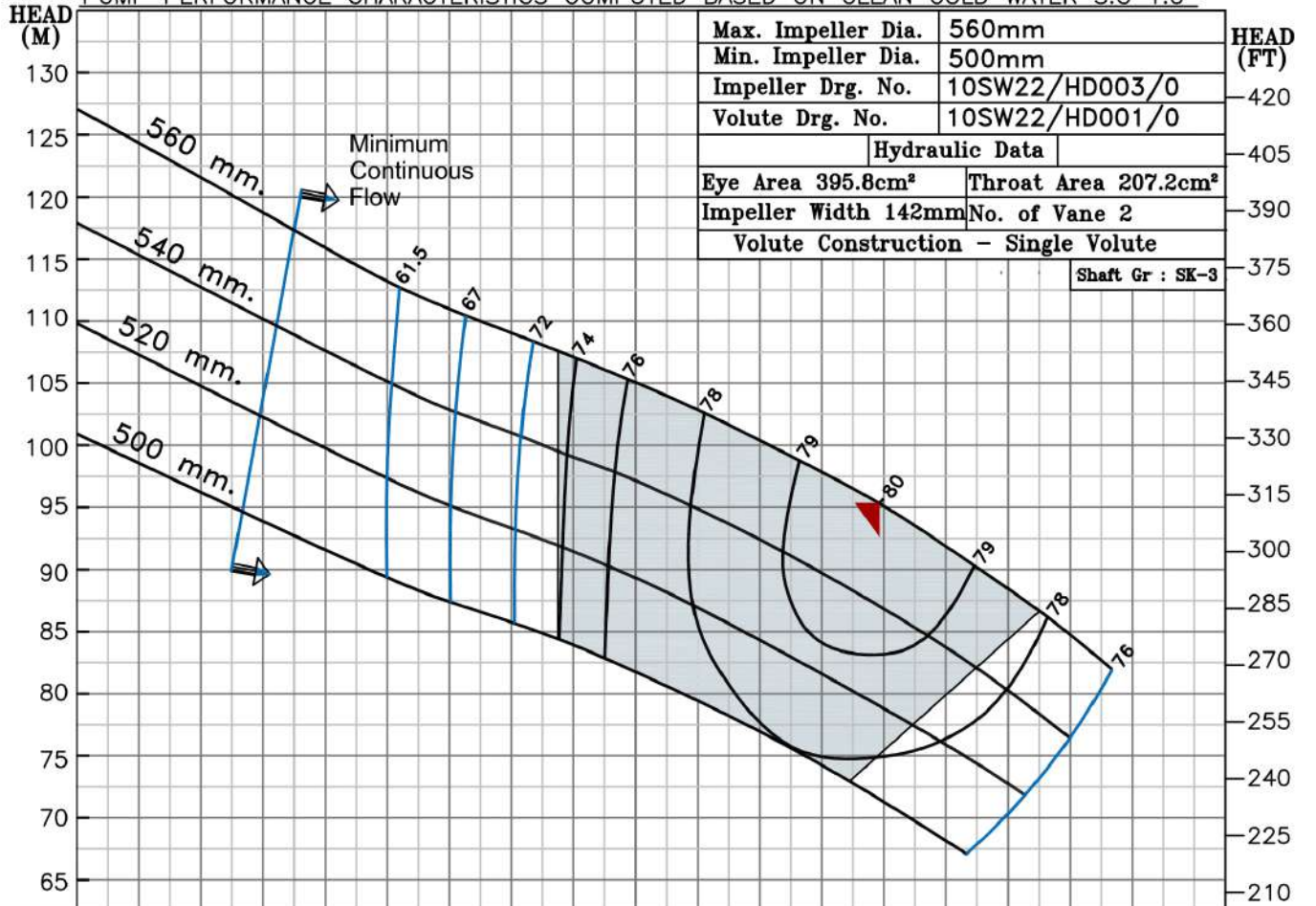


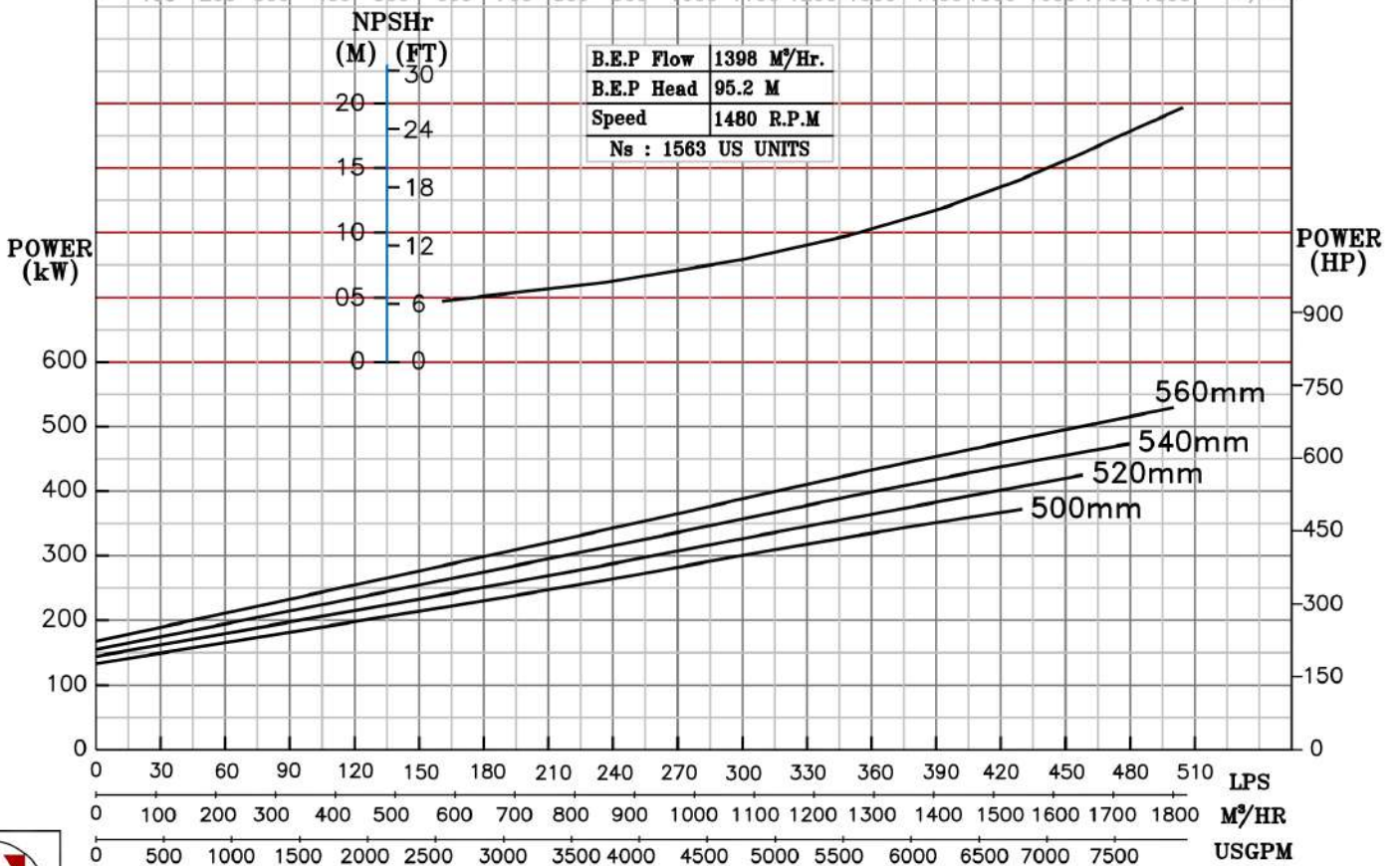
NOTE- PERFORMANCE AS PER ISO 9906 GRADE-2B

| | | | |
|--|--------------------------|-----------------------------------|--------|
| PERFORMANCE CURVE OF 10SW22 @1480 R.P.M | | 10SW22/X/602654 | |
| FISHER PUMP | MODEL 10SW22 | WORKING PRESS. | 16 bar |
| | SIZE 300x250-560 | TEST PRESS. | 24 bar |
| | SW RANGE | TYPE-DRY PIT NON-CLOG SEWAGE PUMP | |
| | MAX. SPHERE SIZE - 100MM | SPEED 1480 rpm | |

SHADED REGION ON THE H-Q CURVE REPRESENTS OPTIMUM SELECTION ZONE
 PUMP PERFORMANCE CHARACTERISTICS COMPUTED BASED ON CLEAN COLD WATER S.G 1.0



| | |
|-------------------------------------|----------------------|
| Max. Impeller Dia. | 560mm |
| Min. Impeller Dia. | 500mm |
| Impeller Drg. No. | 10SW22/HD003/0 |
| Volute Drg. No. | 10SW22/HD001/0 |
| Hydraulic Data | |
| Eye Area 395.8cm² | Throat Area 207.2cm² |
| Impeller Width 142mm | No. of Vane 2 |
| Volute Construction - Single Volute | |
| Shaft Gr : SK-3 | |



1480 RPM