

NOTE- PERFORMANCE AS PER ISO 9906 GRADE-2B

PERFORMANCE CURVE OF 4SW15 @980 R.P.M

4SW15/X/600756

FISHER PUMP

SW RANGE

MODEL 4SW15

WORKING PRESS. 12 bar

SIZE 125x100-385

TEST PRESS. 18 bar

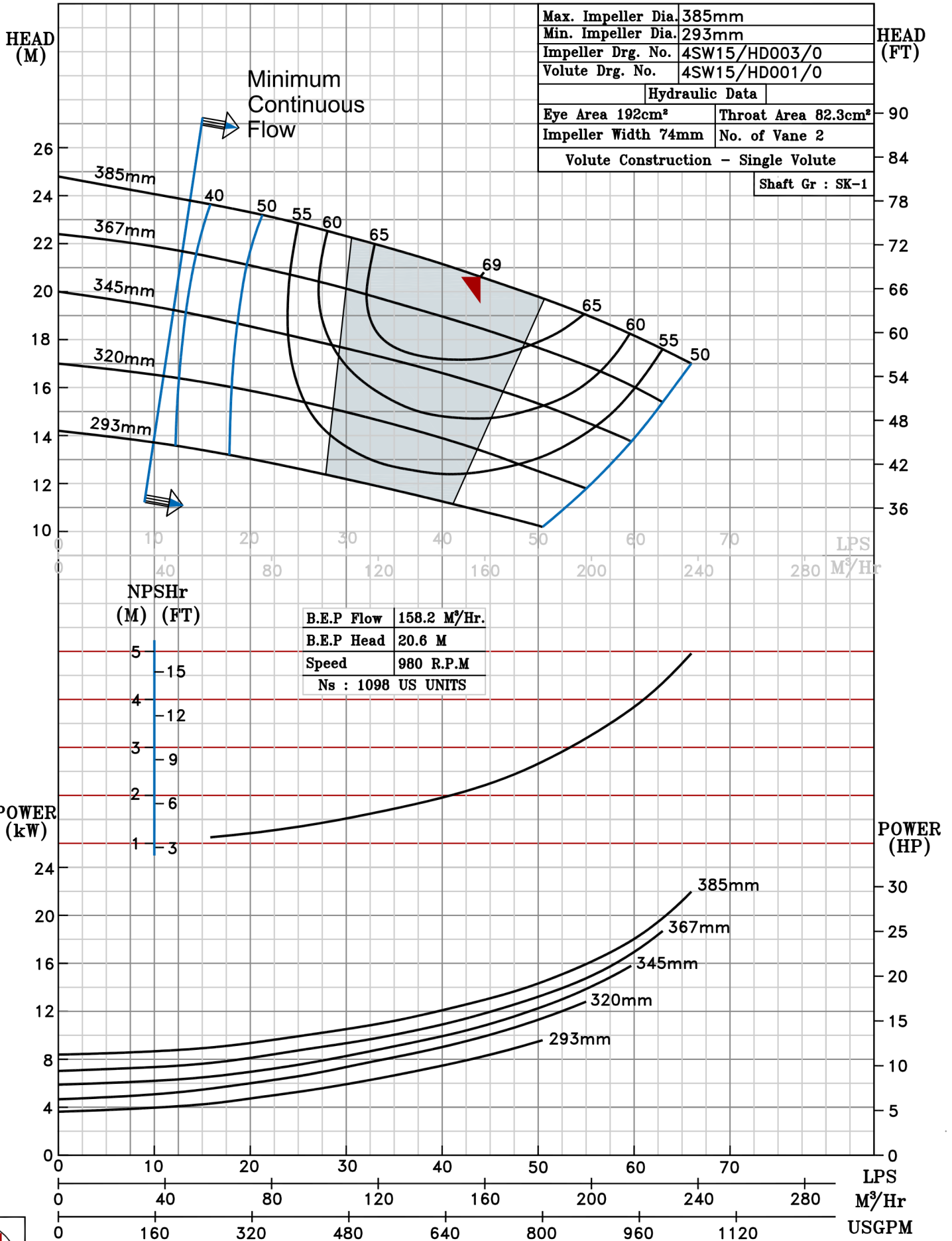
TYPE-DRY PIT NON-CLOG SEWAGE PUMP

MAX. SPHERE SIZE - 50MM

SPEED 980 rpm

SHADED REGION ON THE H-Q CURVE REPRESENTS OPTIMUM SELECTION ZONE

PUMP PERFORMANCE CHARACTERISTICS COMPUTED BASED ON CLEAN COLD WATER S.G 1.0



980 RPM