

NOTE- PERFORMANCE AS PER ISO 9906 GRADE-2B

PERFORMANCE CURVE OF 20SW29 @980 R.P.M

20SW29/X/603956

FISHER PUMP

SW RANGE

MODEL 20SW29

WORKING PRESS. 12 bar

SIZE 600x500-748

TEST PRESS. 18 bar

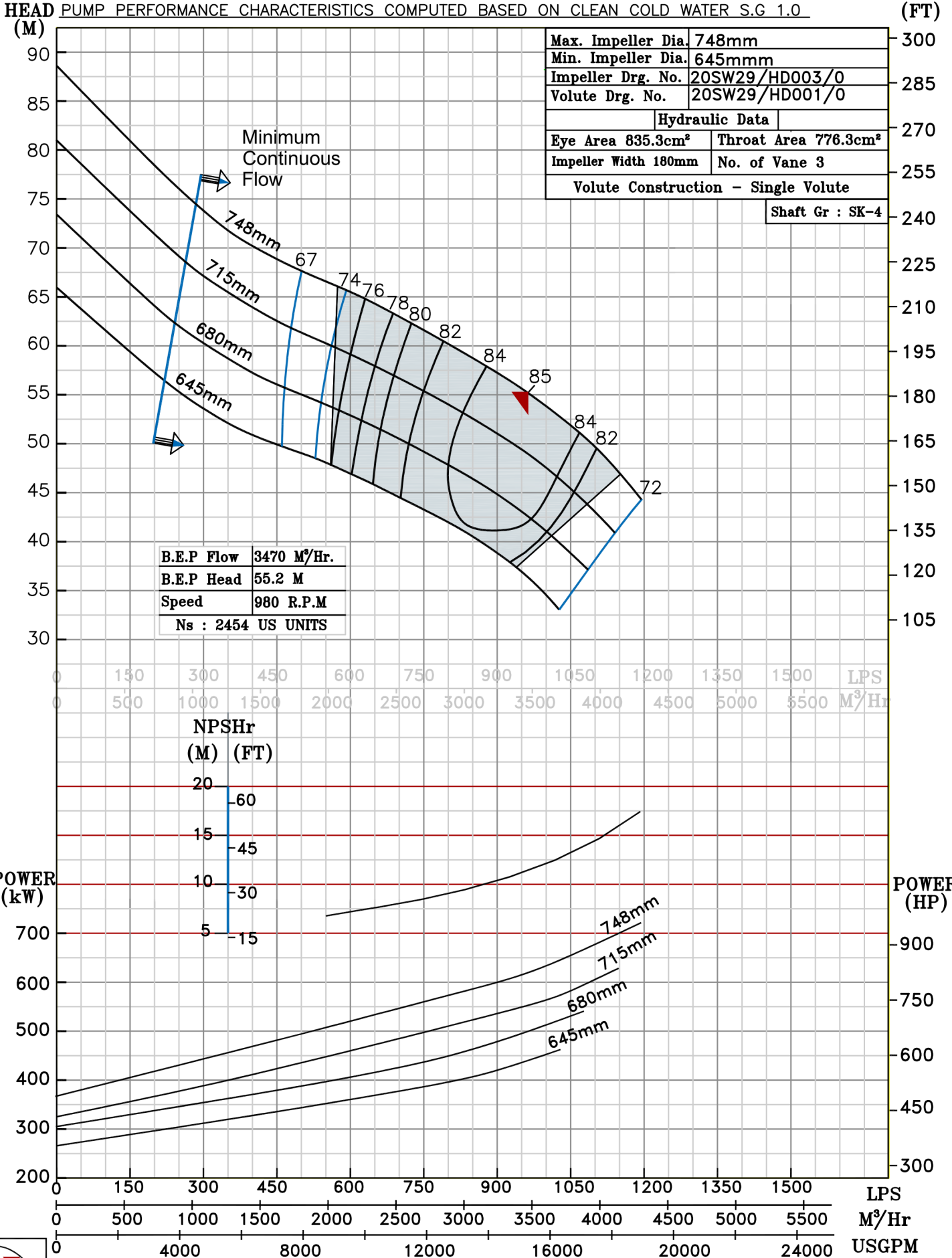
TYPE-DRY PIT NON-CLOG SEWAGE PUMP

MAX. SPHERE SIZE - 130MM

SPEED 980 rpm

SHADED REGION ON THE H-Q CURVE REPRESENTS OPTIMUM SELECTION ZONE

PUMP PERFORMANCE CHARACTERISTICS COMPUTED BASED ON CLEAN COLD WATER S.G 1.0



980 RPM