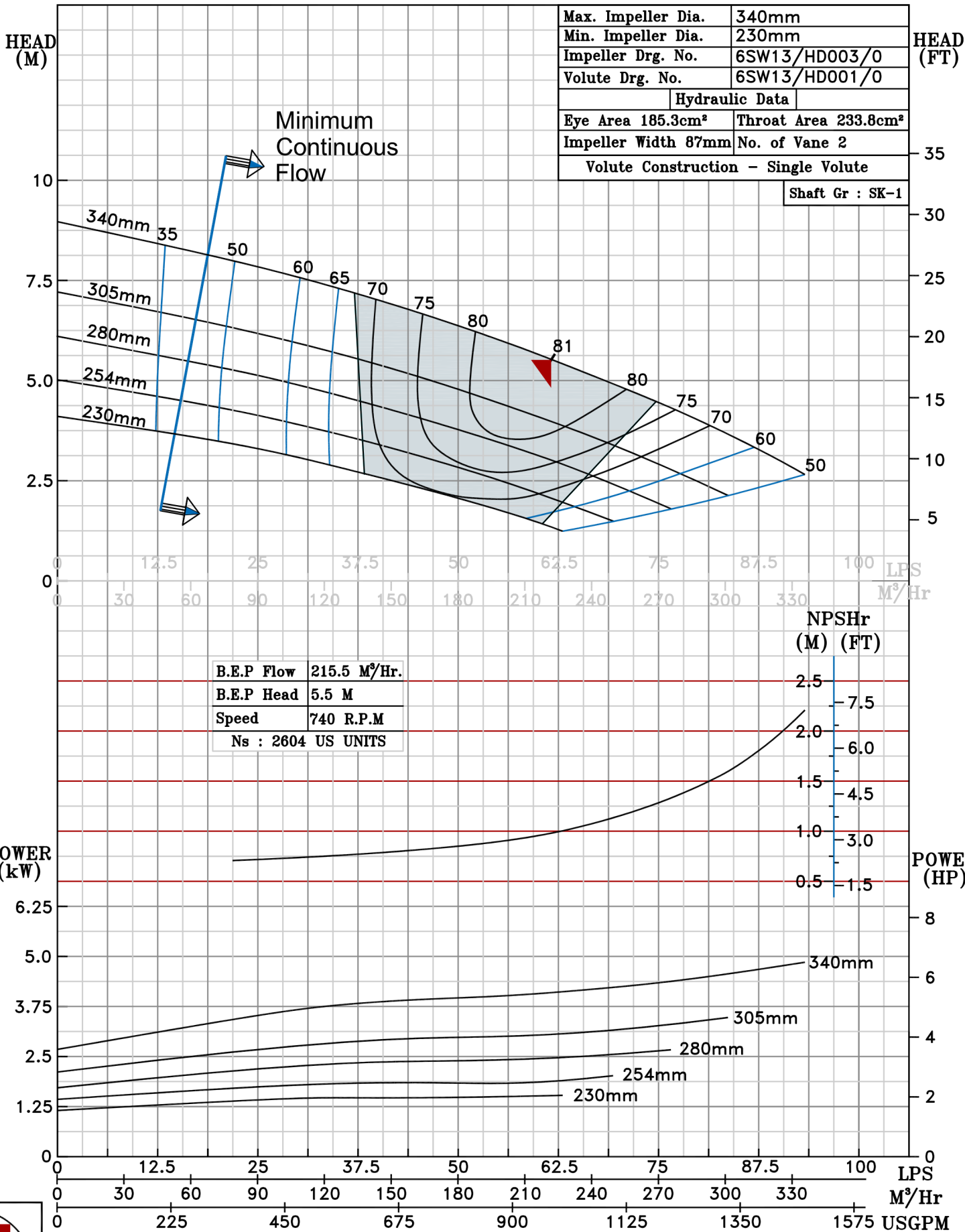


NOTE- PERFORMANCE AS PER ISO 9906 GRADE-2B

<b>PERFORMANCE CURVE OF 6SW13 @740 R.P.M</b>		<b>6SW13/X/601058</b>	
<b>FISHER PUMP</b>	<b>MODEL 6SW13</b>	WORKING PRESS.	12 bar
	SIZE-200x150-340	TEST PRESS.	18 bar
	<b>TYPE-DRY PIT NON-CLOG SEWAGE PUMP</b>		
	MAX. SPHERE SIZE - 50MM	SPEED 740 rpm	
<b>SW RANGE</b>			

SHADED REGION ON THE H-Q CURVE REPRESENTS OPTIMUM SELECTION ZONE  
 PUMP PERFORMANCE CHARACTERISTICS COMPUTED BASED ON CLEAN COLD WATER S.G 1.0



740 RPM