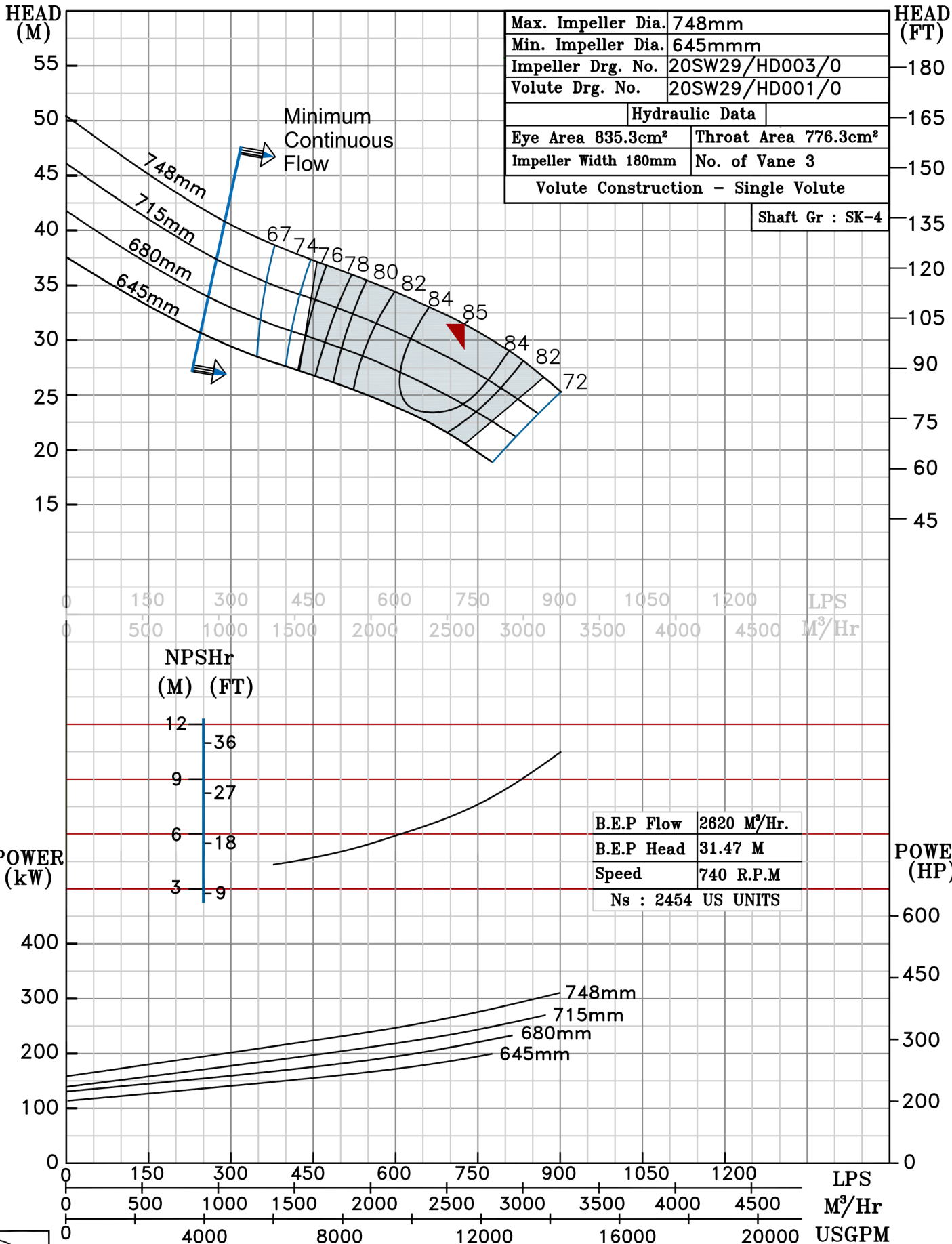


NOTE- PERFORMANCE AS PER ISO 9906 GRADE-2B

PERFORMANCE CURVE OF 20SW29 @740 R.P.M		20SW29/X/603958
FISHER PUMP	MODEL 20SW29	WORKING PRESS. 12 bar
	SIZE 600x500-748	TEST PRESS. 18 bar
	TYPE-DRY PIT NON-CLOG SEWAGE PUMP	
<u>SW RANGE</u>	MAX. SPHERE SIZE - 130MM	SPEED 740 rpm

SHADED REGION ON THE H-Q CURVE REPRESENTS OPTIMUM SELECTION ZONE

PUMP PERFORMANCE CHARACTERISTICS COMPUTED BASED ON CLEAN COLD WATER S.G 1.0



740 RPM