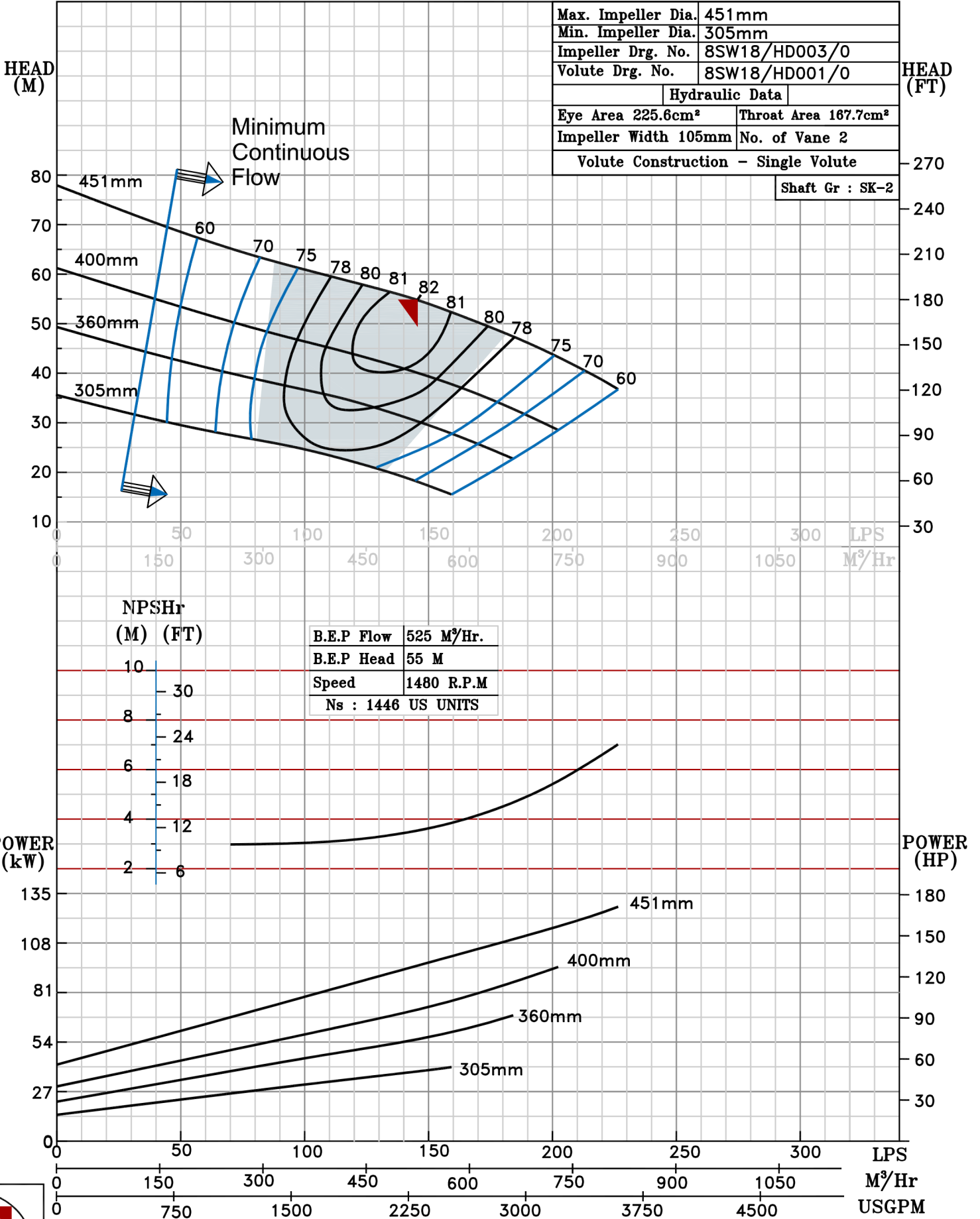


NOTE- PERFORMANCE AS PER ISO 9906 GRADE-2B

PERFORMANCE CURVE OF 8SW18 @1480 R.P.M		8SW18/X/601754	
FISHER PUMP	MODEL 8SW18	WORKING PRESS.	12 bar
	SIZE 250x200-451	TEST PRESS.	18 bar
	TYPE-DRY PIT NON-CLOG SEWAGE PUMP		
<i>SW RANGE</i>		SPHERE SIZE - 75 MM	SPEED 1480 rpm

SHADED REGION ON THE H-Q CURVE REPRESENTS OPTIMUM SELECTION ZONE

PUMP PERFORMANCE CHARACTERISTICS COMPUTED BASED ON CLEAN COLD WATER S.G 1.0



1480 RPM