

NOTE- PERFORMANCE AS PER ISO 9906 GRADE-2B

PERFORMANCE CURVE OF 5SW13 @1480 R.P.M

5SW13/X/600854

**FISHER PUMP**

SW RANGE

MODEL 5SW13

WORKING PRESS. 12 bar

SIZE 150x125-330

TEST PRESS. 18 bar

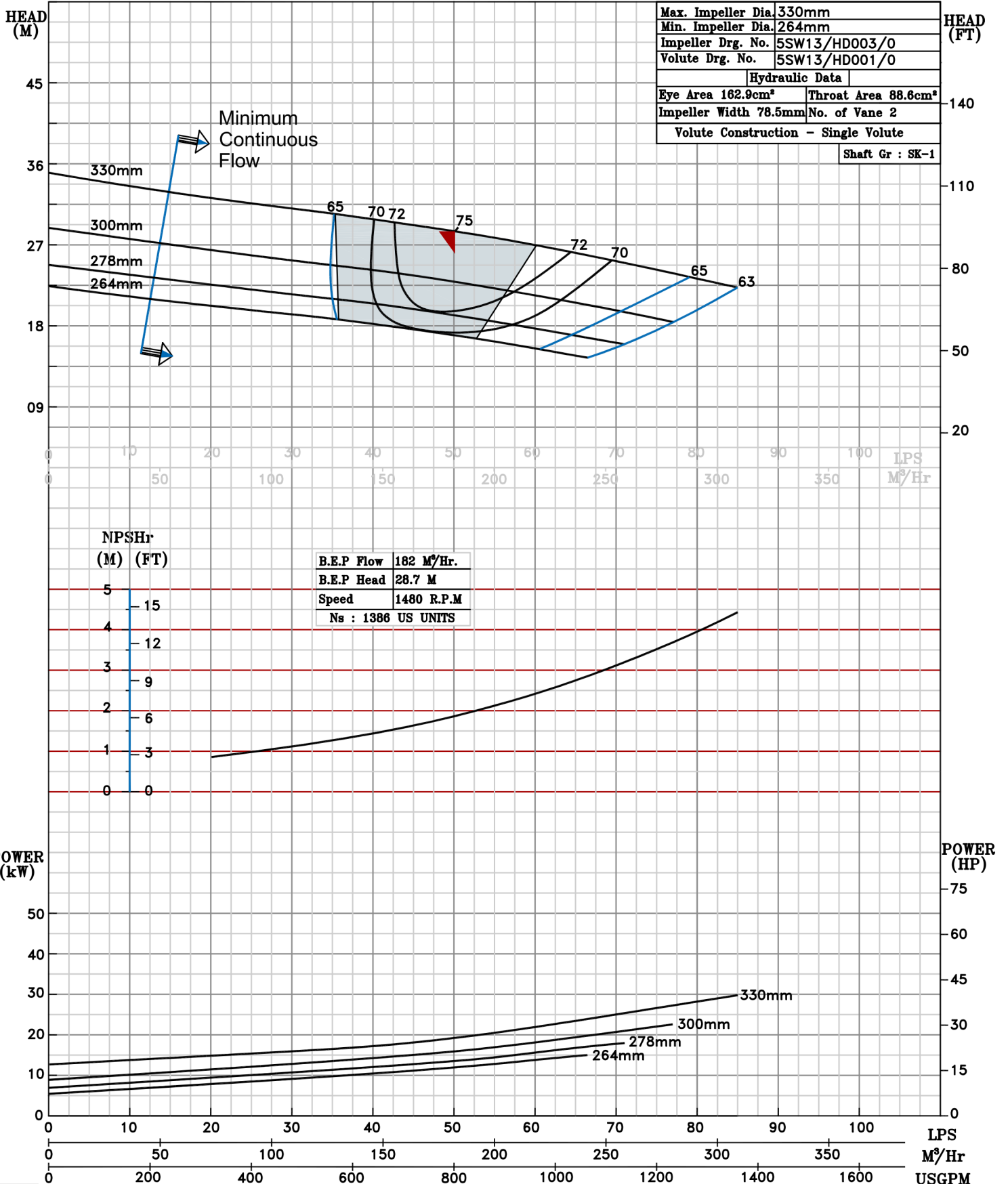
TYPE-DRY PIT NON-CLOG SEWAGE PUMP

MAX. SPHERE SIZE - 50MM

SPEED 1480 rpm

SHADED REGION ON THE H-Q CURVE REPRESENTS OPTIMUM SELECTION ZONE

PUMP PERFORMANCE CHARACTERISTICS COMPUTED BASED ON CLEAN COLD WATER S.G 1.0



1480 RPM