

NOTE- PERFORMANCE AS PER ISO 9906 GRADE-2B

PERFORMANCE CURVE OF 4SW15 @1480 R.P.M

4SW15/X/600754

**FISHER PUMP**

**MODEL 4SW15**

WORKING PRESS. 12 bar

SIZE 125x100-385

TEST PRESS. 18 bar

SW RANGE

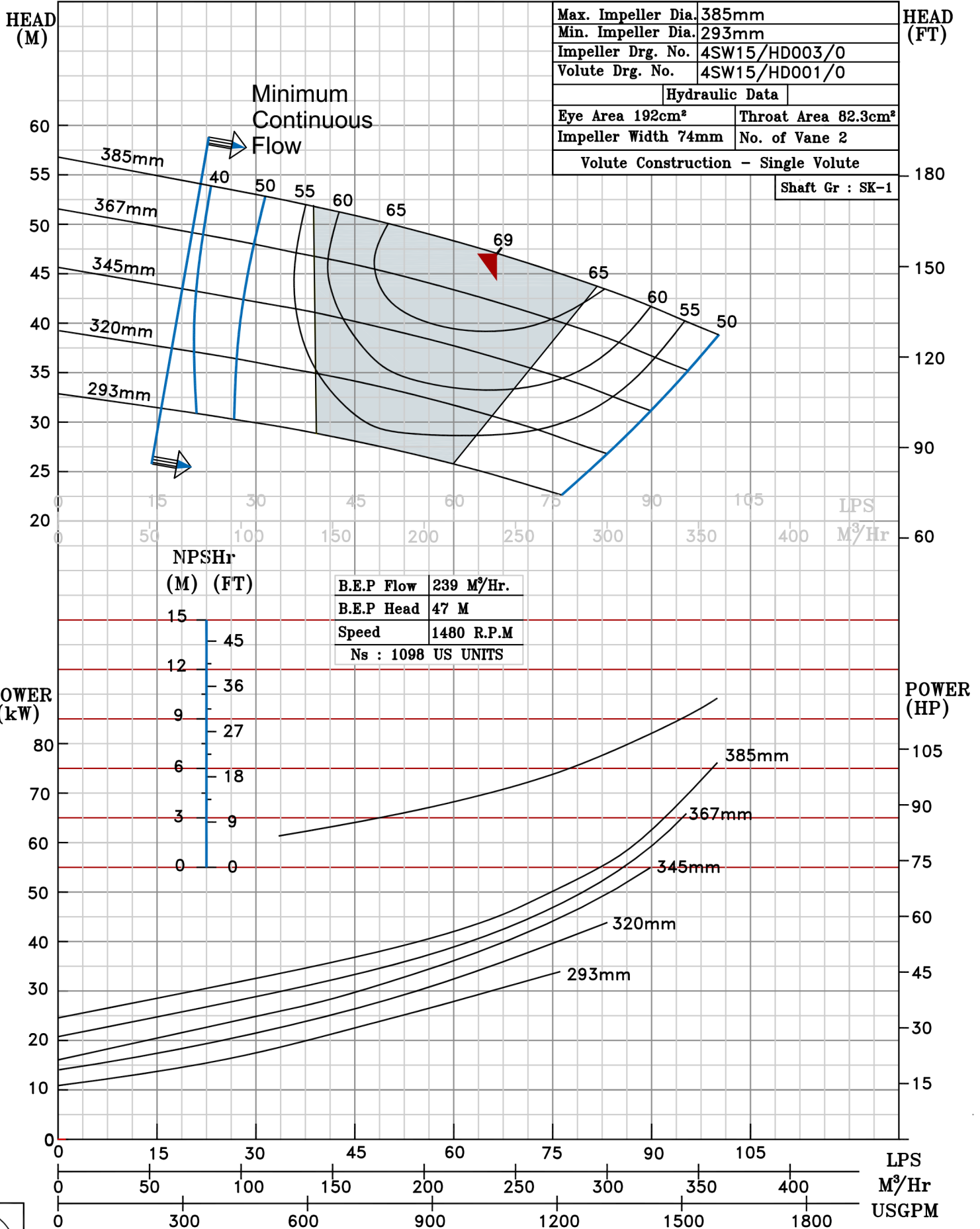
TYPE-DRY PIT NON-CLOG SEWAGE PUMP

MAX. SPHERE SIZE - 50MM

SPEED 1480 rpm

SHADED REGION ON THE H-Q CURVE REPRESENTS OPTIMUM SELECTION ZONE

PUMP PERFORMANCE CHARACTERISTICS COMPUTED BASED ON CLEAN COLD WATER S.G 1.0



1480 RPM