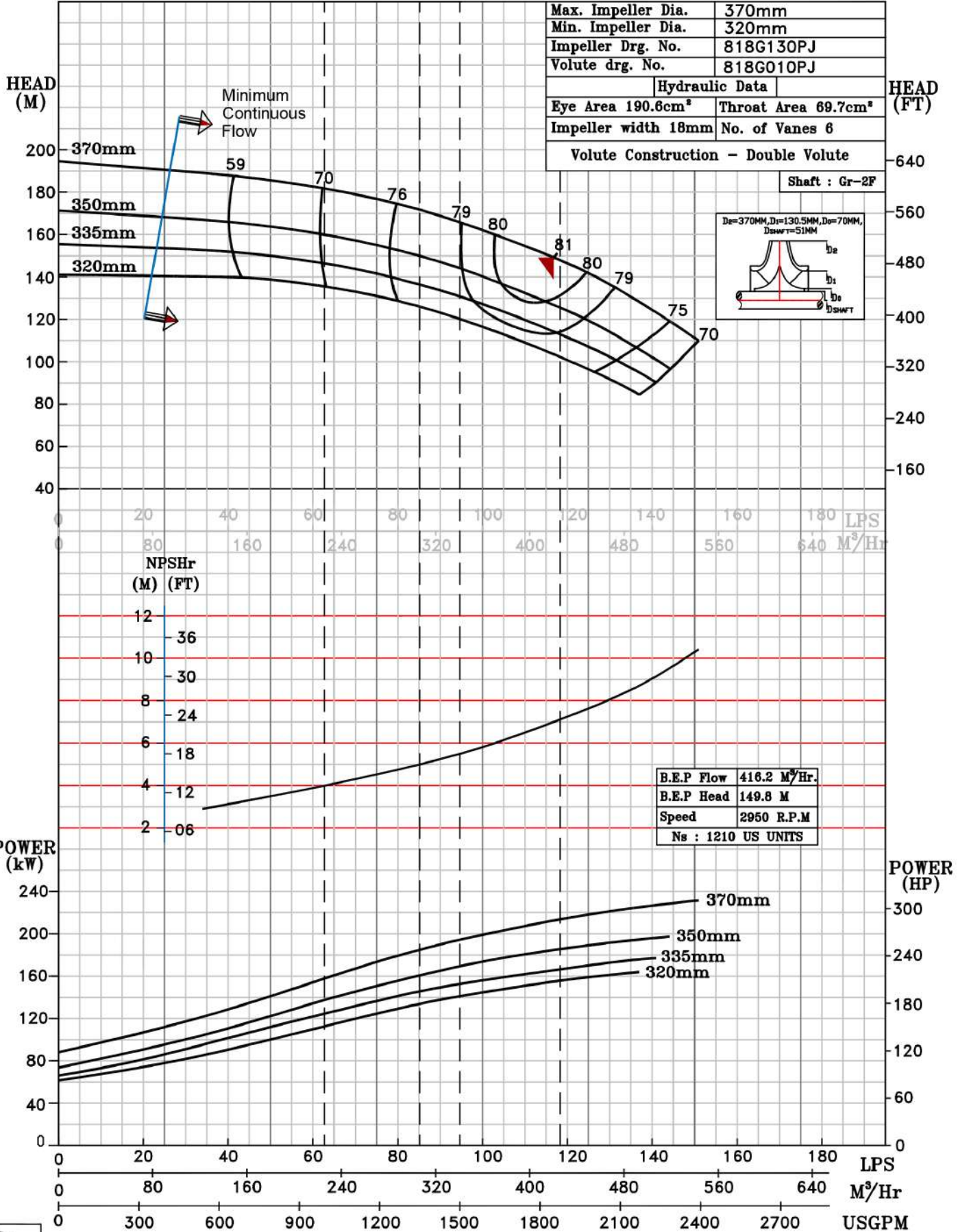


NOTE- PERFORMANCE AS PER ISO 9906 GRADE-2B

<b>PERFORMANCE CURVE OF 6HF15 @2950 R.P.M</b>		6HF15/Y/801852	
<b>FISHER PUMP</b>	<b>MODEL 6HF15</b>	WORKING PRESS.	20 bar
	SIZE 200x150-370	TEST PRESS.	30 bar
	TYPE - SPLIT CASE SINGLE STAGE		
<b>RATED CAPACITY: 1000,1250 USGPM</b>		<b>SPEED 2950 rpm</b>	
<b>HF RANGE</b>		DATE - 16.10.17	

PUMP PERFORMANCE CHARACTERISTICS COMPUTED BASED ON CLEAN COLD WATER S.G 1.0

Max. Impeller Dia.	370mm
Min. Impeller Dia.	320mm
Impeller Drg. No.	818G130PJ
Volute drg. No.	818G010PJ
Hydraulic Data	
Eye Area 190.6cm <sup>2</sup>	Throat Area 69.7cm <sup>2</sup>
Impeller width 18mm	No. of Vanes 6
Volute Construction - Double Volute	
Shaft : Gr-2F	



2950 RPM