

NOTE- PERFORMANCE AS PER ISO 9906 GRADE-2B

PERFORMANCE CURVE OF 2.5HFT9 @2950 R.P.M

2.5HFT9/X/900152

FISHER PUMP

HST RANGE

MODEL 2.5HFT9

WORKING PRESS. 17 bar

SIZE 80x65-230

TEST PRESS. 25.5 bar

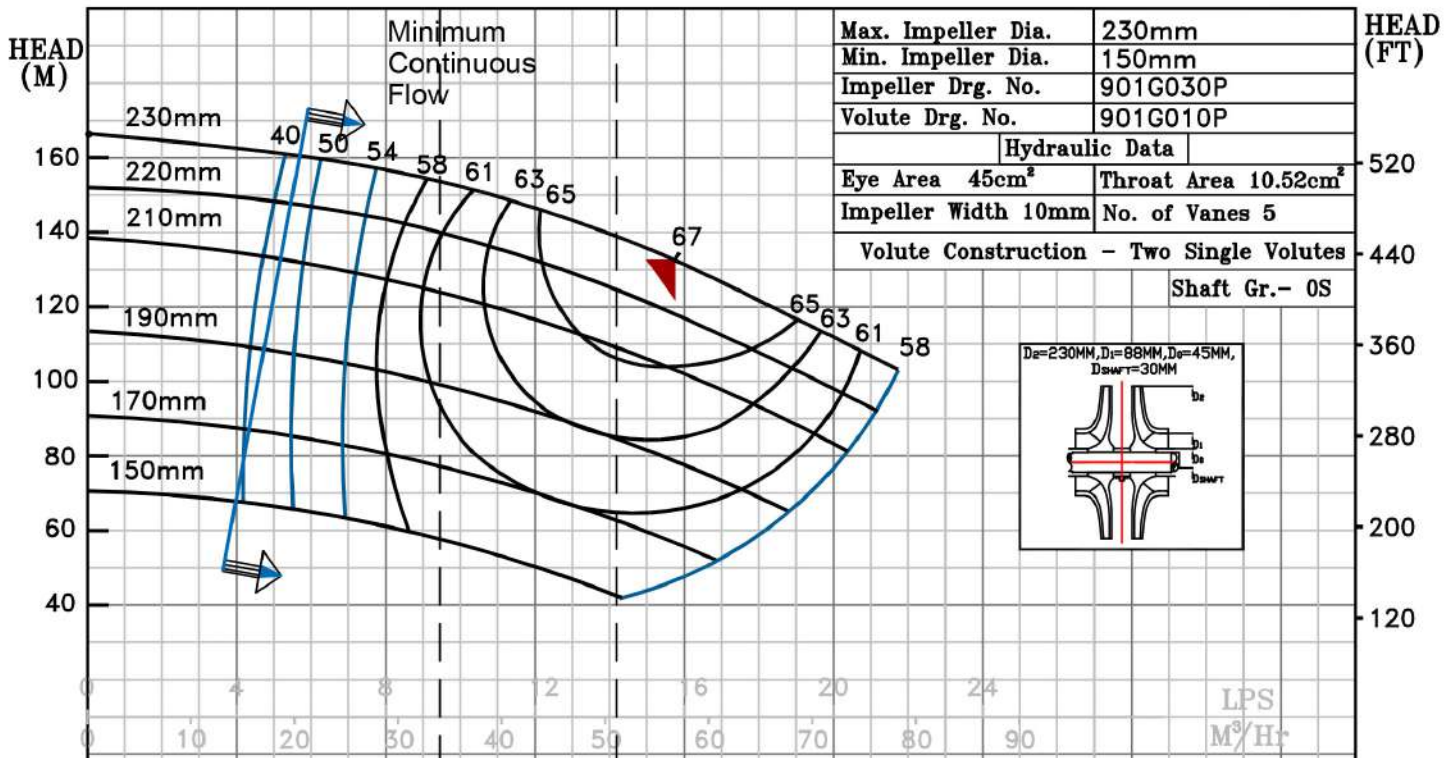
TYPE-AXIALLY SPLIT CASE TWO STAGE

SPEED 2950 rpm

RATED CAPACITY: 150 USGPM

DATE - 10.12.14

PUMP PERFORMANCE CHARACTERISTICS COMPUTED BASED ON CLEAN COLD WATER S.G 1.0

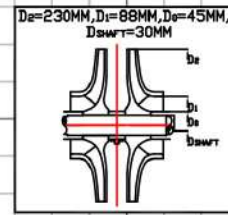


Max. Impeller Dia.	230mm
Min. Impeller Dia.	150mm
Impeller Drg. No.	901G030P
Volute Drg. No.	901G010P

Hydraulic Data	
Eye Area 45cm²	Throat Area 10.52cm²
Impeller Width 10mm	No. of Vanes 5

Volute Construction - Two Single Volutes

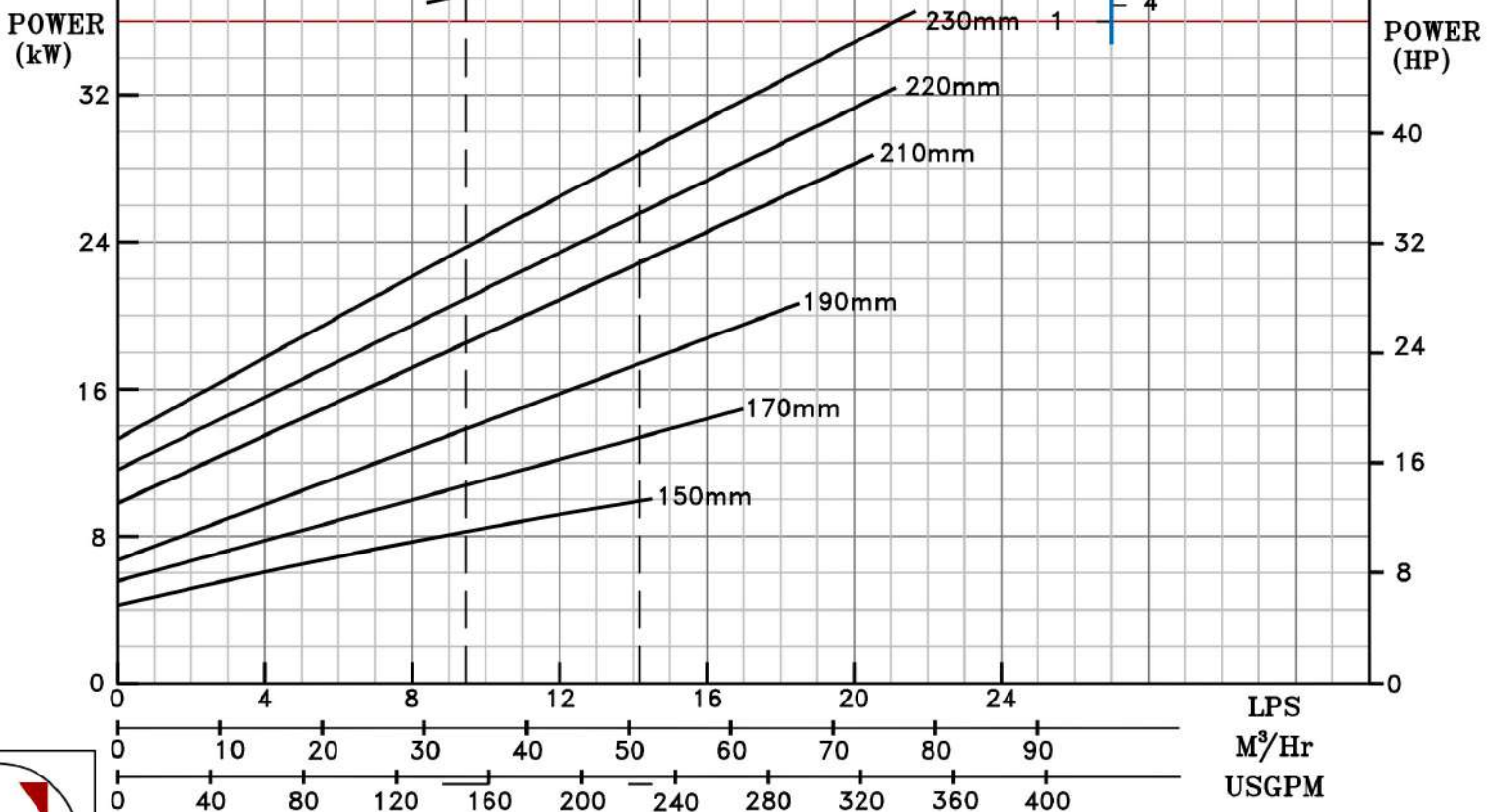
Shaft Gr.- 0S



B.E.P Flow	56.88 M³/Hr.
B.E.P Head	132 M
Speed	2950 R.P.M
Ns : 818 US UNITS	

NPSHr
(M) (FT)

3	10
2	6
1	4



LPS
M³/Hr
USGPM

2950 RPM

