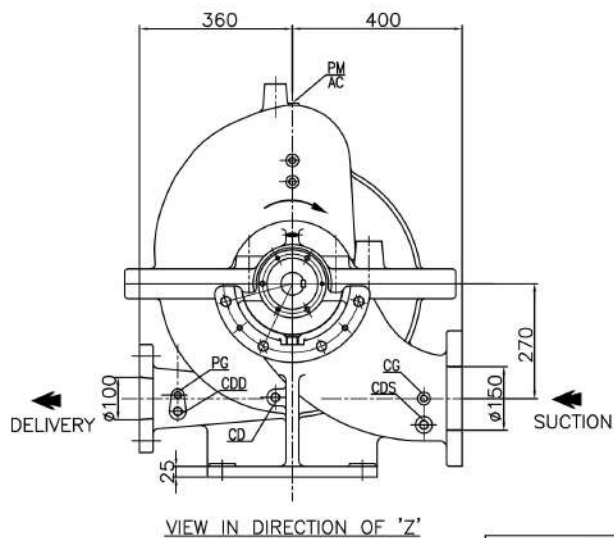
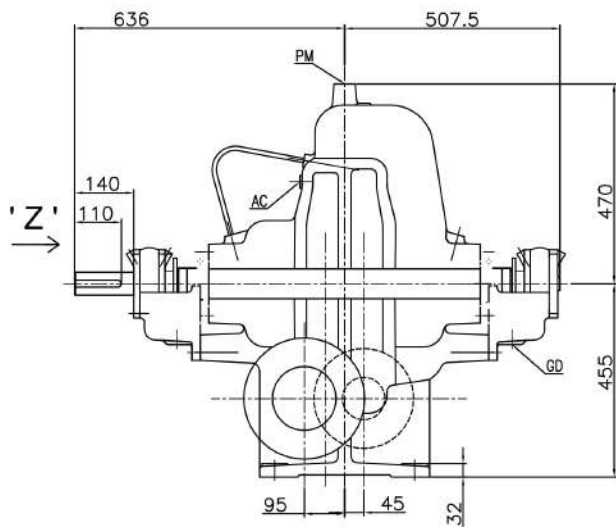
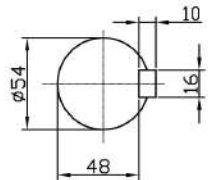


PUMP MODEL- 4HFT19

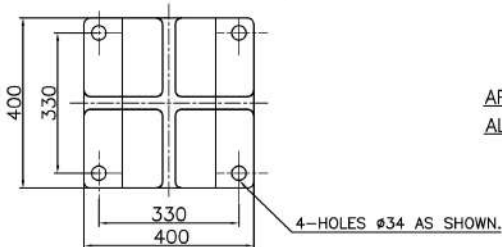
GENERAL ARRANGEMENT DRAWING FOR TWO STAGE AXIALLY SPLIT-CASE PUMP MODEL - 4HFT19



CLOCK WISE ROTATION
LOOKING FROM DRIVE END



SCALE-4:1
SHAFT DETAIL AT
COUPLING END



DETAIL OF PUMP FEET

APPROX. NETT WEIGHT - 725kg.
ALL DIMENSIONS ARE IN MM.

CONNECTIONS		
ITEM	DESCRIPTION	SIZE(NPT)
GD	GLAND DRAIN	3/4"
CG	COMPOUND GAUGE FOR SUCTION	3/8"
PG	PRESSURE GAUGE FOR DELIVERY	3/8"
AC	AIR COCK	3/8"
PM	PRIMING	1/2"
CDS	CASING DRAIN(SUCTION SIDE)	1/2"
CDD	CASING DRAIN(DELIVERY SIDE)	1/2"

S	PN 18	285	240	22	8, ø22								
D	PN 18					220	180	20	8, ø18				
REF. NO.	TYPE OF FLANGE	O.D.	P.C.D.	THK MIN	NO. SIZE OFF HOLE	RF	ØRF. THK RF FLANGE	O.D.	P.C.D.	THK MIN	NO. SIZE OFF HOLE	RF	ØRF. THK RF FLANGE
		SUCTION - ø150				DELIVERY - ø100							

PROJECT NAME-				JOB NO.-			
FISHER PUMP							
TITLE							
GA DRG. FOR 4HFT19(CW)							
DRN AS 12.04.13				DRG. NO.			
CHKD AS 12.04.13				PSF/4HFT19/GA-01			
APPD HS 12.04.13							
REV	DESCRIPTION			DRN	CHKD	APPD	SCALE
							1:1
							REV
							0