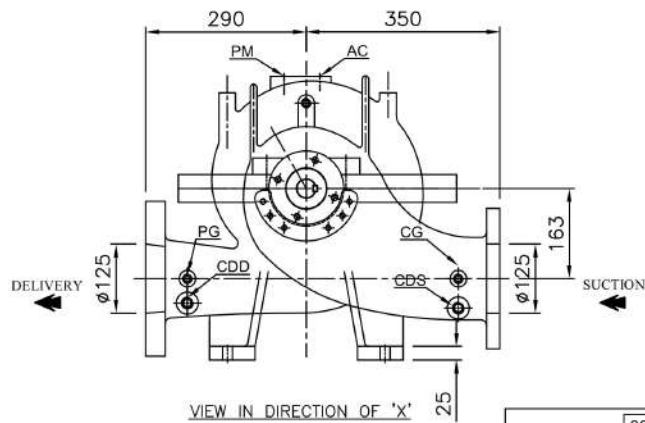
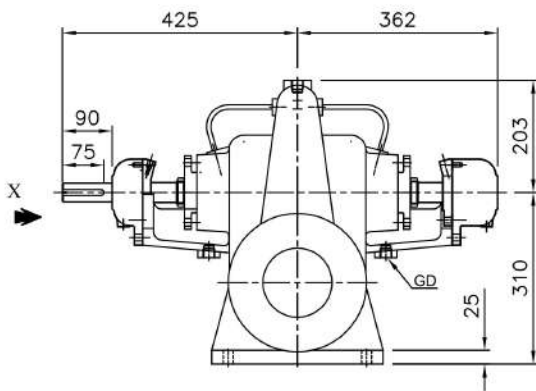
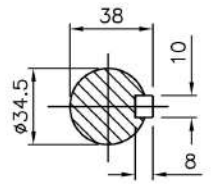


PUMP MODEL - 5HF10

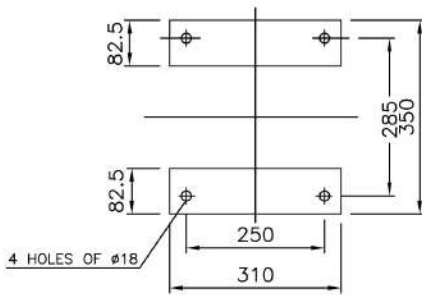
GENERAL ARRANGEMENT DRAWING FOR SINGLE STAGE AXIALLY SPLIT CASE PUMP MODEL - 5HF10



CLOCK-WISE ROTATION  
LOOKING FROM DRIVE END



SCALE - 4:1  
SHAFT DETAIL AT  
COUPLING END



PLAN OF PUMP FEET

ALL DIMENSIONS ARE IN MM.  
APPROX. NETT WEIGHT - 205kg.

| CONNECTIONS |                          |            |
|-------------|--------------------------|------------|
| ITEM        | DESCRIPTION              | SIZE (NPT) |
| GD          | GLAND DRAIN              | 1/2"       |
| CG          | COMP. GAUGE FOR SUCTION  | 3/8"       |
| PG          | PR. GAUGE FOR DELIVERY   | 3/8"       |
| AC          | AIR COCK                 | 3/8"       |
| PM          | PRIMING                  | 1/2"       |
| CDS         | CASING DRAIN (SUCT.SIDE) | 1/2"       |
| CDD         | CASING DRAIN (DELY.SIDE) | 1/2"       |

NOTES:

1. AN ARROW MARK WILL BE ON THE TOP HALF OF THE CASING TO INDICATE THE DIRECTION OF ROTATION
2. COMPOUND GAUGE, DISCHARGE GAUGE, AIR RELEASE VALVE, CIRCULATION RELIEF VALVE (FOR MOTOR ONLY) WILL BE SUPPLIED WITH UL LISTED PUMP

FLANGE TABLE

| S        | ANSI 125#FF    | 10"  | 8-1/2" | 15/16"            | 8, #7/8"         |    |                   |                    |        |          |                  |    |                   |  |  |
|----------|----------------|------|--------|-------------------|------------------|----|-------------------|--------------------|--------|----------|------------------|----|-------------------|--|--|
| D        | ANSI 250#FF    |      |        |                   |                  |    | 11"               | 9-1/4"             | 1-3/8" | 8, #7/8" |                  |    |                   |  |  |
| REF. NO. | TYPE OF FLANGE | O.D. | P.C.D. | THK MIN           | NO. SIZE OF HOLE | RF | ØRF.THK RF FLANGE | O.D.               | P.C.D. | THK MIN  | NO. SIZE OF HOLE | RF | ØRF.THK RF FLANGE |  |  |
|          |                |      |        | SUCTION - 125(5") |                  |    |                   | DELIVERY - 125(5") |        |          |                  |    |                   |  |  |

| FISHER PUMP          |             |          |           |      |    |          |  |  |  |              |     |
|----------------------|-------------|----------|-----------|------|----|----------|--|--|--|--------------|-----|
| TITLE-               |             |          |           |      |    |          |  |  |  |              |     |
| GA DRAWING FOR 5HF10 |             |          |           |      |    |          |  |  |  |              |     |
| DRN                  | SN          | 03.02.23 | DRG. NO.  |      |    |          |  |  |  | SCALE<br>1:1 |     |
| CHKD                 | TK          | 03.02.23 | 836GA10YJ |      |    |          |  |  |  |              |     |
| APPD                 | HS          | 03.02.23 |           |      |    |          |  |  |  |              |     |
| REV                  | DESCRIPTION | DRN      | CHKD      | APPD | HS | 03.02.23 |  |  |  |              | REV |
|                      |             |          |           |      |    |          |  |  |  |              | 0   |