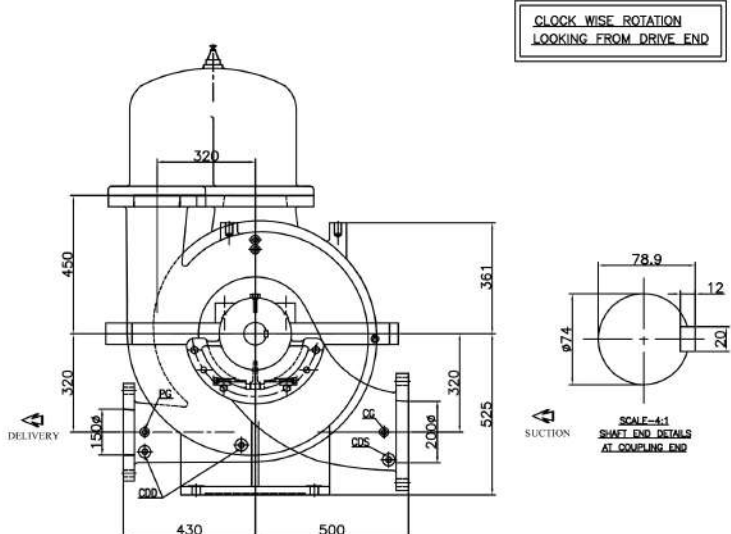
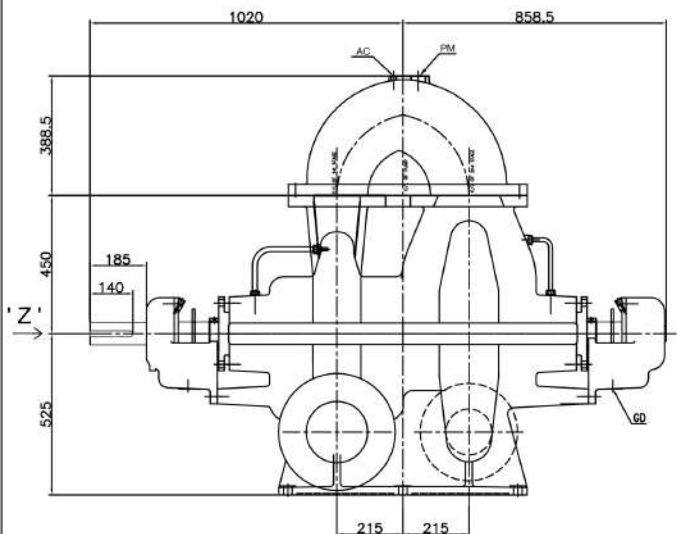
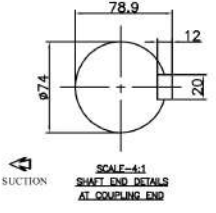


PUMP MODEL - 6HFTD21

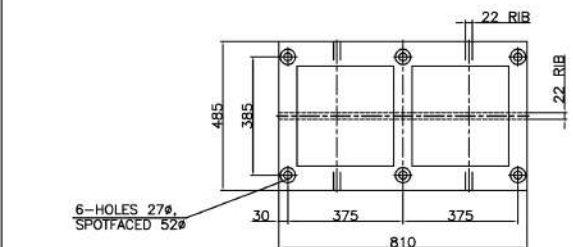
GENERAL ARRANGEMENT DRAWING FOR TWO STAGE AXIALLY SPLIT-CASE PUMP MODEL - 6HFTD21



CLOCK WISE ROTATION
LOOKING FROM DRIVE END



VIEW IN DIRECTION OF 'Z'



PUMP FOOT PRINT

APPROX. NETT WEIGHT - 1220kg.
ALL DIMENSIONS ARE IN MM.

CONNECTIONS		
ITEM	DESCRIPTION	SIZE(NPT)
GD	GLAND DRAIN	1"
CG	COMPOUND GAUGE FOR SUCTION	3/8"
PG	PRESSURE GAUGE FOR DELIVERY	3/8"
AC	AIR COCK	3/8"
PM	PRIMING	1"
CDS	CASING DRAIN(SUCTION SIDE)	1/2"
CDD	CASING DRAIN(DELIVERY SIDE)	1/2"

REF. NO.	TYPE OF FLANGE	O.D.	P.C.D.	THK MIN	NO. SIZE OF HOLE	RF	DRF. THK RF FLANGE	O.D.	P.C.D.	THK MIN	NO. SIZE OF HOLE	RF	DRF. THK RF FLANGE
S	ANSI#250	15"	13"	1-5/8"	12, ø1"								
D	ANSI#250							12-1/2"	10-5/8"	1-7/16"	12, ø7/8"		
				SUCTION - ø200				DELIVERY - ø150					

PROJECT NAME-						JOB NO.-					
FISHER PUMP											
TITLE											
GA DRG. FOR 6HFTD21											
DRN	AD	04.04.17	DRG. NO.								
CHKD	TK	04.04.17	PS/6HFTD21/GA-01								
APPD	HS	04.04.17									
REV	DESCRIPTION	DRN	CHKD								

